

LEGEND

- CENOZOIC**
- PLEISTOCENE AND RECENT**
- 10 Gravel, sand, alluvium
- TERTIARY PALEOCENE OR EOCENE**
- 9 EUREKA SOUND FORMATION: sandstone, shale, arkose, coal
- ORDOVICIAN**
- LOWER ORDOVICIAN**
- 7 8 CORNWALLS FORMATION
- 8 Member B: limestone, dolomite, dolomitic limestone, intraformational conglomerate and breccia
- 7 Member A: gypsum, anhydrite, gypsiferous carbonate-rock and dolomitic limestone, intraformational breccia
- 6 Dolomitic limestone, limestone, intraformational breccia
- 5 CAPE CLAY FORMATION: dolomite
- PALAEZOIC**
- 4 CASS FIORD FORMATION: limestone, limy dolomite, dolomitic limestone, intraformational conglomerate and breccia, gypsum, argillaceous carbonate-rock
- CAMBRIAN AND CAMBRIAN ?**
- LOWER CAMBRIAN AND MIDDLE CAMBRIAN**
- 3 Not differentiated: CAPE LEPER FORMATION: dolomite, CAPE INGERSOLL FORMATION: dolomite, POLICE POST FORMATION: limestone, sandy limestone, CAPE KENT FORMATION: dolomite, dolomitic limestone, CAPE WOOD FORMATION: dolomite, limestone, sandstone, 3a. Sverdrup Member Formation: sandstone
- CAMBRIAN ?**
- 2 (Includes Camperdown and Bache Peninsula Members of the Rensselaer Bay Formation; the uppermost, or Sverdrup Member is 3a above.) Bache Peninsula Member: arkose, conglomerate, Camperdown Member: sandstone, shale, dolomite
- PRECAMBRIAN**
- 1 Gneiss, granite, pegmatite, crystalline limestone

Geological reference numbers underlined indicate that geology is inferred

Bedding (horizontal, inclined, g-dip gentle) + /

Fault assumed, in part from lineaments; solid circle indicates downthrow side

Coast

Microfossil locality; Pollen, spores

Marine shells debris above inferred local limit of post-glacial marine submergence

Measured section or fossil locality described in text

Measured section

Geology by R. L. Christie, 1961

To accompany G.S.C. Memoir 347 by R. L. Christie

Geological Cartography by the Geological Survey of Canada, 1965

Glacier

Historic sites

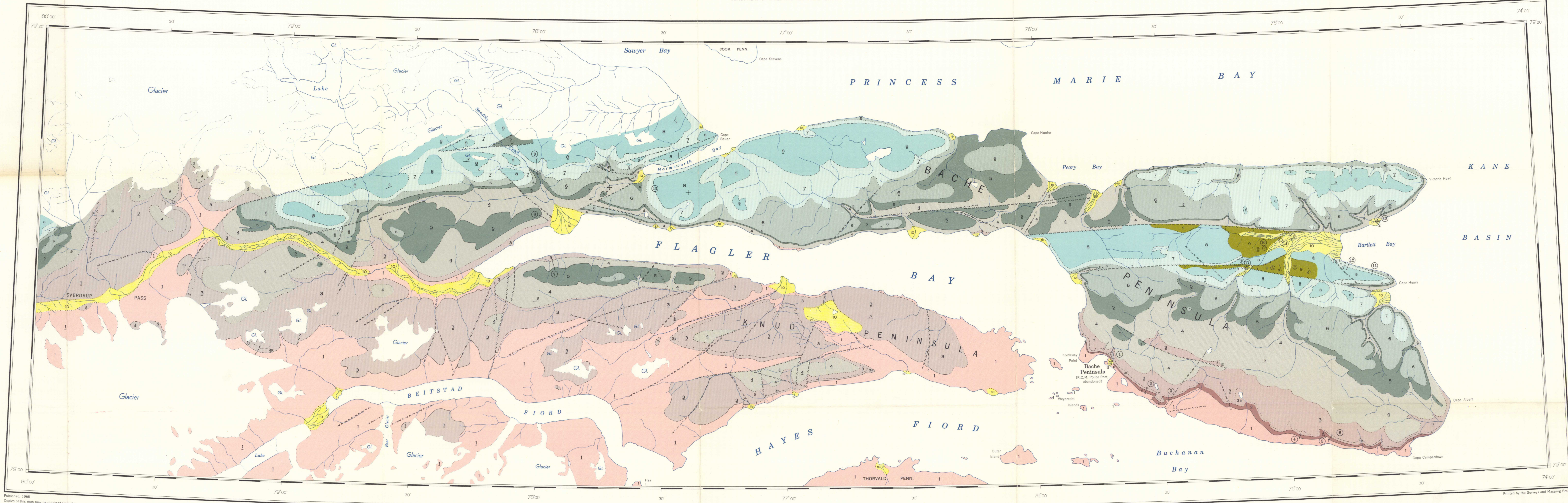
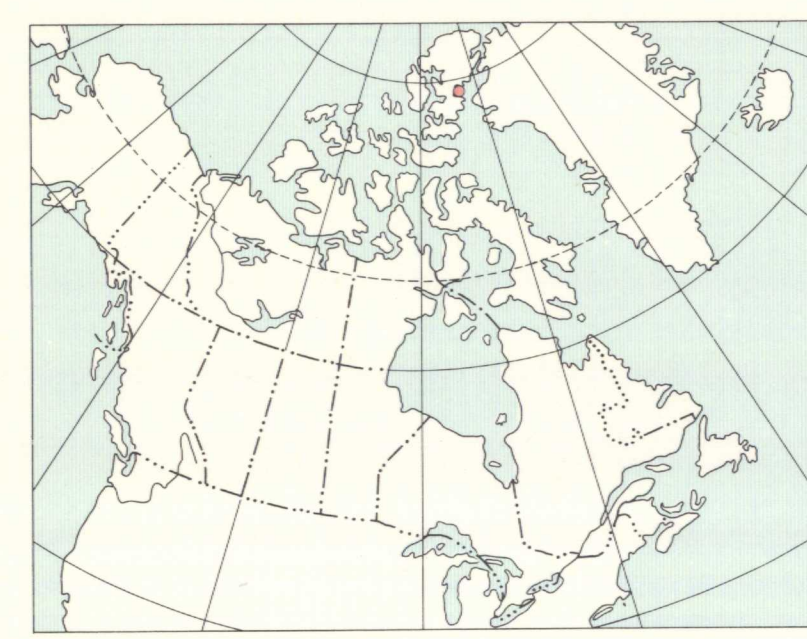
1 Peary, 1898, cairn

2 Peary, 1905, coal depot

3 R.C.M. Police, site of Bache Peninsula Police Post

Base-map cartography by the Geological Survey of Canada, 1964 from maps compiled by the Surveys and Mapping Branch

Approximate magnetic declination 88° 35' West decreasing 21' annually

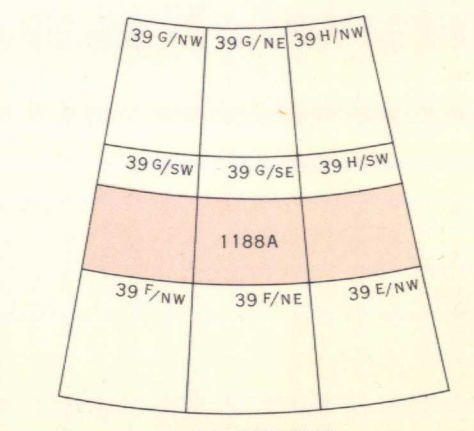


MAP 1188A
GEOLOGY
BACHE PENINSULA
ELLESMERE ISLAND
DISTRICT OF FRANKLIN

Scale 1:126,720
1 inch to 2 miles

Miles 2 0 2 4 6 Miles
Kilometres 3 0 3 6 9 Kilometres

NOT TO BE TAKEN FROM LIBRARY
NE PAS SORTIR DE LA BIBLIOTHÈQUE



1188A