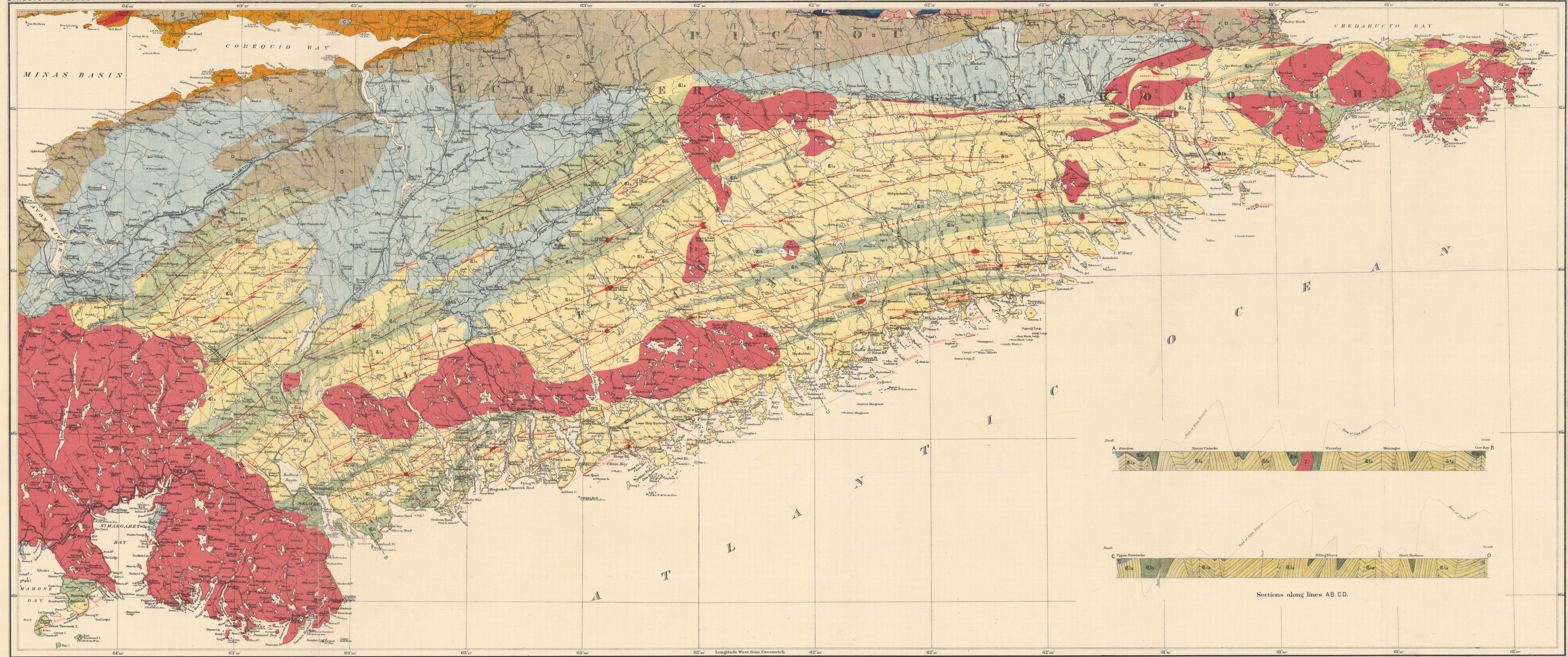


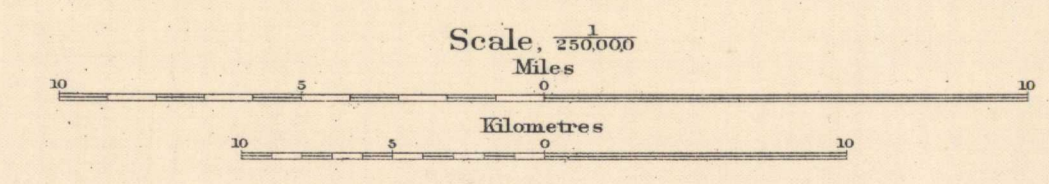
STRUCTURAL GEOLOGY NOVA SCOTIA

- LEGEND**
- Sedimentary rocks**
- TRIASIC ■ Sandstone
  - LOWER CARBONIFEROUS ■ Conglomerate, sandstone, shale, limestone and gypsum
  - DEVONIAN ■ Conglomerate, sandstone and shale
  - SILURIAN ■ Sandstone, shale and limestone
  - ORDOVICIAN ■ Sandstone and shale
  - CAMBRIAN ■ Halifax formation, slate
  - PRE-CAMBRIAN ■ Goldboro formation, quartzite and slate
- Igneous rocks**
- TRIASIC ■ Basalts, dykes
  - DEVONIAN ■ Granite, diorite, gabbro, etc.
- Symbols**
- Geological boundary
  - Fault
  - Anticline
  - Anticline definitely located
  - Anticline not definitely located
  - Syncline
  - Syncline definitely located
  - Syncline not definitely located
  - Dome
  - Coloured part surface
  - Plunging anticline
  - Cliff with horizontal
  - Ancient shore
  - Antimony
  - W
  - Wagon



C.O. Russell, Designer and Chief Draftsman  
 A. Robinson and A. G. J. Smith, Draftsmen

MAP 53A  
**SOUTHEAST NOVA SCOTIA**



Note: For practical purposes assume  
 4 MILES TO 1 INCH

GEOLOGY AND TOPOGRAPHY  
 HUBB FLETCHER 1882-1907  
 E. A. PARBULLY 1882-1907

Base map from the original plates of the  
 Department of the Interior

To accompany Memoir No. 20

NOT TO BE TAKEN FROM LIBRARY  
 NE PAS SORTIR DE LA BIBLIOTHEQUE

