

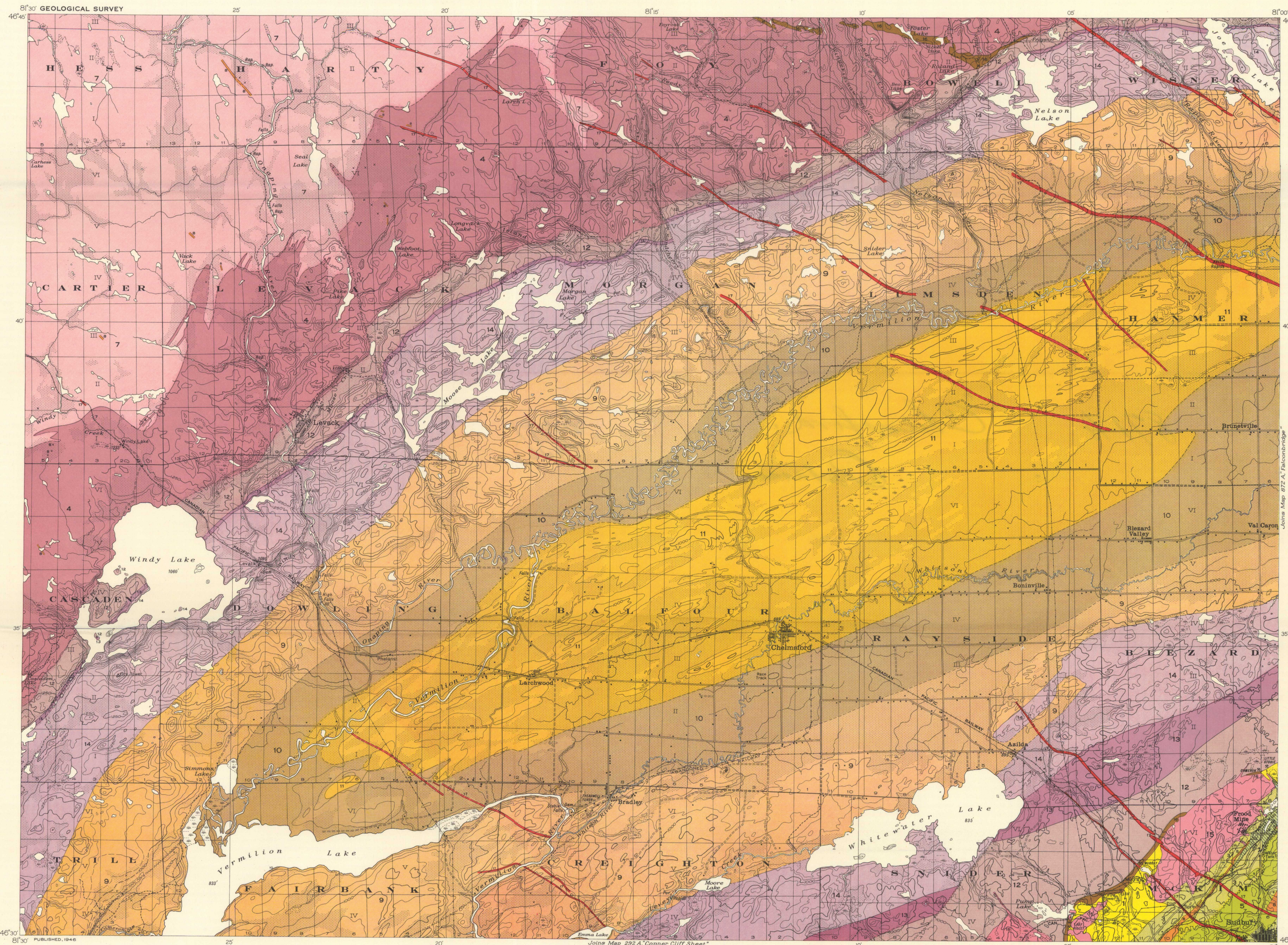
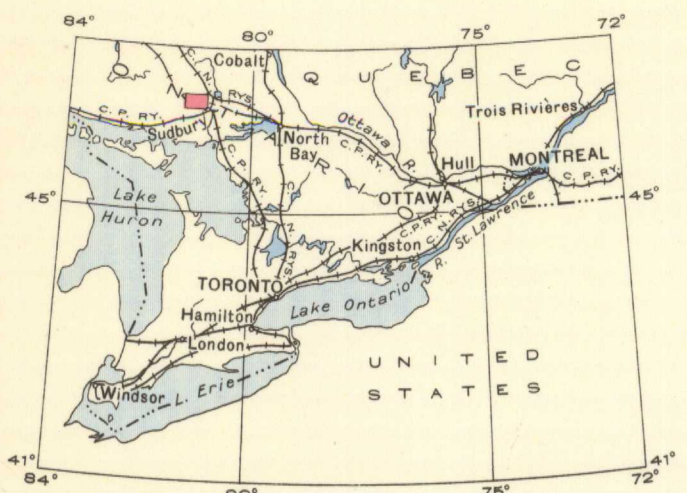
LEGEND

- KEWEENAWAN**  
POST-WHITEWATER
- Equigranular olivine diabase
  - 16 Quartz diorite
  - 15 Murray, Creighton, and similar granites
- NORITE IRRUPTIVE**
- 14 Micropegmatite
  - 13 Rocks transitional from norite (12) to micropegmatite (14)
  - 12 Norite
- WHITEWATER**
- 11 CHELMSFORD FORMATION: dark arkose
  - 10 ONWATIN FORMATION: slate
  - 9 ONAPING FORMATION: agglomerate and tuff; minor rhyolitic lavas
- HURONIAN**  
POST-COBALT
- Nipissing diabase; chiefly quartz gabbro
  - 7 Birch Lake granite
- BRUCE**
- 6 McKIM FORMATION: varved greywacke, impure quartzite, grit
  - 5 COPPER CLIFF FORMATION: rhyolite
- ARCHEAN**
- 4 Levack granite and granite-gneiss
  - 2 Metamorphosed argillite, greywacke, and impure quartzite
  - 1 Metamorphosed basic lavas
- 3 Undivided: 3a. Breccia

- Drift-covered area  
Small rock outcrop  
Fault  
Mine  
Mine shaft  
Road and buildings  
Road not well travelled  
Road along township boundary  
Bush road, trail, portage  
Power line  
Power line along road  
Power line along railway  
Church  
School  
Post Office  
Triangulation station  
Township boundary  
Concession and lot numbers  
Stream (position approximate)  
Marsh  
Contours (interval 50 feet)  
Contours (position approximate)  
Depression contours  
Height in feet above mean sea-level

Geology by W. H. Collins and assistants, 1930-32, 1934, 1935.  
Boundaries of norite irruptive from plane-table surveys by The International Nickel Company of Canada, Limited, who also defined boundaries of transition zone (13) in southeast quarter of map-area.  
Area of Birch Lake granite (7) from traverses by D. R. E. Whitmore, 1939.  
Geological compilation by H. C. Cooke, 1941.

Base-map compiled by the Topographical Survey, 1945, from surveys made in 1930 and 1931 with air photographs taken by the Royal Canadian Air Force in 1928, and information obtained from published Federal Government maps.  
Cartography by the Drafting and Reproducing Division, 1946.



MAP 871A  
**CHELMSFORD**  
SUDBURY DISTRICT  
ONTARIO  
Scale, 63,360 or 1 inch to 1 mile  
Approximate magnetic declination, 9° West.

NOT TO BE TAKEN FROM LIBRARY  
NE PAS SORTIR DE LA BIBLIOTHEQUE

NOT TO BE TAKEN FROM LIBRARY  
NE PAS SORTIR DE LA BIBLIOTHEQUE