

LEGEND

- PLEISTOCENE AND RECENT**
9 Undifferentiated alluvial and deltaic sand, marine beach deposits; cobbles and boulders; may include Tertiary deposits
- CRETACEOUS (?) AND TERTIARY**
UPPER CRETACEOUS (?) AND TERTIARY
8 EUREKA SOUND FORMATION: sandstone, siltstone; interbedded silty shale and conglomerate; includes undifferentiated clay and silty sands with partly carbonized wood, and lignite; non-marine (200+)
- CRETACEOUS**
UPPER CRETACEOUS
7 KANGLUK FORMATION: dark grey shale; some siltstone, sandstone, and sand; marine (650)
- LOWER OR UPPER CRETACEOUS**
6 HASSEL FORMATION: sandstone, siltstone, shale; some coal; non-marine (1800+)
- LOWER CRETACEOUS**
5a CHRISTOPHER FORMATION: grey to black shale; minor siltstone and limestone; marine (1540)
5b ISACHSEN FORMATION: sandstone, sand, grey shale, siltstone; some coal; local agglomerate; mainly non-marine (3250)
- JURASSIC (?) AND CRETACEOUS**
UPPER JURASSIC (?) AND LOWER CRETACEOUS
4 DEER BAY FORMATION: black shale; minor siltstone and sandstone; marine (500+)
- JURASSIC**
3b AWINGAK FORMATION: (Upper Jurassic) grey sand, sandy shale; minor coal, conglomerate, and dolomite; non-marine (1500+)
3a JAEGER FORMATION: varicoloured sandstone, pebbly sandstone, sand; marine (1000)
- TRIASSIC AND (?) JURASSIC**
UPPER TRIASSIC AND (?) LOWER JURASSIC
2 HEIBERG FORMATION: sand, sandstone, mudstone; some coal; mainly non-marine (2000+)
- PENNSYLVANIAN AND/OR PERMIAN**
1 Gypsum, minor limestones; includes blocks of lava flows; some included gabbro may be of Cretaceous age

Gabbro: youngest country rocks intruded belong to unit 6 (most occurrences not shown); a substantial part of the exposures were mapped with other formations

Figures in parentheses are approximate thicknesses of formations in feet
Bedding (horizontal, inclined, vertical, overturned)
Bedding trend with indicated direction of dip
Fault, inclined (defined, approximate)
Anticline (approximate, arrow indicates direction of plunge)
Syncline (approximate, arrow indicates direction of plunge)

Geology by R. G. Blackadar, Y. O. Fortier, B. F. Glenister, H. R. Greiner, D. J. McLennan, A. W. Norris, E. F. Ross, and R. Thomsen, 1955; area of Isachsen to Isachsen Dome by W. W. Heywood, 1952, 1953

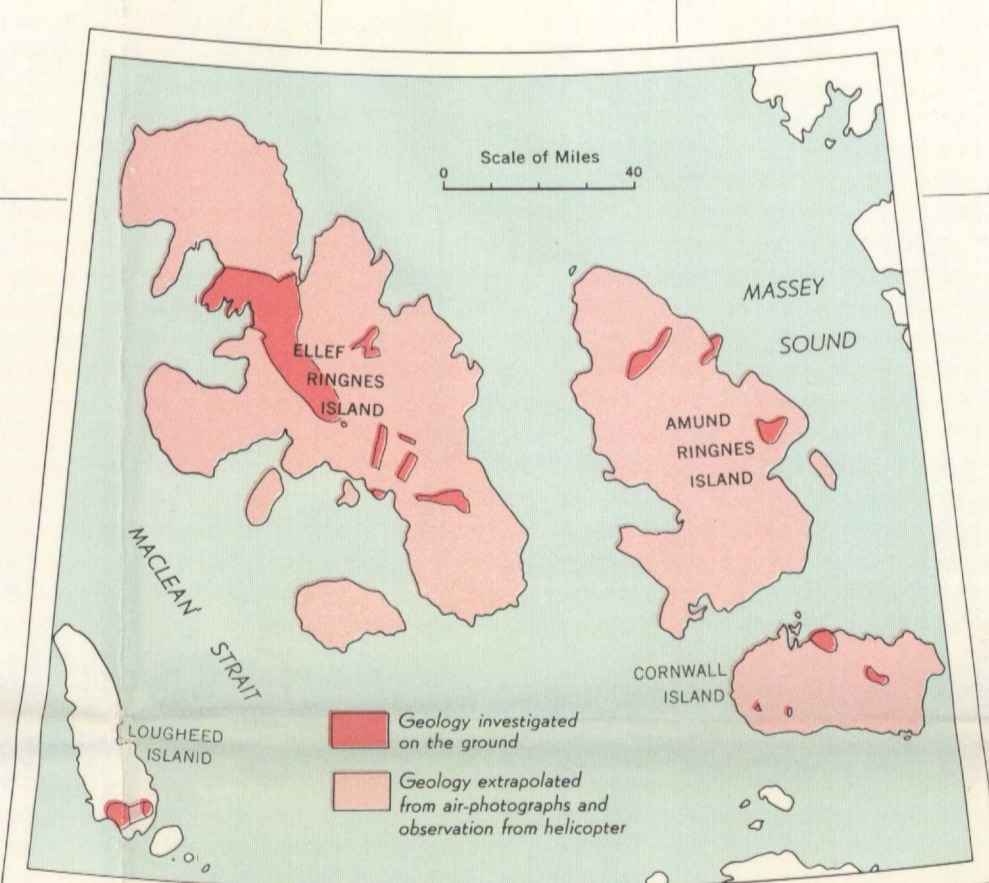
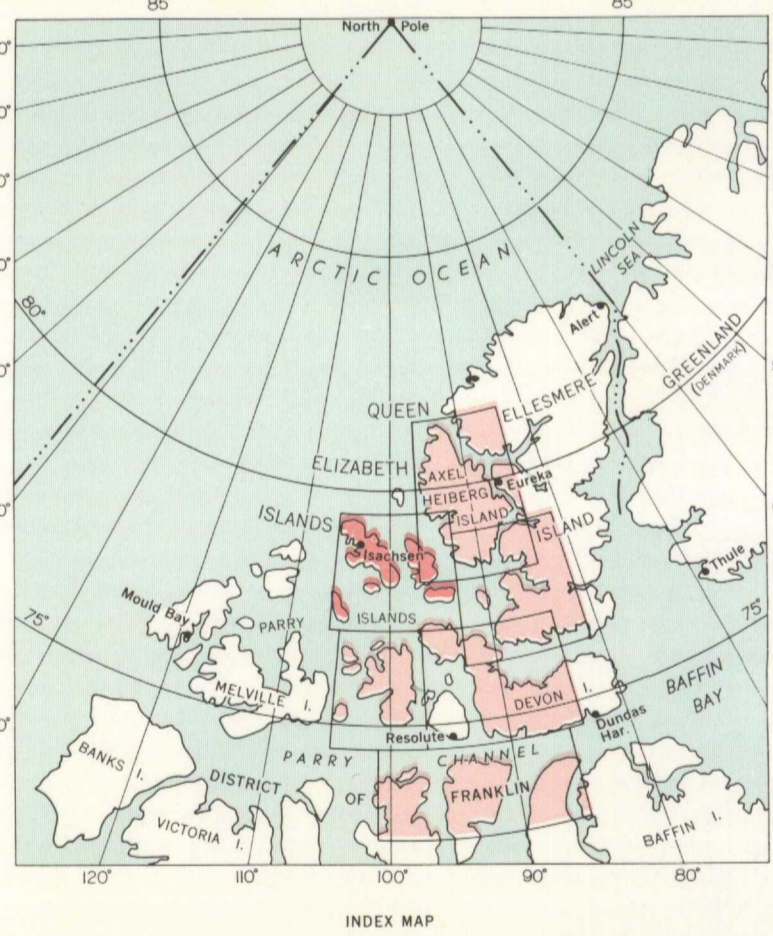
Compiled by Y. O. Fortier

To accompany G.S.C. Memoir 320 by Y. O. Fortier et al.

Braded stream
Gravel, sand or mud
Height in feet above mean sea-level (approximate) 1250

Cartography by the Geological Survey of Canada

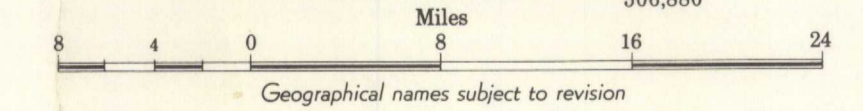
Air photographs covering this area may be obtained through the National Air Photographic Library, Topographical Survey, Ottawa, Ontario



ELLEF RINGNES, AMUND RINGNES, CORNWALL AND LOUGHEED ISLANDS

DISTRICT OF FRANKLIN
NORTHWEST TERRITORIES

Scale: One Inch to Eight Miles = 1/508,880 Miles



Geographical names subject to revision

NOT TO BE TAKEN FROM LIBRARY
NE PAS SORTIR DE LA BIBLIOTHÈQUE



1102A

1102A