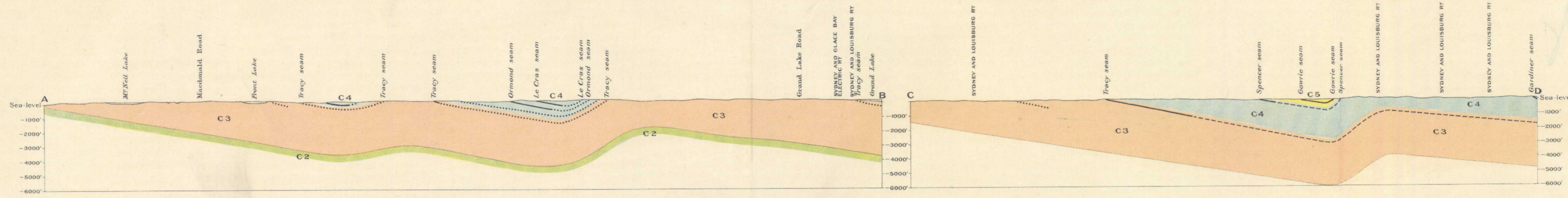


**Canada**  
**Department of Mines**  
 HON. CHARLES STEWART, MINISTER; CHARLES CAMSELL, DEPUTY MINISTER.  
**GEOLOGICAL SURVEY**  
 W.H. COLLINS, DIRECTOR.  
 Issued 1922



Structural sections along lines A B and C D  
 Scale, horizontal and vertical, scales

**LEGEND**

**Symbols**

- Outcrop of coal seam
- Concealed coal seam (position approximate)
- Concealed coal horizon (position and extent problematical)
- Geological boundary (assumed)
- Fault
- Dip and strike
- Horizontal strata
- Rock outcrop (altitude not determined)
- Glacial striae
- Anticlinal axis
- Synclinal axis
- Bore hole
- Prospect pit

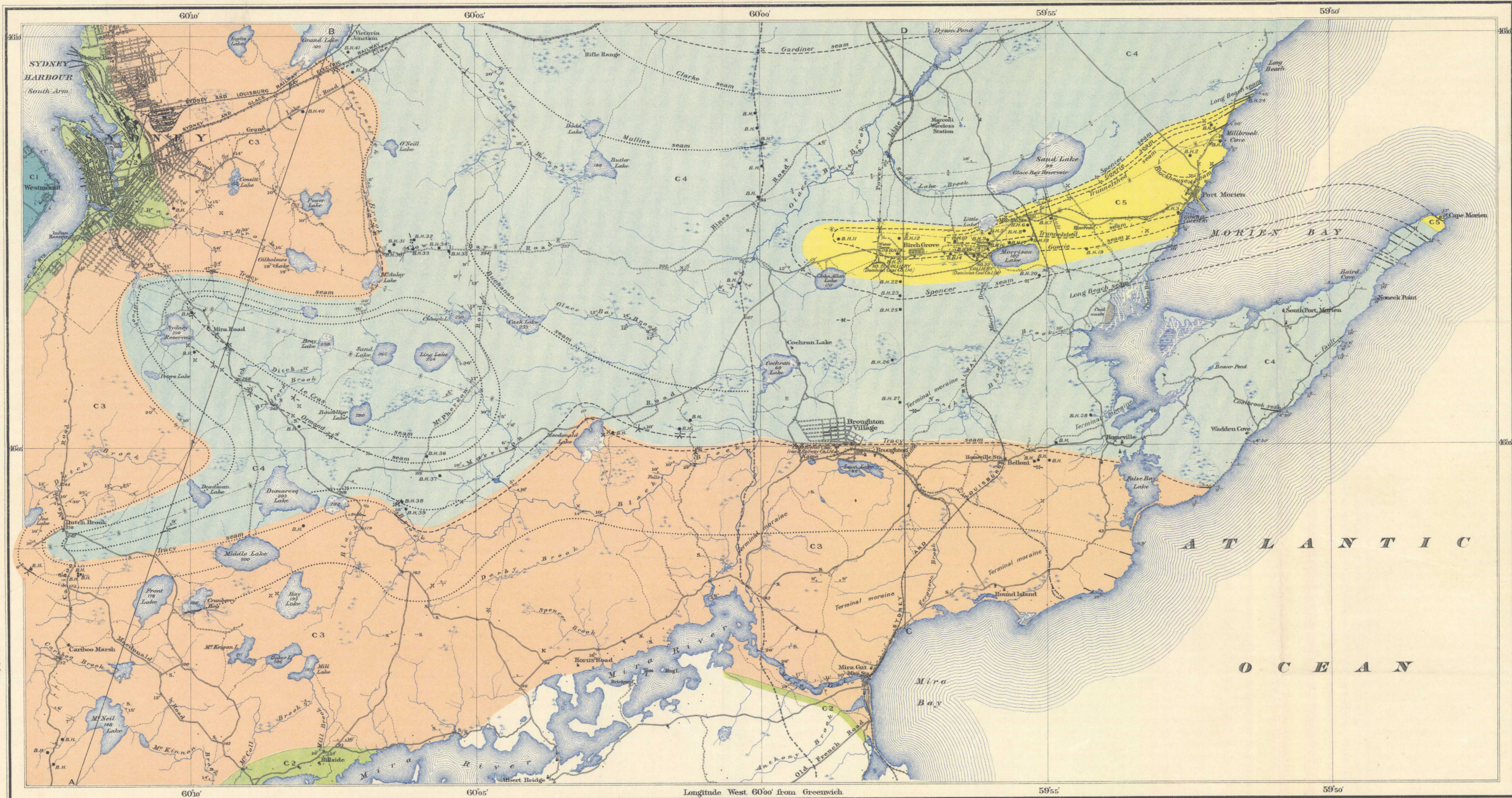
- C5**  
 Anthonomyia zone  
 (dominantly grey shale, sandstone, freshwater limestone, variable coal seams, intercalated red beds)
- C4**  
 Linopteris obliqua zone  
 (dominantly grey sandstone, shale, conglomerate, thin coal seams, intercalated red beds)
- C3**  
 Neotropis gigantea zone  
 (dominantly grey sandstone, shale, grit, conglomerate, shale, thin coal seams, intercalated red beds)
- C2**  
 Point Edward formation  
 (dominantly red sandstone, shale, marl, thin freshwater limestone)
- C1**  
 Windsor series  
 (marine, fossiliferous grey limestone, calcareous shale)

Note: All observed rock outcrops are indicated by the signs —, +, x, etc. These outcrops are too small to map to scale and, for the most part, natural rock exposures are limited to the sea cliffs or to the beds and banks of streams. Elsewhere the bedrock is covered with glacial or post-glacial deposits.

**LEGEND**

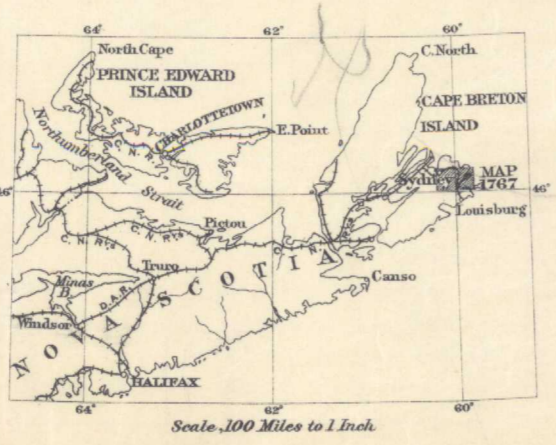
- Streets, roads and buildings
- Roads (not well travelled)
- Trails and paths
- Railways
- Railways (projected)
- Railways (abandoned)
- Mine tramways
- Power lines
- Bridges
- Churches
- Schools
- Post offices
- Cemeteries
- Slopes
- Wharves
- Dunes
- City boundaries
- Rivers and lakes
- Watercourses (with intermittent flow)
- Springs
- Marshes
- Salt marshes
- Tidal flats
- Figures (showing heights in feet above sea level)
- Sand

Geographical position based on the latitude and longitude of the astronomical station at Sydney, established in 1800 by the Department of the Interior. Approximate magnetic declination, 25° 20' West.

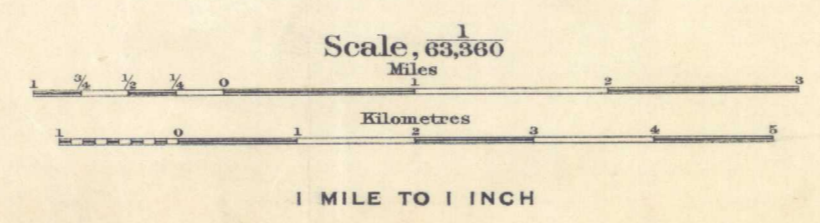


C.O. Savelle, Geographer and Chief Draughtsman.  
 J.O. Fortin and A.Y. Clark, Draughtsmen.

Publication No. 1767



**SYDNEY**  
 CAPE BRETON COUNTY  
 NOVA SCOTIA



**GEOLOGY**  
 Geology by A.O. Hayes, 1917-1919,  
 and W.A. Bell, 1921

**TOPOGRAPHY**  
 W.H. Boyd, Chief Topographical Engineer.  
 Surveys and Topography by D.A. Nichols, 1917,  
 and C.H. Freeman, 1918.

NOT TO BE TAKEN FROM LIBRARY  
 NE PAS SORTIR DE LA BIBLIOTHÈQUE

Sydney  
 To accompany Memoir by W.A. Bell  
 5-16  
 A. Geol.