

# Geological Survey of Canada

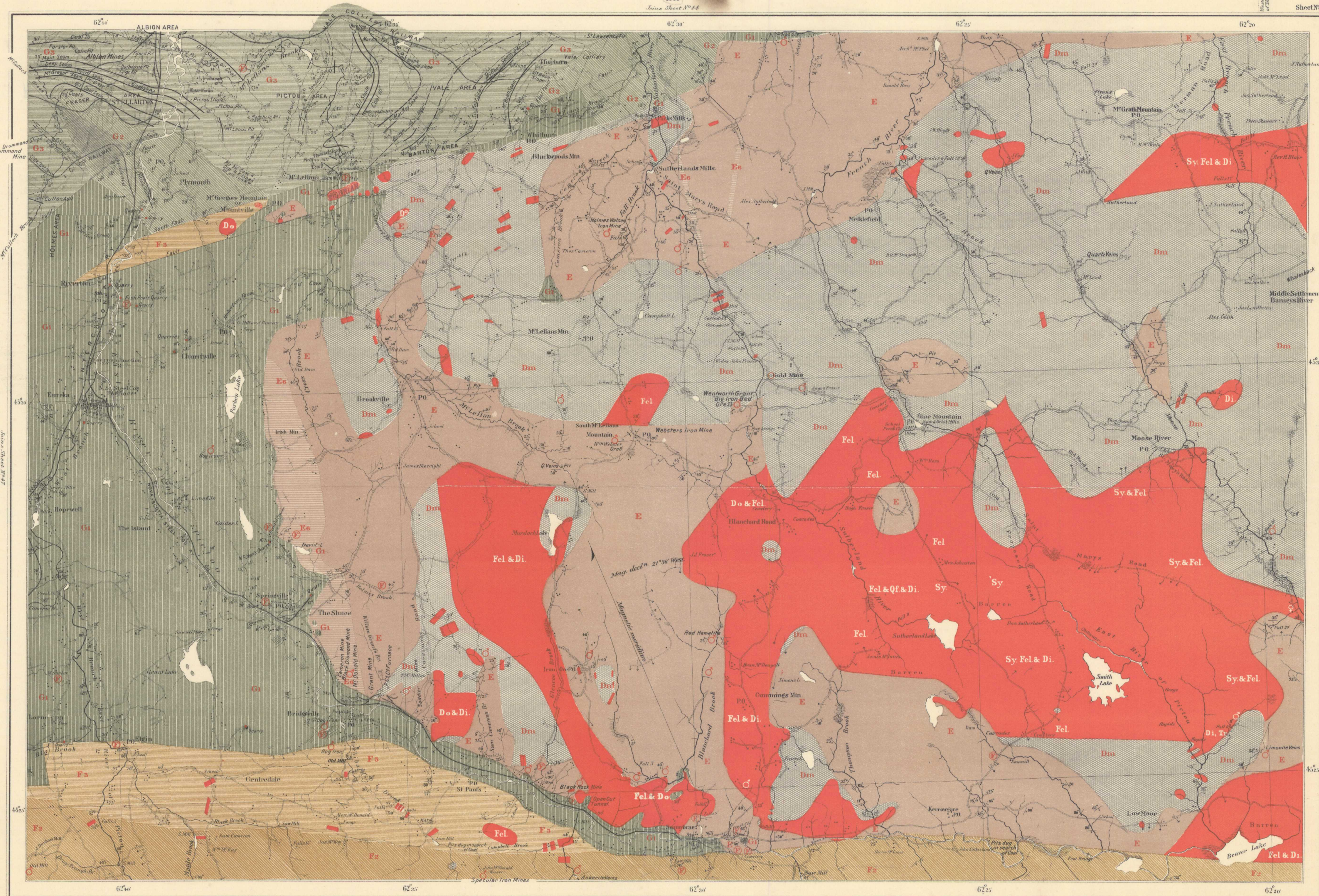
ROBERT BELL, D.Sc. LL.D. M.D., F.R.S. ACTING DIRECTOR

1902  
Series Sheet No. 44

Sheet No. 43

## Index to colours and signs

- Carboniferous**
- G<sub>3</sub> Coal Measures
  - G<sub>2</sub> Millstone Grit
  - G<sub>1</sub> Carboniferous Limestone
- Devonian**
- F<sub>3</sub> Upper
  - F<sub>2</sub> Middle
- Silurian**
- E<sub>6</sub> Lower Helderberg
  - E Silurian (not subdivided)
- Cambro-Silurian**
- Dm Metamorphic Cambro-Silurian
- Igneous**
- Fel, Q, f, Sy, Di, Tr. Felsite, Quartz felsite, Syenite, Diorite, Trap.
- Geological boundaries.**
- not traced.
  - Coal creeps.
  - doubtful
- 186'** Heights in feet above sea level.
- Roads.
  - Wood roads.
  - Faults.  $\odot$  borehole 1000'
  - $\wedge$  Dip and strike.  $\phi$  Glacial striae.
  - Vertical Strata. + Horizontal strata.
  - Limestone.  $\square$  Gypsum.
  - Gold.  $\circ$  Iron.  $\circ$  Copper.
  - Fossils.  $\square$  Quarry.  $\circ$  Mines.



Compiled and drawn by H. Fletcher from surveys by Sir W.E. Logan, E. Harley, H. Fletcher, E.R. Parkhill and J.A. Robert and from plans of railways and of coal and iron mines.

Series Sheet No. 42  
PROVINCE OF NOVA SCOTIA  
(Pictou County)  
(Stellarton Sheet, No. 43)  
Natural Scale 62,500  
Scale 1 mile to 1 inch

Geologically surveyed by H. Fletcher, Pictou coal field chiefly from Logan and Harley's map 1868-69 with additions by H.S. Poole, M.E. and J.G. Rutherford, M.E.  
**NOT TO BE TAKEN FROM LIBRARY**  
**NE PAS SORTIR DE LA BIBLIOTHÈQUE**  
No. 598  
Price 10¢