

Geological Survey of Canada

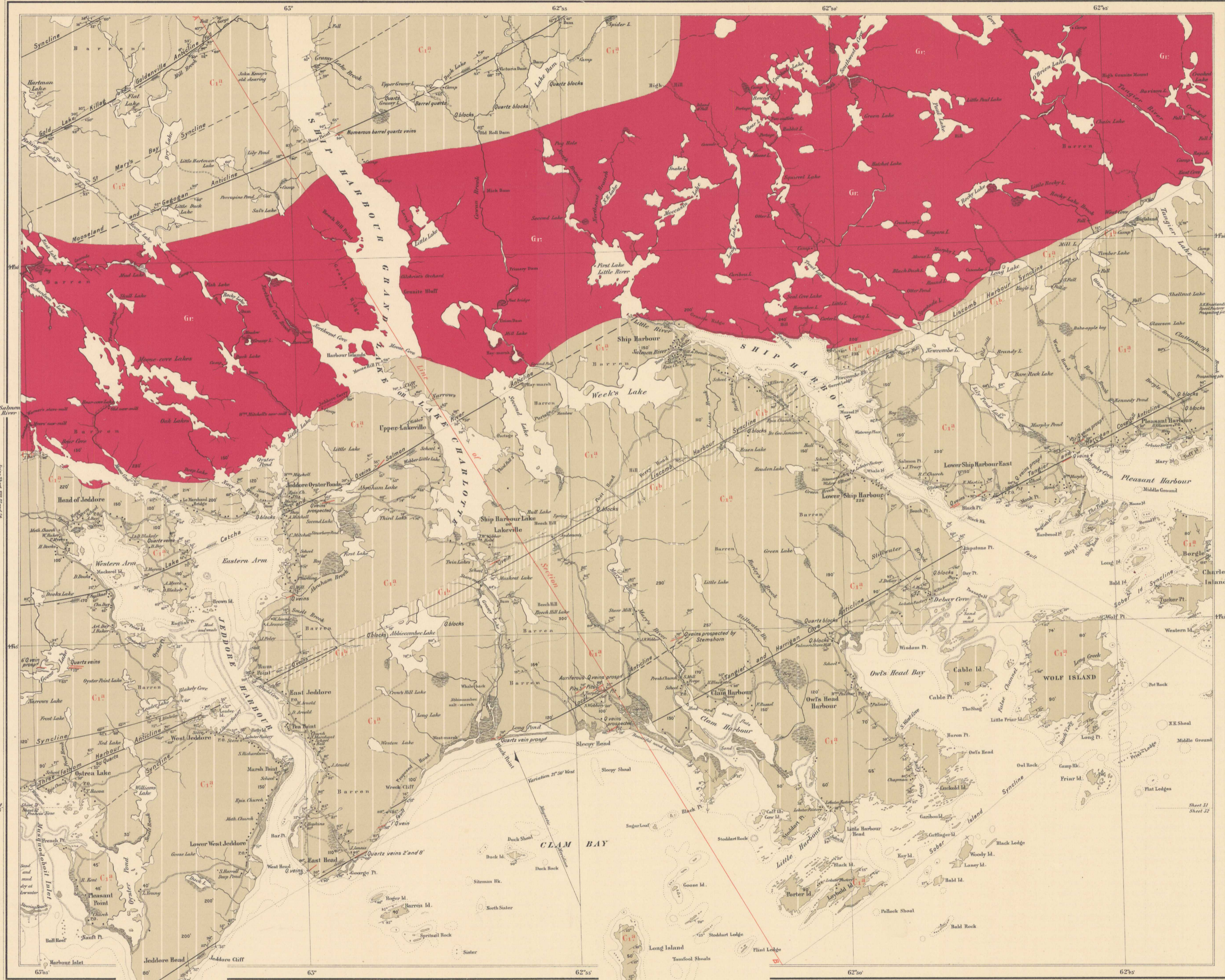
GEORGE M. DAWSON, C.M.G., I.L.D., F.R.S. DIRECTOR

1897

Series Sheet 51/52

Sheets

N° 51 (and 52)



Legend

Lower Cambrian

- Graphite and Ferruginous Slate Group
- Quartzite Group

Irruptive

- Granite

Geological boundaries

- Axis of Anticline not traced
- Axis of Syncline not traced
- Roads
- Wood Roads
- Dip of Anticlinal Axis
- Dip and Strike
- Vertical Strata
- Inclined Strata
- Cleavage
- Glacial Stria
- Quartz Veins
- Gold
- Mines

MAP LIBRARY / CARTOTHEQUE

Compiled and drawn from original surveys by E.R. Parrish. Coast line from Admiralty charts.

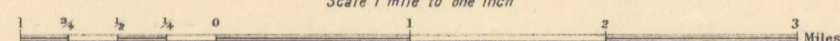
PROVINCE OF NOVA SCOTIA

Halifax County

(Ship Harbour Sheet)

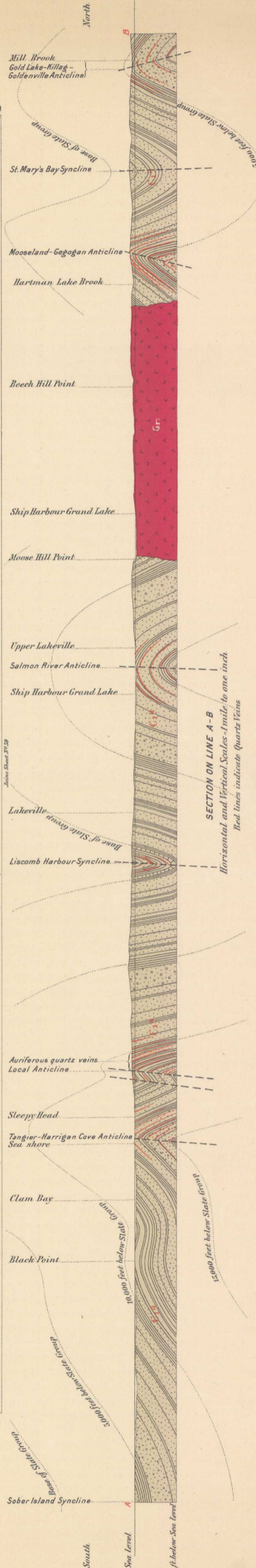
Natural Scale

Scale 1 mile to one inch



THE MONTRÉAL LITHOGRAPHING CO. LTD.

Geologically surveyed by E.R. Parrish



NOT TO BE TAKEN FROM LIBRARY / NE PAS SORTIR DE LA BIBLIOTHÈQUE