

Geological Survey of Canada

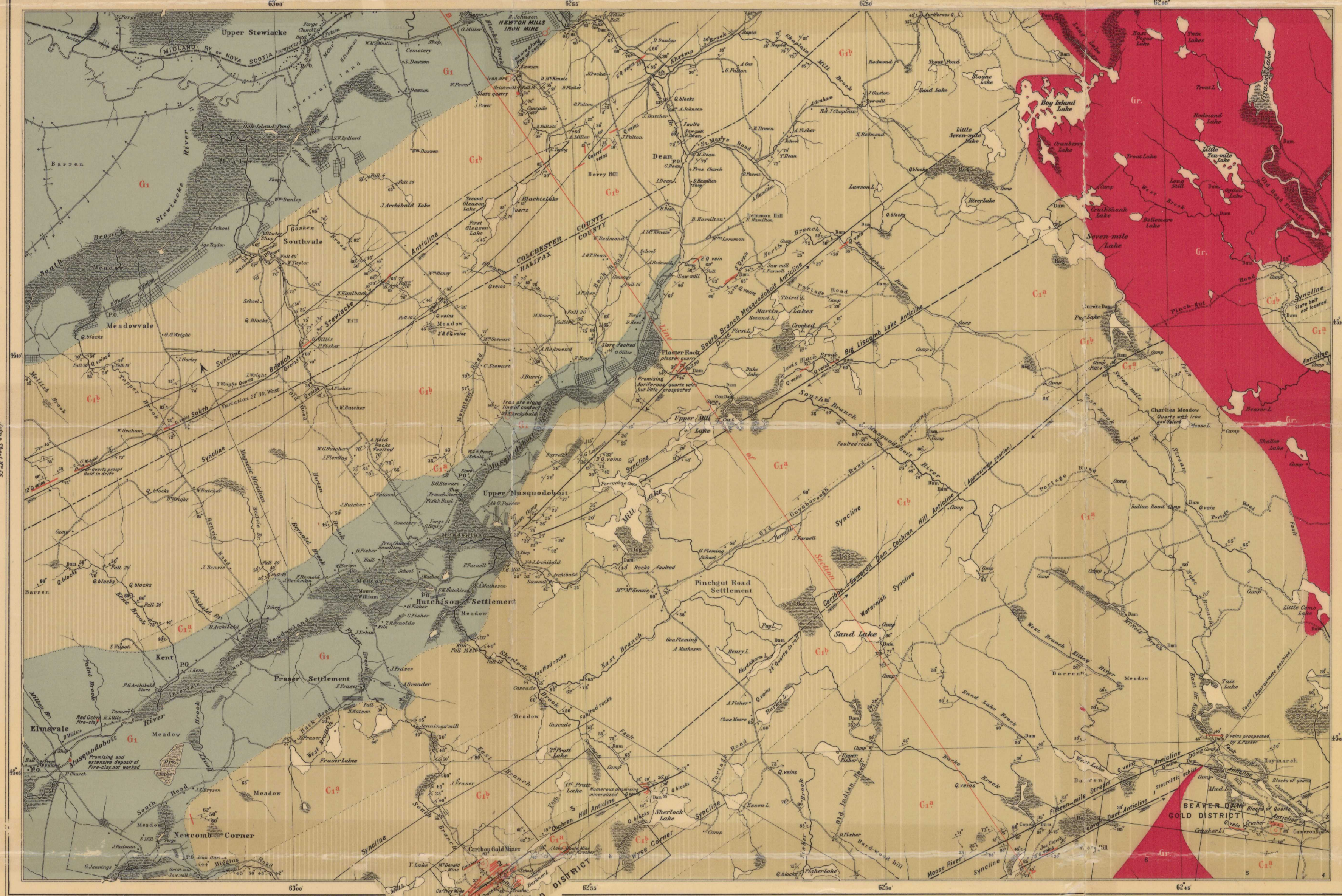
GEORGE M. DAWSON C.M.G. LL.D. F.R.S. DIRECTOR

1899
Joint Sheet No. 44

Sheet

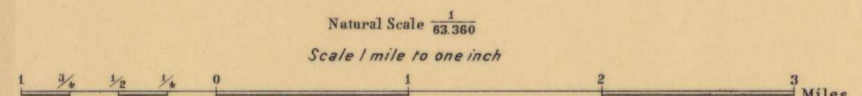
No. 49

- Legend**
- Carboniferous**
- G1 Carboniferous Limestone Series (Windsor-Series)
- Lower Cambrian**
- C1b Graphitic and Ferruginous Slate Group
 - C1a Quartzite Group
- Irruptive**
- Gr Granite
- Geological boundaries**
- not traced
 - Axis of Anticline
 - Axis of Syncline
 - Roads
 - Wood Roads
 - Dip of pay-streak
 - Dip of Axis of Anticline
 - Dip and Strike
 - Inverted Dips
 - Vertical Strata
 - Horizontal Strata
 - Cleavage
 - Glacial Stria
 - Gypsum
 - Limestone
 - Quartz Veins
 - Gold
 - Mines
 - Iron
 - Porphyry
 - 1, 2, Numbers of Blocks in Mining Areas



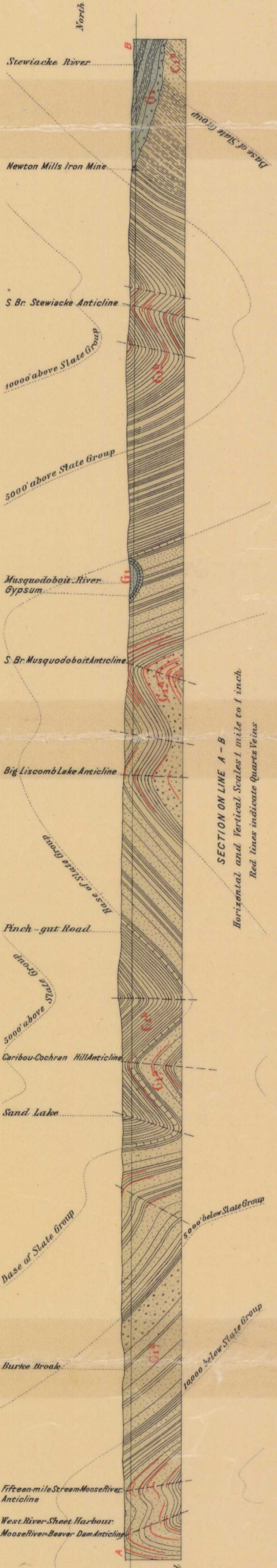
Compiled and drawn from original surveys by E.R. Parbault

Joint Sheet No. 50
MONTREAL LITHO. CO. LTD.
PROVINCE OF NOVA SCOTIA
Colchester and Halifax Counties
Upper Musquodoboit Sheet



Geologically surveyed by E.R. Parbault, B.A.Sc.

634



SECTION ON LINE A-B
Horizontal and Vertical Scales 1 mile on 1 inch
Red lines indicate Quartz Veins

Upper Musquodoboit

634