

5.1.6 Waverley, N.S.
 1909, Map no. 1025, Copy 2.

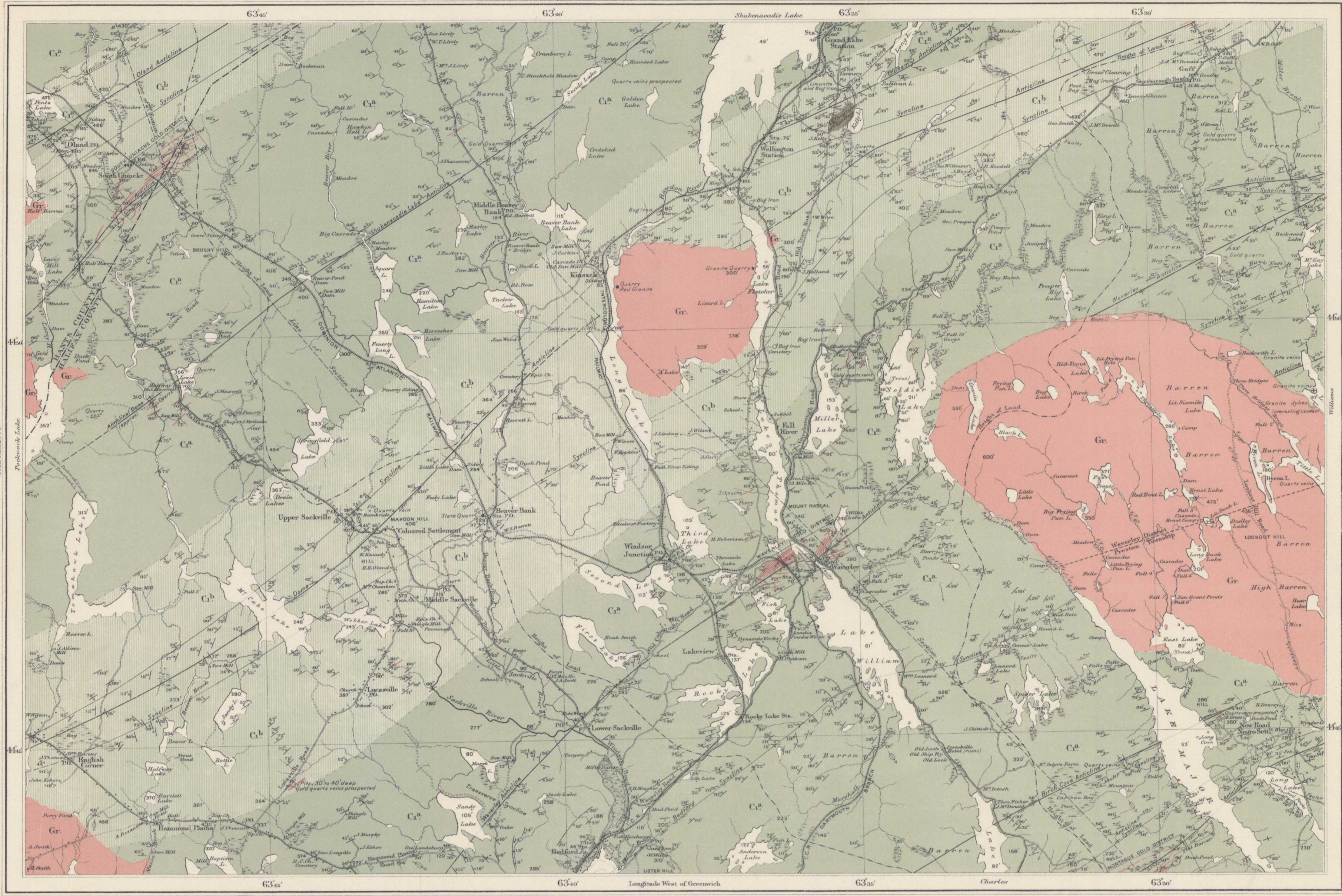
Index to colours and signs

- Carboniferous**
- Gr. Carboniferous Limestone (Waverley Series)
- Lower Cambrian**
- C^b State Division
- C^a Quartzite (Winn Division)
- Irruptive**
- Gr. Granite
- Geological boundaries
- Anticline
- Syncline
- Fault
- Dip and Strike
- Vertical Strata
- Glacial Stria
- Quartz Veins
- Main Roads
- Roads
- Wood Roads
- Elevations in feet above Sea-level

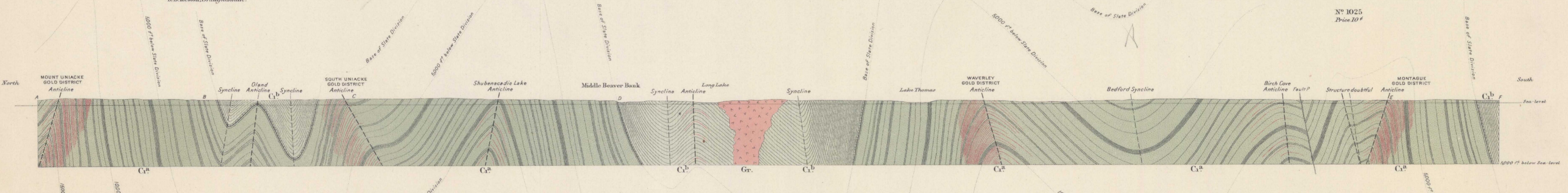
- REFERENCES**
- Annual Report of the Geological Survey Vol. IX, 1886, p. 100 A.
 - Waverley Gold District. Plan 37 72, scale 250 feet to one inch; Annual Report, Vol. XI, 1898, pp. 269-282.
 - South Uniacke Gold District. Plan 37 78, scale 250 feet to one inch; Annual Report, Vol. XII, 1899, p. 179 A.
 - Montague Gold District. Plan 37 74, scale 250 feet to one inch; Annual Report, Vol. XI, 1898, pp. 352-354 A.
 - Iron Ore, Analysis. Annual Report, Vol. XV, 1903, p. 165 A.

Magnetic Declination at Waverley, 21° 06' in 1902.

Note
 The discovery of asbestos north of Waverley is important in relation to the deposits of Moore River Mines.



C. O. Senecal, B.A.Sc., Geographer and Chief Draughtsman.
 R. B. Weston, Draughtsman.



SECTION ON LINES ABCD-DEF
 Horizontal and Vertical Scales 1 inch to 1 mile.
 AB and EF are the continuations of the section beyond this sheet.

PROVINCE OF NOVA SCOTIA
 Halifax and Hants Counties
 (Waverley Sheet, No. 67)
 Scale 1 mile to 1 inch = 63,360

By
 ER. FARIBAUT, B.A.Sc.

Sources of Information
 Topography and Geology from original surveys by E. R. Paribault, assisted by J. M. G. Crookshank, A. Cameron, and F. C. Laberge. Dominion Atlantic Railway from survey by C. O. Senecal. Compilation by E. R. Faribault, O. S. Sullivan, and F. O. Farrell.

NOT TO BE TAKEN FROM LIBRARY
 NE PAS SORTIR DE LA BIBLIOTHÈQUE

5.1.6 Waverley (Halifax and Hants Counties), N.S.
 A. Geol. 1909, Map no. 1025, Copy 2.

This map has been produced from a scanned version of the original map
 Reproduction par numérisation d'une carte sur papier