

Geological Survey of Canada

ROBERT BELL, D.Sc. (Geology), M.D., LL.D., F.R.S., I.S.O. ACTING DIRECTOR.

1905
June Sheet No. 60

Sheet No. 59

Index to colours and signs

Carboniferous

G₄^b Upper and Middle Permian

G₄^a New Glasgow Conglomerate

G₁ Carboniferous Limestone

Devonian

F₃ Miramichi or Union

Silurian

E

Igneous

Sy. Gr. etc. Syenite etc.

Geological boundaries

not traced

Coal crops

Amphibol

86' Heights in feet above sea level

Roads

Wood roads

Faults

Dip and strike

Vertical strain

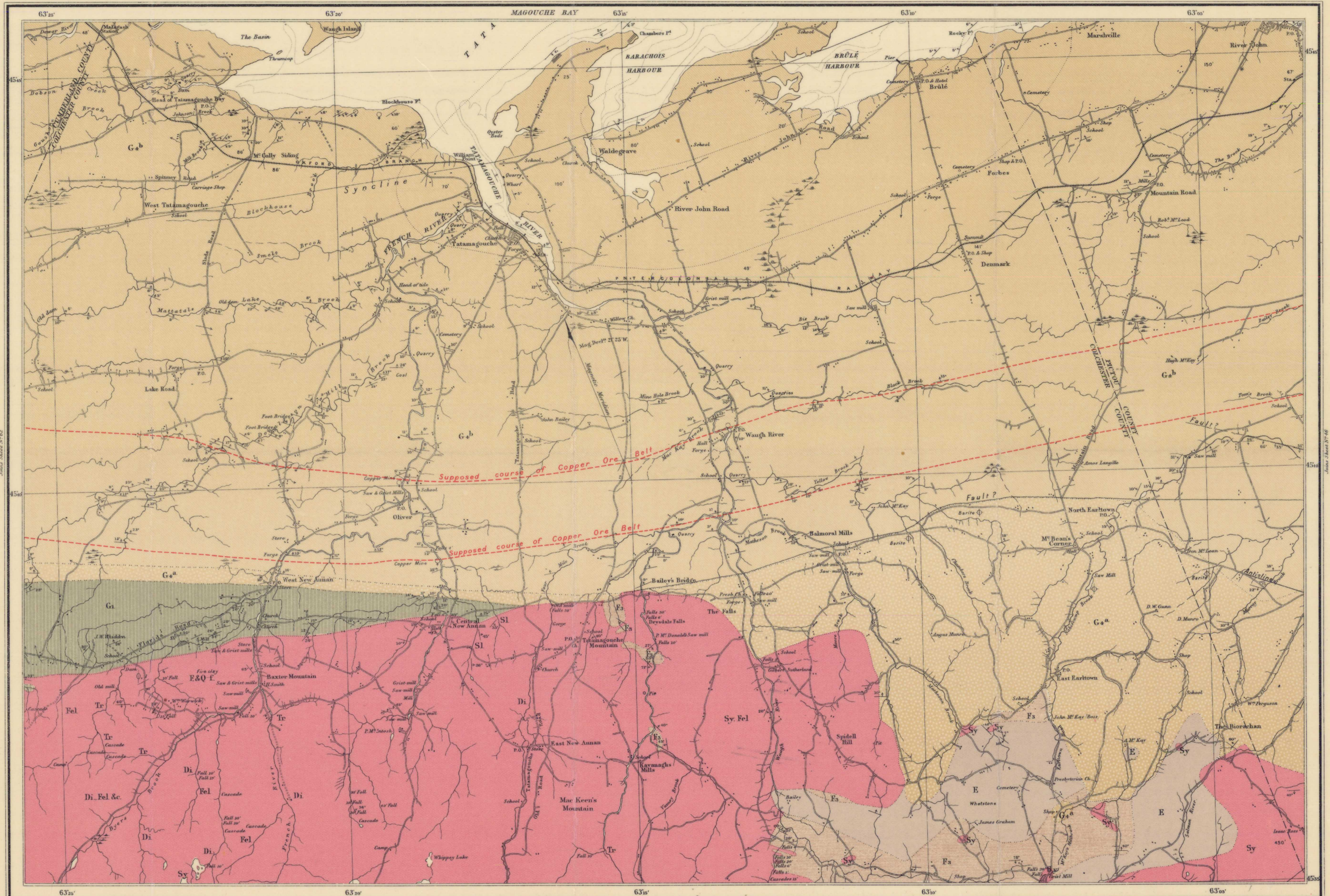
Limestone

Quarry

Copper

REFERENCES

- Ellis, R.W. - C.S.C. Rep. Prog. 1885, Vol. I, Part E.
- Fletcher, Hugh. - 1890-91 Vol. V, Part E, pages 13-16, 58, 102, 114, 118-120, 126-132, 133-139, 144, 153-156, 167, 171, 186, 191.
- G.S.C. Sum. Rep. for 1898, pages 139 and 140.
- 1902, page 296.
- 1903, pages 162 to 167.
- 1904, page 297.
- Dawson, Sir J.W. - Acadian Geology.
- Geuner, A. - Mineralogy and Geology of Nova Scotia.
- Industrial Resources of Nova Scotia.
- Honeyman, D.F. David. - Trans. N.S. Inst. Sc., Vol. III, p. 351, et al.



C.O. Sénécal, B.A. Sc., Geographer and Chief Draughtsman
J.A. Robert, B.A. Sc., Draughtsman

Approximate magnetic declination 21° 25' W.

PROVINCE OF NOVA SCOTIA
Colchester and Pictou Counties
(Tatamagouche Sheet No. 59)

Scale 1 mile to 1 inch = 25340

To illustrate report by
HUGH FLETCHER, B.A.

SOURCES OF INFORMATION

Chain surveys by Scott Barlow, 1871-72.
Observations and plane surveys by Hugh Fletcher assisted by M.H.M. Loom and Colin M. Loom, 1895.
Supplementary information from Admiralty charts and plans of I.C.R. Geology and compilation by Scott Barlow, Dr. R.W. Ellis and Hugh Fletcher.

No. 793
Price 10¢

REPRODUCTION DE LA CARTE GÉOLOGIQUE
N° 59 DE LA RÉGION DE TATAMAGOUCHE

Tatamagouche

793