

Geological Survey of Canada
 ROBERT BELL, D.Sc., F.R.S.E., M.D., LL.D., F.R.S., I.S.O., ACTING DIRECTOR.

1907
 Index Sheet No. 55

Sheet No. 55

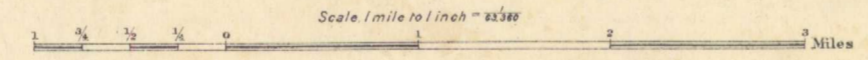
Index to colours and signs

- Carboniferous**
- Gi** Carboniferous Limestone (Windsor Series)
- Lower Cambrian**
 (Gold Bearing Series)
- C¹** Slate Division
- C²** Quartzite (White) Division
- Irruptive**
- Gr** Granite
- Geological boundaries**
- Axis of Anticline**
- Axis of Syncline**
- Roads**
- Ward Roads**
- Dip of anticline Axis**
- Dip and Strike**
- Inverted Dips**
- Vertical Strata**
- Horizontal Strata**
- Cleavage**
- Glacial Stria**
- Quartz Veins**
- Gold**
- Iron**
- Fossils**
- Argentiferous galena**
- Quarry**



C.B. Stoddard, B.A.Sc., Geographer and Chief Draughtsman

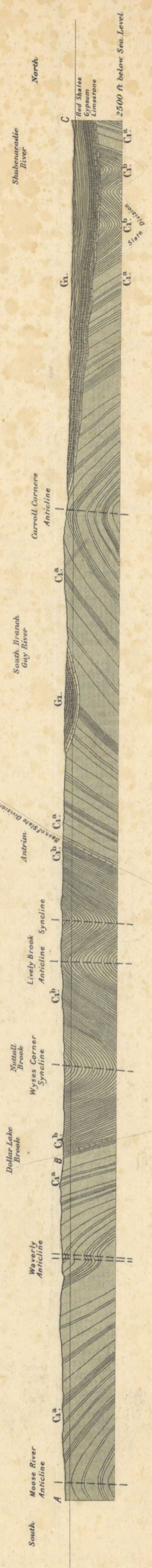
PROVINCE OF NOVA SCOTIA
 Halifax, Colchester and Hants Counties
 (Gay River Sheet, No. 55)



by E.R. FARIBAUT, B.A.Sc.

SOURCES OF INFORMATION
 Topography and Geology from original surveys
 by E.R. Faribault
 Compilation by E.R. Faribault.

No. 908
 Price 30¢



SECTION ON LINE A.B.C.
 Horizontal and Vertical Scales 1 mile to 1 inch

NOT TO BE TAKEN FROM LIBRARY
 NE PAS SORTIR DE LA BIBLIOTHEQUE