

Halifax City 1908. Map 1019
S.I.G.
A. Geol.
COPY 2.

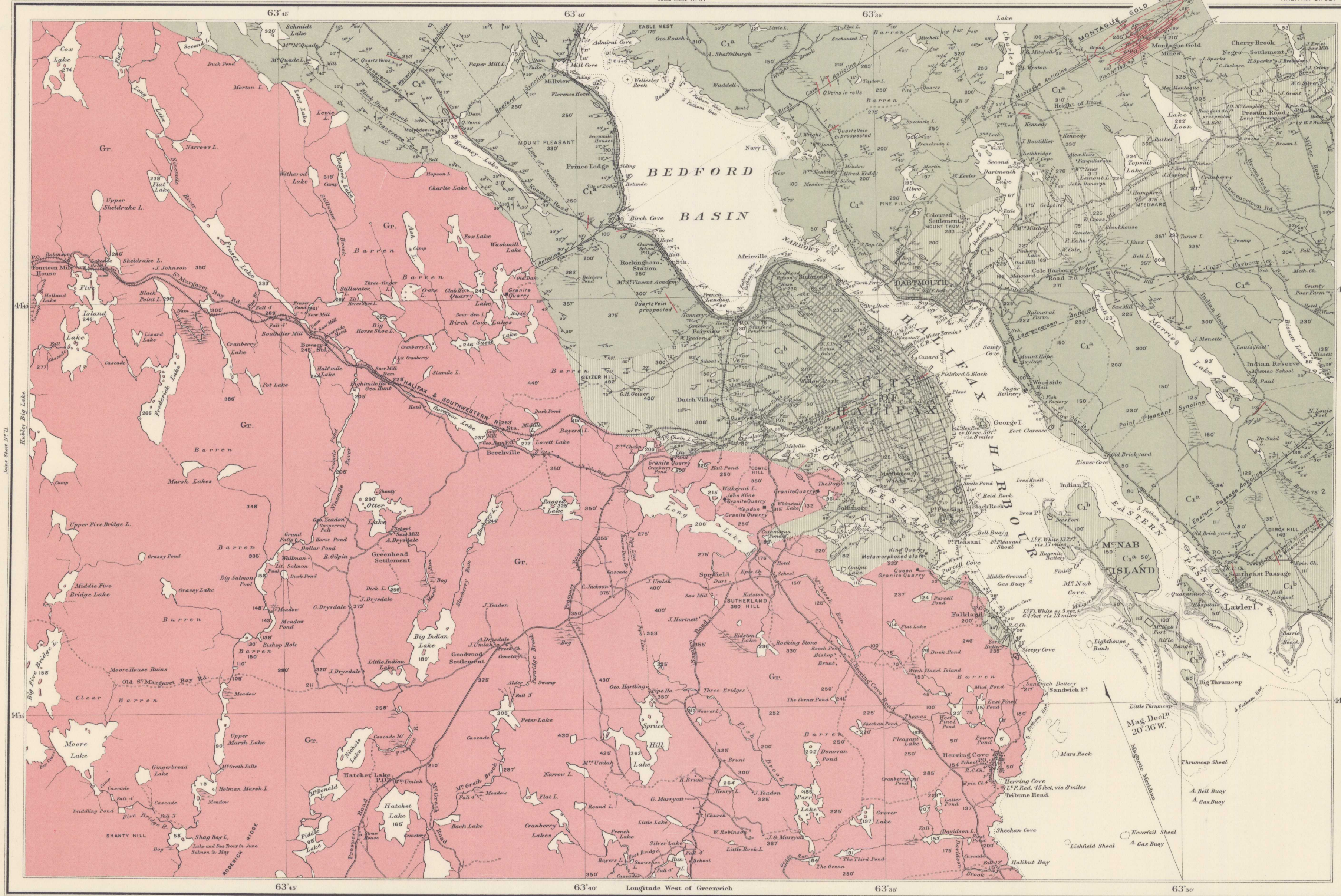
DEPARTMENT OF MINES
GEOLOGICAL SURVEY BRANCH
Hon. W. TEMPLEMAN, MINISTER; A. PLUM, DEPUTY MINISTER;
R. W. BROOK, ACTING DIRECTOR.
1908
Halifax Sheet No. 68

Index to colours and signs

- Lower Cambrian (Gold Bearing Series)
 - C₁^b State Division
 - C₁^a Quartzite (White) Division
- Irruptive
 - Gr. Granite
- Geological boundaries
 - Anticlines
 - Synclines
 - Faults
 - Dip of Anticline
 - Dip and Strike
 - Inverted Dip
 - Vertical Strata
 - Horizontal Strata
 - Glacial Striae
 - Iron
 - Molybdenite
 - Graphite
 - Limestone
 - Quartz Veins
 - Quarry
- Main Roads
- Roads
- Wood Roads
- Electric Railway
- 60 Elevations in feet above sea level

REFERENCES

Annual Report of the Geological Survey, Vol. IX, 1896, p. 100 A.
Summary Report, 1906, pp. 147-152.
Montague Gold District
Plan, No. 7416, Scale 250 feet to one inch.
Annual Report, Vol. XI, 1898, pp. 152-154 A.



C. O. Senechal, B.A. Sc., Geographer and Chief Draughtsman.
R. B. Worston, Draughtsman.

PROVINCE OF NOVA SCOTIA

Halifax County

(City of Halifax Sheet, No. 68)

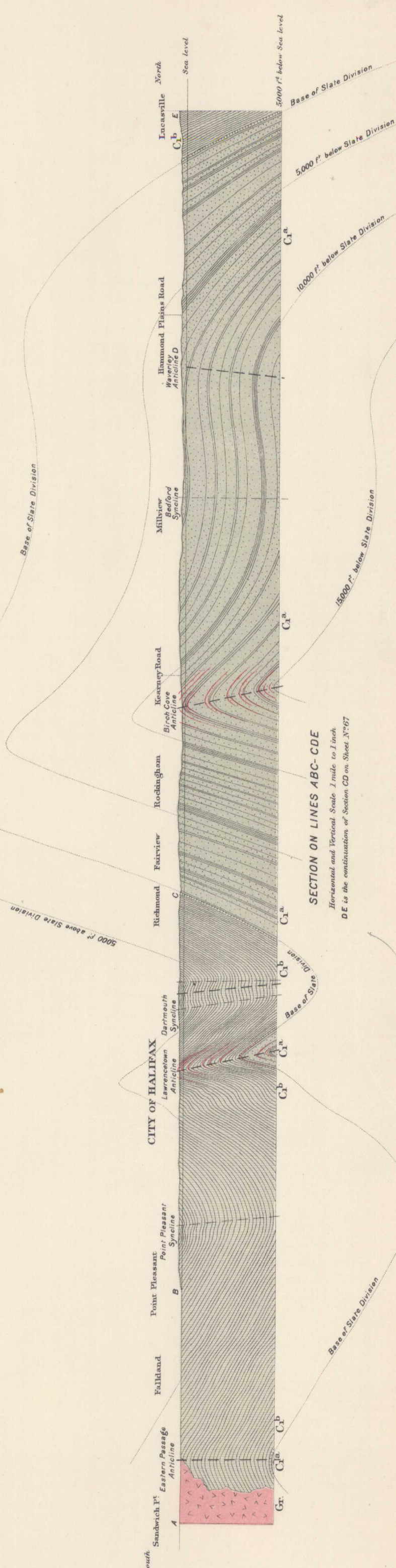
Scale 1 mile to 1 inch = 25,344

By
E. R. FARIBAULT, B.A. Sc.

Sources of Information

Topography and Geology from original surveys by E. R. Faribault assisted by J. M. G. Cruikshank, A. Cameron and E. C. Laberge.
Coast line from Admiralty Charts, City of Halifax mostly from City Engineer's Plan.
Elevations in Halifax and vicinity from Royal Engineers surveys.
Compilation by E. R. Faribault, O. G. Sullivan and F. O'Connell.

No. 1019
Price 10 cts.



SECTION ON LINES ABC-DE
Horizontal and Vertical Scale, 1 inch to 1 mile
DE is the continuation of Section CD on Sheet No. 67

S.I.G. Halifax County, N.S. City of Halifax sheet no. 68.
A. Geol. 1908. Map 1019

NOT TO BE TAKEN FROM LIBRARY
NE PAS SORTIR DE LA BIBLIOTHÈQUE

1019