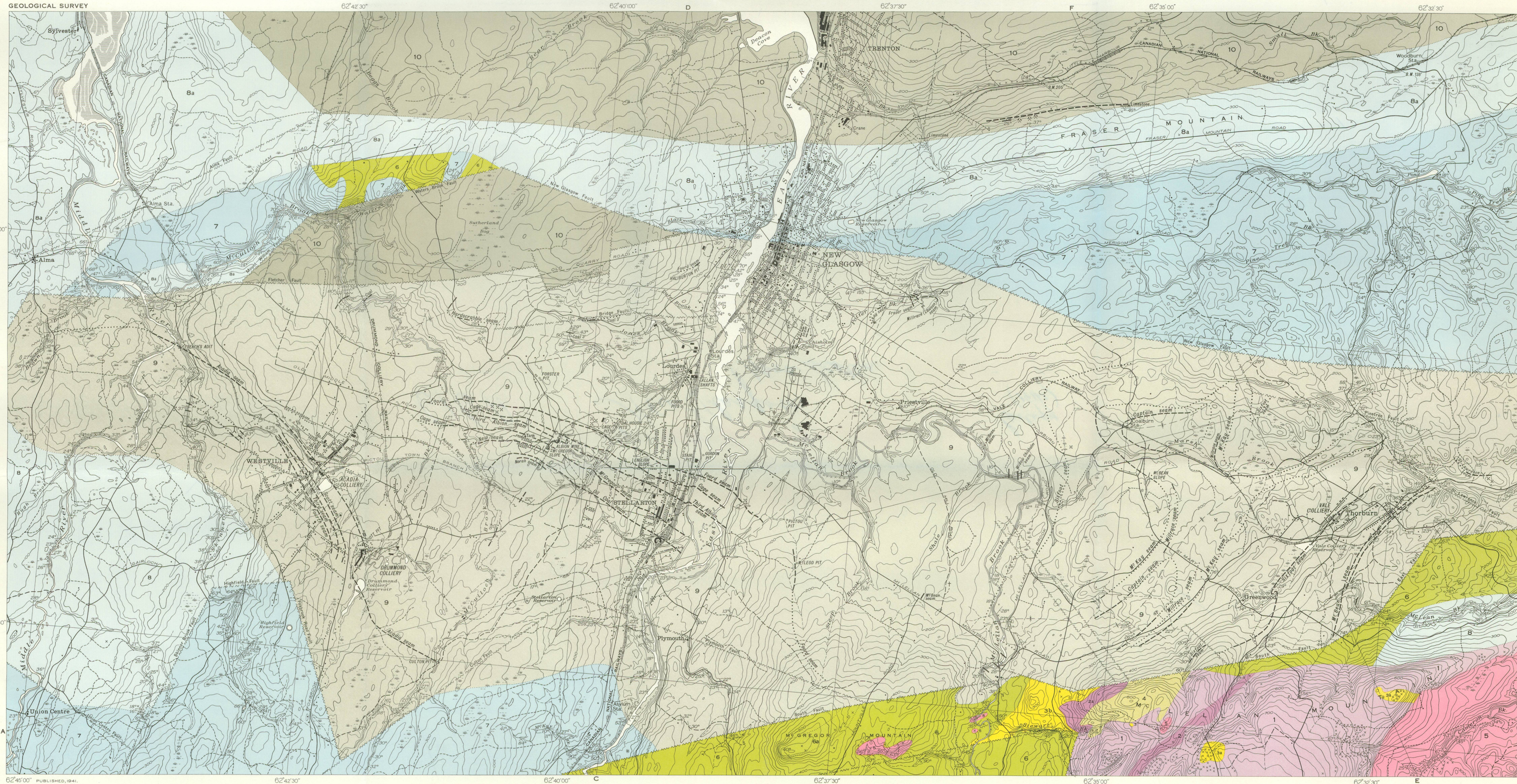
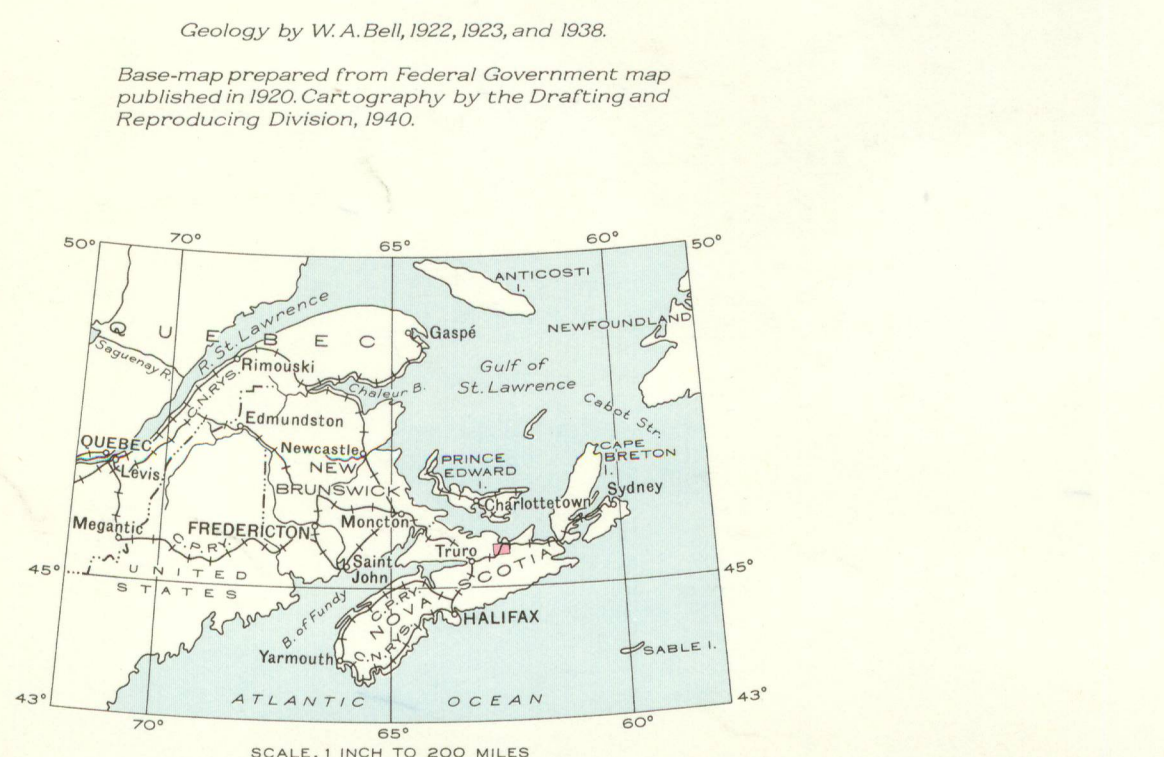


Structure sections along lines A-B, C-D, and E-F

LEGEND

- CARBONIFEROUS**
- PENNSYLVANIAN**
- STELLARTON SERIES**
9 Grey, red and mottled shale and sandstone, conglomerate, coal seams
- CUMBERLAND SERIES**
8 Brownish-red sandstone and shale, grey sandstone, red and grey conglomerate, 8a NEW GLASGOW FORMATION: conglomerate
- CANSO SERIES**
7 Brownish-red sandstone and shale, grey sandstone and shale, limestone conglomerate
- MISSISSIPPIAN**
- WINDSOR SERIES**
6 Red shale, sandstone, conglomerate, limestone, gypsum; 6a, basic lava
- SILURIAN**
- ARISAIG SERIES**
5 Grey shale and sandstone, calcareous shale and sandstone
- ORDOVICIAN (?)**
- 4 STEWART BROOK FORMATION: red argillite, arkose, conglomerate
- 3a, basic intrusives, 3b, acidic intrusives
- ORDOVICIAN**
- 2 Andesitic lava, silicified tuff, cherty quartzite; 2a, greenstone
- 1 Green argillite, dark greywacke
- PICTOU SERIES:**
10 Red and grey sandstone, grit and shale, impure, thin coal seams

- Coal seam
- Bedding (inclined, vertical, overturned)
- Fault
- Anticlinal axis
- Synclinal axis
- Rock outcrop
- Glacial striae
- Road, streets, and buildings
- Road not well traveled
- Bush road, logging road, and path
- Mine tramway
- Elevated tramway
- Church
- School
- Post Office
- Cemetery
- Shaft house
- Shaft and pit
- Slope entrance
- Quarry
- Prospect
- Wharf
- Dam
- Bench-mark
- Town boundary
- Intermittent stream
- Marsh
- Tidal flat
- Contours (interval 20 feet)
- Depression contour
- Mine dump



MAP 616A
NEW GLASGOW
PICTOU COUNTY
NOVA SCOTIA
Scale, 2x66 or 1 Inch to 2000 Feet
Magnetic declination at Stellarton, 1940, 24°W West.