

Geological Survey of Canada

ROBERT BELL, M.D. D.Sc. (Hon.), LL.D., F.R.S. I.S.O. ACTING DIRECTOR.

1905

Sheet No 63

Index to colours and signs

- Triassic**
- H**
- Carboniferous**
- G₁** Carboniferous Limestone
- G_m** Carboniferous Conglomerate
- Devonian**
- F₅** Misses or Union
- F₂** Cordite Shales or Riverdale
- F** Not Subdivided
- Igneous**
- Gr. Sy. etc.** Granite, Syenite, Feldite, etc.
- Tr**
- Geological boundaries
- not traced
- Coal crops
- 330' Heights in feet above sea level
- Roads
- Wood roads
- Glacial striae
- Dip and strike
- Vertical strata
- Horizontal strata
- Fossils
- Quarry
- Limestone
- Iron
- Spring

BIBLIOGRAPHY

Fletcher, Hugh. - G.S.C. Summary Reports 1888 p. 30, 1890, p. 41, 1900, pp. 167, 163.

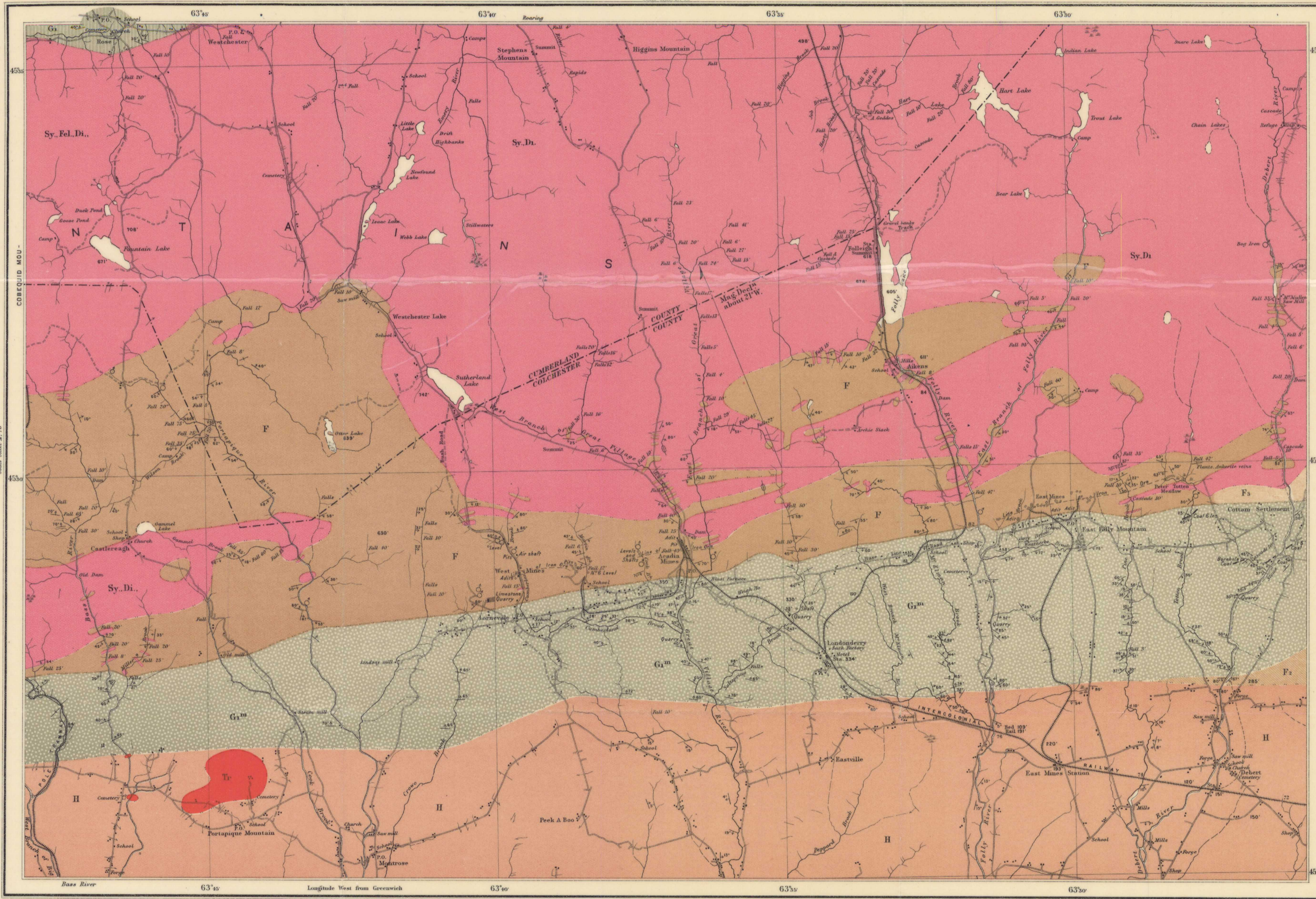
Barlow, Scott. - G.S.C. Rep. 1871-73.

Selwyn, D.A.R.C. - G.S.C. Rep. 1872-3 pp. 19-27, 1873-4, pp. 224, 253, 254, 1874-75, pp. 14, 316.

Ells, D.R.W. - G.S.C. Rep. Prog. 1884.

Fletcher, Hugh. - G.S.C. Rep. Prog. Vol. V part II p. 1890-91.

Chalmers, Dr Robt Annual Report Vol. VII, 1894, pp. 1 to 149.



C.O. Soudal, B.A.Sc., Geographer and Chief Draughtsman.

PROVINCE OF NOVA SCOTIA
Cumberland and Colchester Counties
(Londonderry Sheet No 63)
Scale 1 mile to 1 inch = 2539



to illustrate report of
HUGH FLETCHER B.A.

SOURCES OF INFORMATION

Chain surveys by Scott Barlow, 1871-73.
Odometer and pace surveys by Hugh Fletcher, assisted by A. E. Colwell and M. H. Wood.
Supplementary information from Crown Lands, railway and mines plans.
Geology and compilation by Hugh Fletcher.

No 836
Price 10 cts.

Londonderry

REVUE ZONALE DE LA BRITANNIQUE
MOL TO BE TAKEN FROM THE

836