

Geological Survey of Canada

ROBERT BELL, M. D., D.Sc. *honoris*, LL.D., F.R.S., I.S.O., ACTING DIRECTOR.
1905

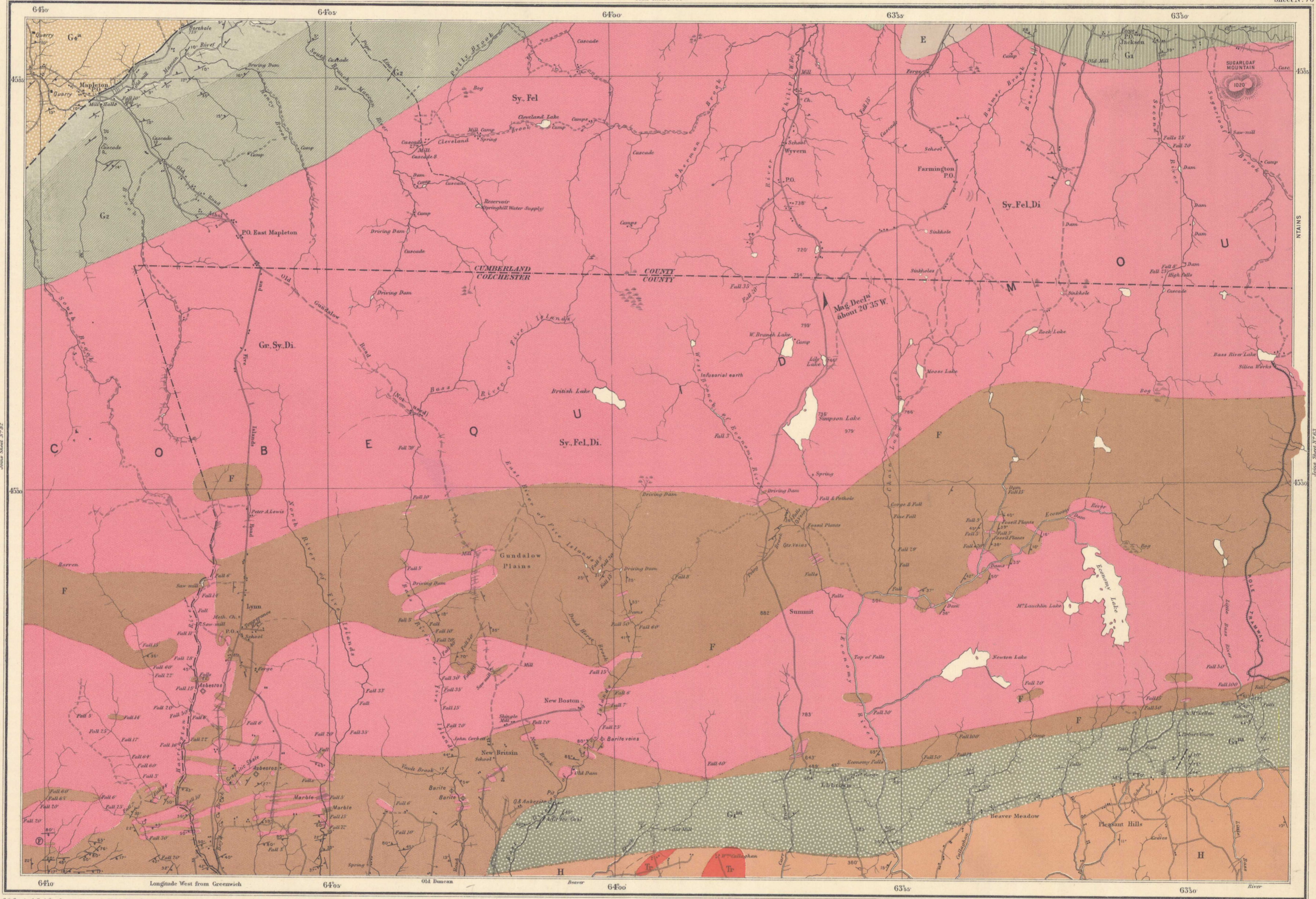
Joint Sheet N° 77

Sheet N° 76

Index to colours and signs

- Triassic
 - H
- Carboniferous
 - G⁴ New Glasgow Conglomerate
 - G³ Coal Measures
 - G² Millstone Grit
 - G¹ Carboniferous Limestone
 - G⁰ Carboniferous Conglomerate
- Devonian
 - F Not subdivided
- Silurian
 - E Not subdivided
- Igneous
 - Sy. Fel. etc. Syenite, Felite, etc.
 - Tr Triassic trap
- Geological boundaries
 - not traced
 - Coal crops
 - Boreholes
 - 80° Heights in feet above sea-level
 - Roads
 - Wood roads
 - Dip and strike
 - Vertical strata
 - Horizontal strata
 - Limestone
 - Quarry
 - Asbestos
 - Barite
 - Iron
 - Infusorial earth
 - Spring

BIBLIOGRAPHY
 Barlow, Scott - G. S. C. Summary Reports 1871 to 78.
 Ellis, D. R. W. - G. S. C. 1884.
 Fletcher, Hugh - G. S. C. Summary Reports
 1890, p. 4; 1891, p. 36; 1894, p. 93,
 1898, p. 167; 1900, pp. 167, 163.
 Chalmers, D. F. Robt. Annual Report
 Vol. VII, 1894, pp. 1 to 119.



C.O. Semcal, B.A. Sc., Geographer and Chief Draughtsman

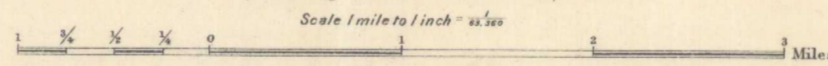
PROVINCE OF NOVA SCOTIA
 Cumberland and Colchester Counties
 (Economy River Sheet, N° 76.)

SOURCES OF INFORMATION

Chain surveys by Scott Barlow, 1871-78.
 Odometer and pace surveys by Hugh Fletcher assisted by
 D. V. Eaton, M. H. McLeod and A. E. Colwell.
 Supplementary information from Crown Lands plans.
 Geology and compilation by Hugh Fletcher.

N° 839

Price 10 cts.



To illustrate report by
 HUGH FLETCHER, B.A.

PROPERTY OF LIBRARY
 GEOLOGICAL SURVEY OF CANADA
 Victoria Memorial Museum Bldg., Ottawa
 LENT TO _____
 DATE _____
 PLEASE RETURN

NOT TO BE TAKEN FROM LIBRARY
 NE PAS SORTIR DE LA BIBLIOTHÈQUE



839

Economy River.

5-1660181 81 89A

A. Geol.