

Geological Survey Department,
Canada.

HONOURABLE THOMAS MAYNE DALY, MINISTER.

GEORGE M. DAWSON, CMG, LL.D., F.R.S. & C., DIRECTOR.

1885.

Sheet

Nº 33.

- Legend.**
- Lower Cambrian (Oryzohyal and Ferruginous Slate Group) Gold-bearing Series.
 - Lower Cambrian (Quartzite Group) Gold-bearing Series.
 - Geological boundaries not traced.
 - Anticlinal Axes not traced.
 - Synclinal Axes not traced.
 - Roads.
 - Wood Roads.
 - White Lines indicate Faults.
 - Dip of strata.
 - Dip of Anticlinal Axes.
 - Dips. Inverted Dips. Strikes.
 - Vertical Strata. Horizontal Strata.
 - Clearance. Glacial Strata.
 - Quarry. Iron.
 - Quartz Veins. Gold. Mines.

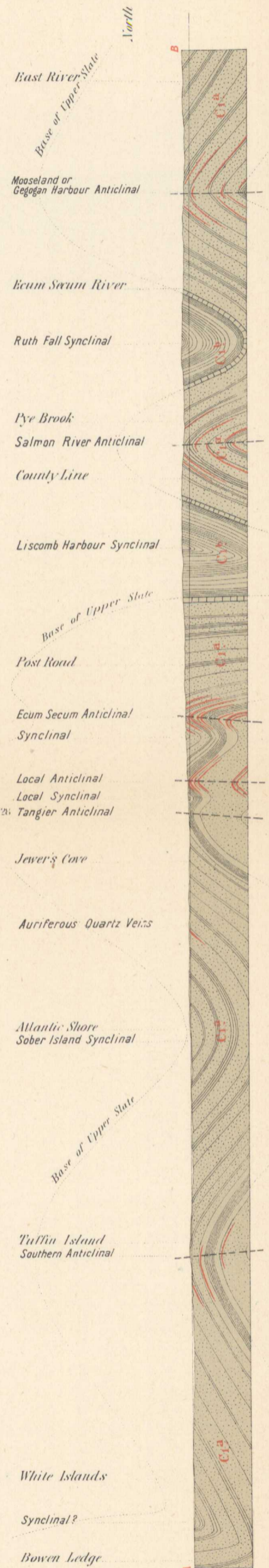
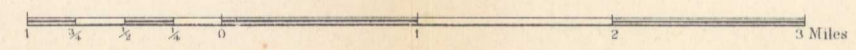


Compiled and drawn from Original Surveys by E. R. Fairbairn. Coast Line from the Admiralty Charts.

The Subscribers Litho. and Print. Company Montreal.
PROVINCE OF NOVA SCOTIA,
(Gloucester and Halifax Counties).
Natural Scale 1:50,000.
Scale 1 mile to one inch.

Geology by E. R. Fairbairn
Part I, Annual Report, Vol. II, 1886.

551



SECTION ON LINE A-B.
Horizontal and Vertical Scales built to one inch.
Red lines indicate quartz veins.

MAP LIBRARY / CARTOTHEQUE

NOT TO BE TAKEN FROM LIBRARY
NE PAS SORTIR DE LA BIBLIOTHEQUE