

# Geological Survey of Canada

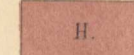
ROBERT BELL, D.Sc., L.L.D., M.D., F.R.S., ACTING DIRECTOR.

1902.

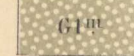
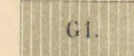
Sheet No. 58.

Index to colours and signs.

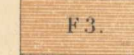
Triassic.



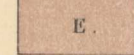
Carboniferous.



Devonian.



Silurian.



Igneous.



Geological boundaries.

--- " " not traced.

— Coal crops.

- - - " " doubtful.

— Roads.

- - - Wood roads.

50' Heights in feet above sea level.

∠ Dip and strike. ∞ Glacial striae.

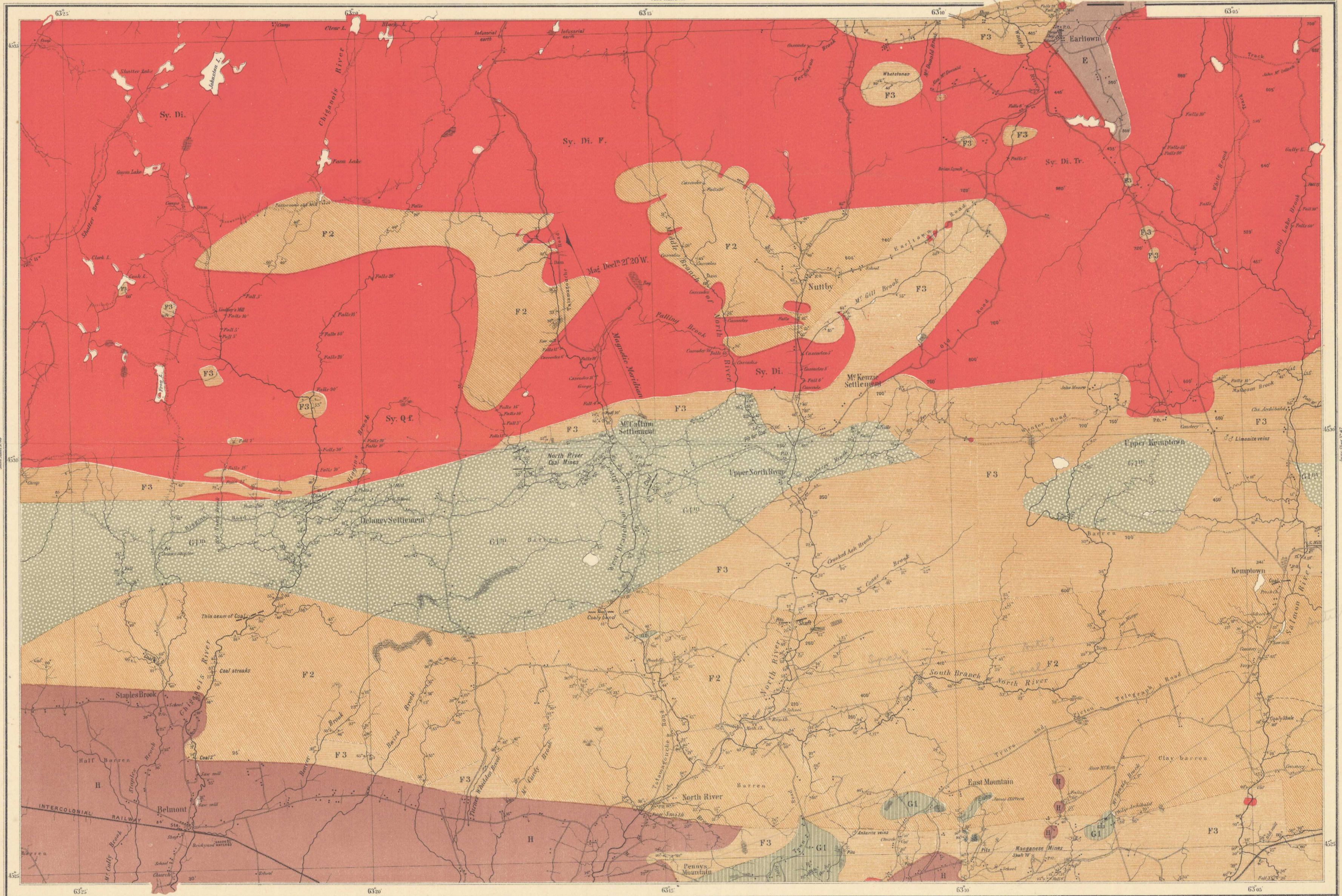
⊥ Vertical strata. ⊥ Horizontal strata.

▨ Limestone. ■ Gypsum.

\* Manganese. ○ Iron.

• Quarry.

Reference:  
Part P. Annual Report  
Vol. V. Part II, 1890-91.



Compiled and drawn from original surveys by H. Fletcher

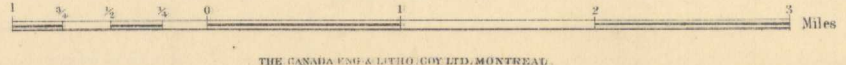
Geologically surveyed by H. Fletcher

PROVINCE OF NOVA SCOTIA  
(Colchester County)  
(Earltown Sheet, No. 58.)  
Natural Scale — 1:62,500  
Scale: 1 mile to 1 inch.

NOT TO BE TAKEN FROM LIBRARY  
NE PAS SORTIR DE LA BIBLIOTHÈQUE



No. 637  
Price: 10cts.



THE CANADA GEOLOGICAL SURVEY, MONTREAL.

637

This map has been produced from a scanned version of the original map  
Reproduction par numérisation d'une carte sur papier