

Geldsetzer

Geological Survey of Canada

ROBERT BELL, D.Sc. (London), M.D., LL.D., F.R.S., I.S.O., ACTING DIRECTOR.

1903
June Sheet N°62

Sheet N°62

Index to colours and signs

Carboniferous

- G_4^b Upper and Middle Permian
- G_4^a New Glasgow Conglomerate
- G_2^b Millstone Grit
- G_2^a Millstone Grit conglomerate
- G_1 Carboniferous Limestone

Silurian

- E

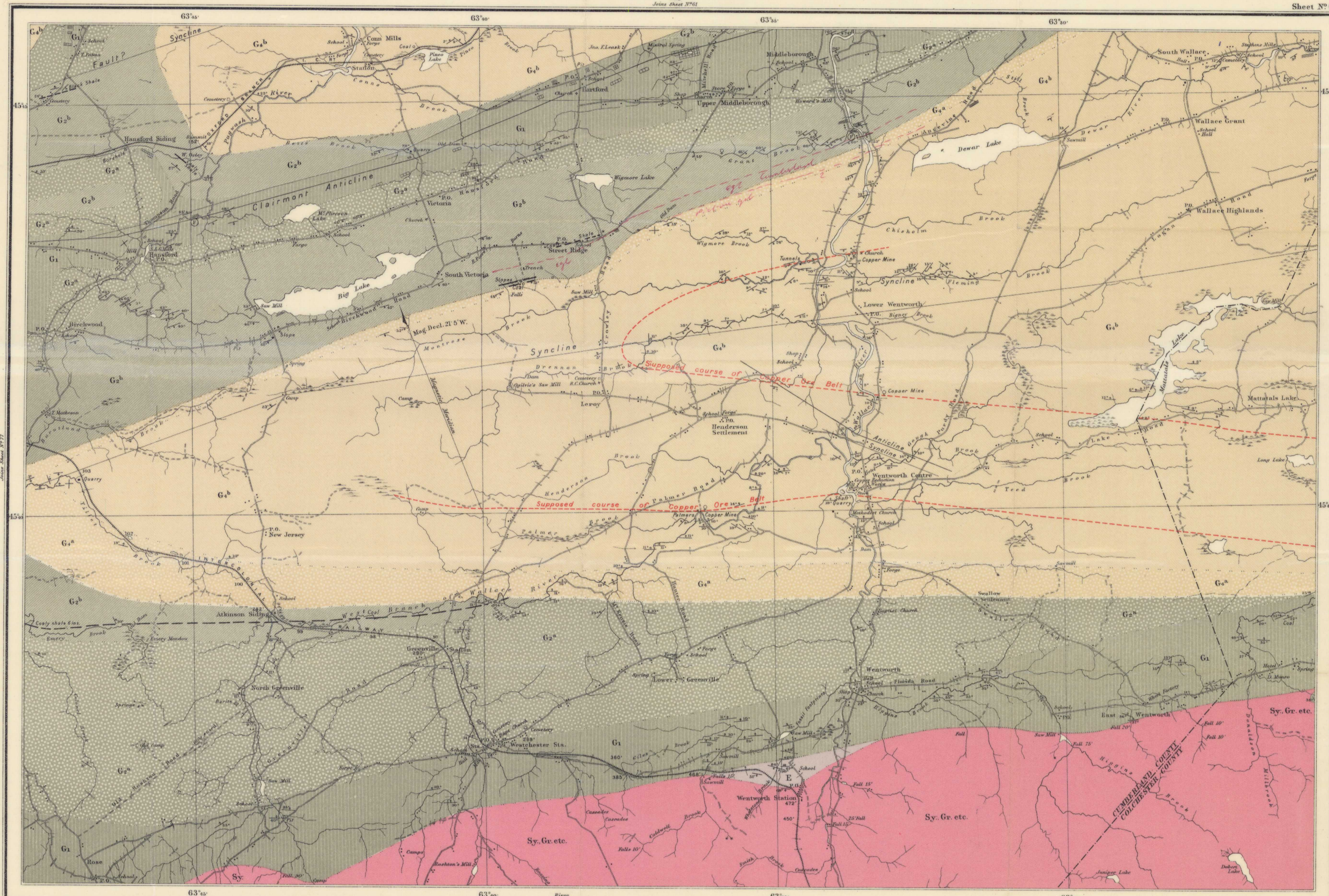
Igneous

- Sy. Gr. etc. Syenite, etc.

- Geological boundaries
- not traced
- Coal crops
- doubtful
- 85
- Heights in feet above sea-level
- Roads
- Wood roads
- Barabole
- Fault
- Glacial striae
- 10%
- Dip and strike
- Spring
- Vertical strata
- Horizontal strata
- Limestone
- Gypsum
- Basalt
- Mn. Manganese
- Iron
- Quarry
- Copper
- Basalt

REFERENCES

- Hills, R.W. G.S.C. Rep. Prog. 1885, Vol. I, Part E.
- Fletcher, Hugh. 1890-91 Vol. V, Part E, pages 13-16, 58, 102, 114, 118, 120, 128, 132, 135-139, 144, 153, 156, 167, 171, 186, 191.
- G.S.C. Sum. Rep. for 1898, pages 139 and 140.
- 1902, page 396.
- 1903, pages 162 to 167.
- 1904, page 297.
- Dawson, Sir J.W. Acadian Geology.
- Gesner, A. Mineralogy and Geology of Nova Scotia.
- Industrial Resources of Nova Scotia.
- Honeyman, D. David. Trans. N.S. Inst. Sc., Vol. III, p. 351 et al.

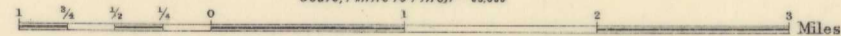


C.O. Senecal, B.A.Sc., Geographer and Chief Draughtsman.
J.A. Robert, B.A.Sc., Draughtsman.

Approximate magnetic declination 21° 5' W.

PROVINCE OF NOVA SCOTIA
Cumberland and Colchester Counties
(Wentworth Sheet, N°62)

Scale, 1 mile to 1 inch = 25 miles



To illustrate report of
HUGH FLETCHER, B.A.

SOURCES OF INFORMATION

Chain surveys by Scott Barlow (1871-78).
Observations and plane surveys by Hugh Fletcher, assisted by MEM' Lead
and John McLeod (1882).
Supplementary information from Admiralty charts and plans of E.C.P.
Geology and compilation by Scott Barlow, Dr. R.W. Ellis and Hugh Fletcher.

N° 796
Price 10¢

Wentworth

HE 102 ZOKLIK DE TV BIBLIOTHEQUE
MOL 10 BE IJKEN BROW TIJSTRA

796