

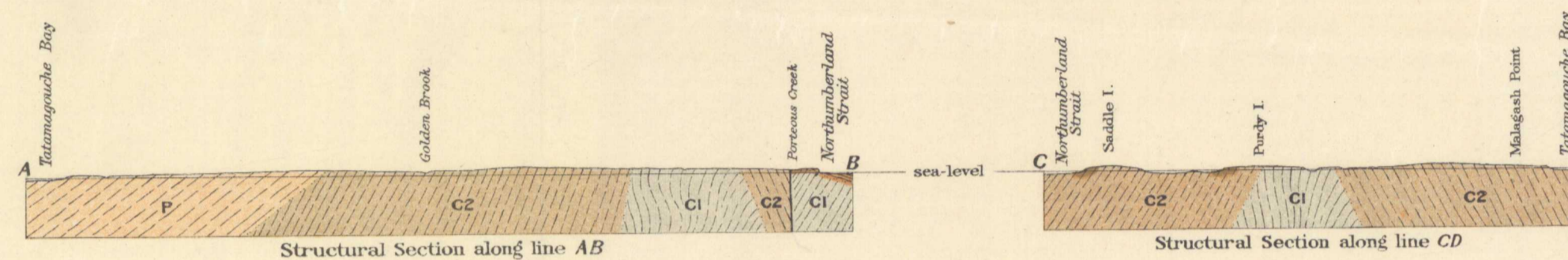
Canada
Department of Mines

HON. ARTHUR MEIGHEN, MINISTER; R.G. McCONNELL, DEPUTY MINISTER.

GEOLOGICAL SURVEY

WILLIAM McINNES, DIRECTING GEOLOGIST.

Issued 1920



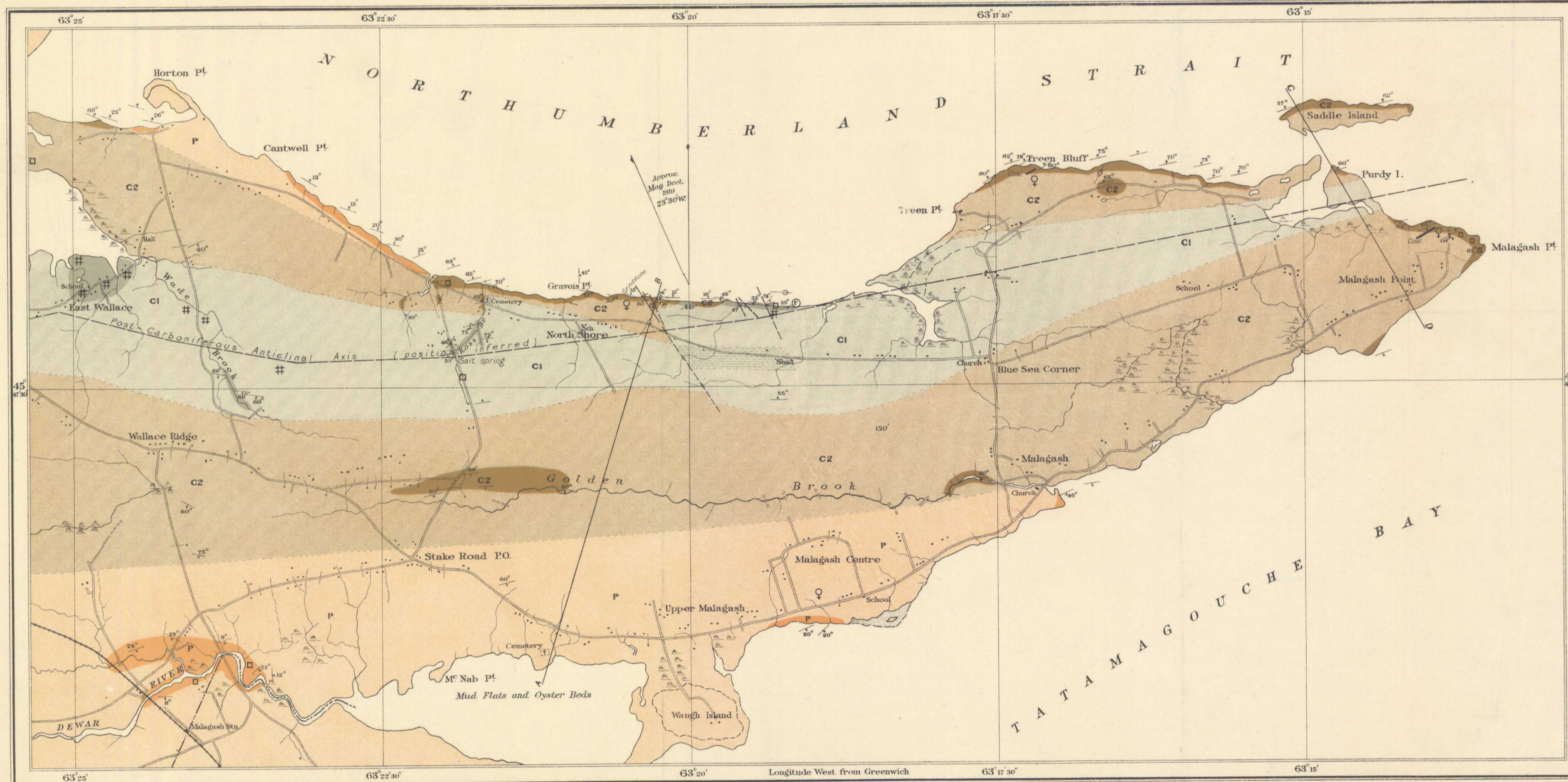
OUTLINE MAP

LEGEND

Symbols

- Geological boundary
- Geological boundary (position inferred)
- Fault
- Fault (position inferred)
- Dip and strike
- Dip and strike (strata overturned)
- Horizontal strata
- Vertical strata
- Glacial striae
- Fossil locality
- Limestone
- Gypsum
- Copper

- P** Bedrock exposed (shale, sandstone, conglomerate)
- P** Bedrock concealed
- C2** Bedrock exposed (shale, limestone, sandstone, conglomerate)
- C2** Bedrock concealed
- Salt strata concealed by overlying strata and boulder clay
- C1** Bedrock exposed (gypsum, limestone, shale, sandstone, conglomerate)
- C1** Bedrock concealed

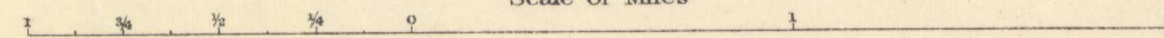


C-O. Senécal, Geographer and Chief Draughtsman.
J.O. Fortin, Draughtsman.

Publication No. 1796

MALAGASH PENINSULA, CUMBERLAND COUNTY, NOVA SCOTIA

Scale of Miles



NOT TO BE TAKEN FROM LIBRARY
NE PAS SORTIR DE LA BIBLIOTHÈQUE

To accompany Report by A.O. Hayes.
Memoir 121

Malagash

S.I.C.
A. God.



1796