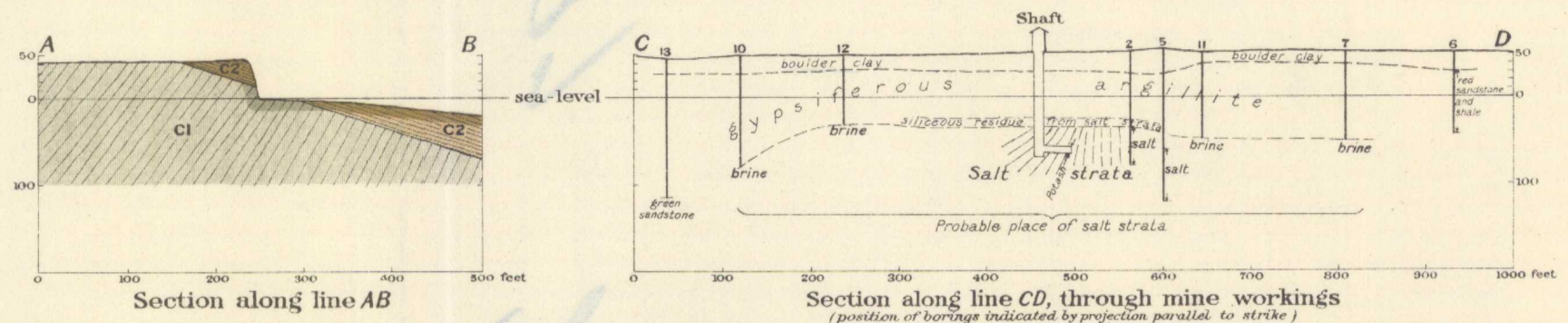


Canada Department of Mines

HON. ARTHUR MEIGHEN, MINISTER: R.G.M. CONNELL, DEPUTY MINISTER.

GEOLOGICAL SURVEY
WILLIAM McINNES, DIRECTING GEOLOGIST

Issued 1920



LEGEND

Symbols

- Geological boundary
- Geological boundary (position inferred)
- Fault
- Fault (position inferred)
- Fault (downthrown side)
- Fault (direction of displacement)
- Dip and strike
- Dip and strike (strata overturned)
- Horizontal strata
- Drill hole (salt or brine obtained)
- Drill hole (barren)
- Contours showing landforms and elevations above sea-level. Interval 10 feet

PENNSYLVANIAN
(MILLSTONE GRIT)

C2
Bedrock exposed
(shale, limestone, sandstone,
conglomerate)

C2
Bedrock concealed

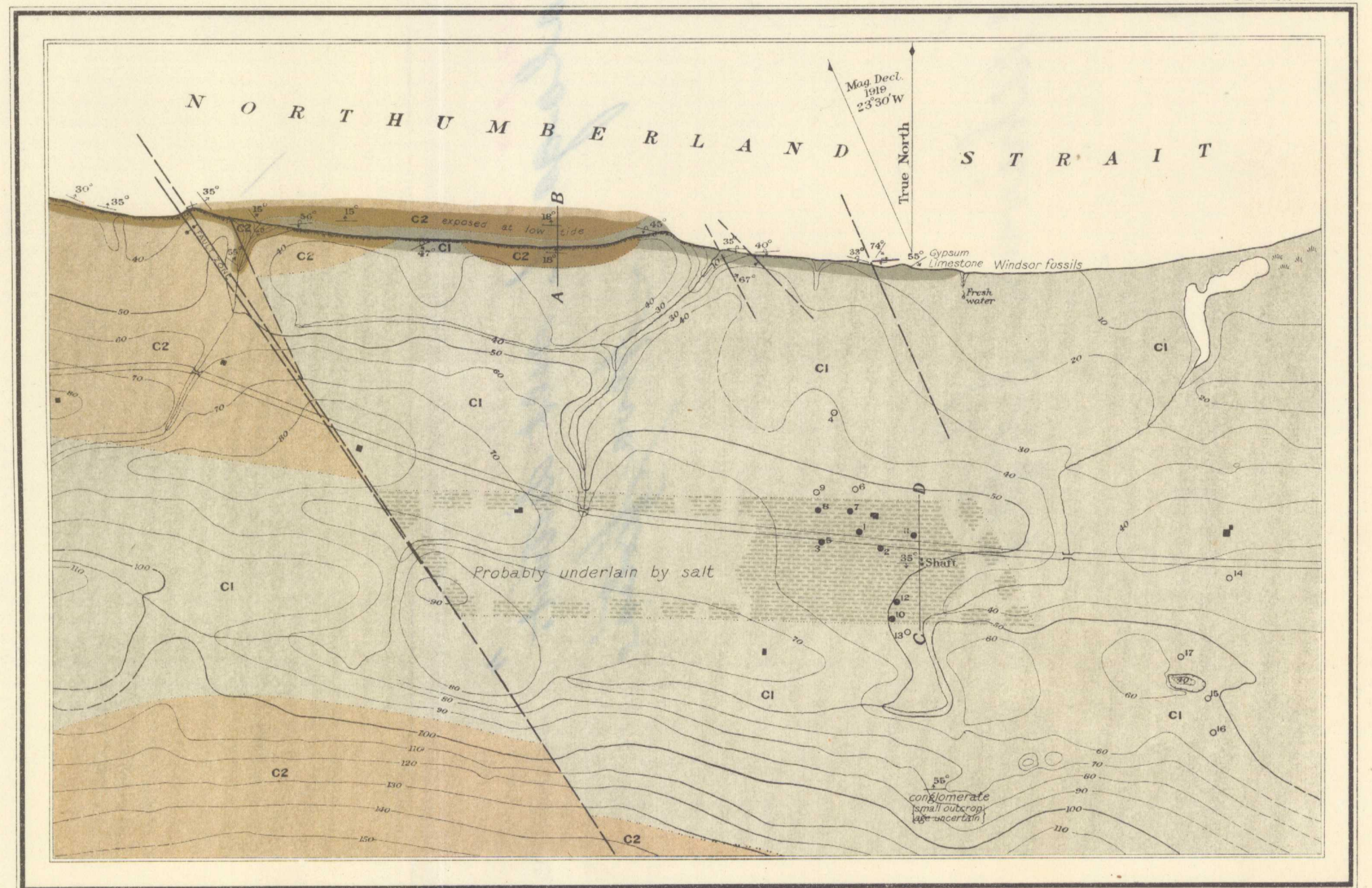
Area underlain by salt
(proved by drilling)

MISSISSIPPIAN
(WINDSOR)

C1
Bedrock exposed
(gypsum, limestone, shale,
sandstone, conglomerate)

C1
Bedrock concealed

Approximate magnetic declination
23° 30' West



C.O. Senécal, Geographer and Chief Draughtsman.
J.O. Fortin, Draughtsman

Publication No. 1797

MALAGASH SALT DISTRICT, CUMBERLAND COUNTY, NOVA SCOTIA

Scale of Feet
1000 500 0 500 1000

NOT TO BE TAKEN FROM LIBRARY
NE PAS SORTIR DE LA BIBLIOTHÈQUE

To accompany Report by A.O. Hayes



1797