

Canada Department of Mines

HON. CHARLES STEWART, MINISTER; CHARLES CAMSELL, DEPUTY MINISTER.

GEOLOGICAL SURVEY
W.H. COLLINS, DIRECTOR.

Issued 1924

June Sheet N° 88

CHESTER BASIN SHEET N° 87

Index to colours and signs

Lower Carboniferous

Gr 1 Windsor series
(limestone, gypsum, sandstone)

Devonian

Gr 2 Muscovite granite

Gr 1 Biotite granite

Cambrian or Precambrian

(Gold-bearing series)

Gr 1b Halifax formation
(slate)

Gr 1a Goldenville formation
(quartzite, vein, and slate)

Geological boundary (determined)

Geological boundary (approximate)

Anticline

Syncline

Fault

Dip and strike

Glacial striae

Sink-holes (gypsum or limestone)

Limestone outcrops

Gold quartz vein

Pyritic dyke

Sn

Tin

Mo Molybdenite

W Tungsten

Cu Copper

As Arsenopyrite

Bi Bismuth

Li Lithium

Ra Radioactive mineral

Si Semi-opal and smoky quartz

Diatom Infusorial earth (diatomaceous)

Fe Bag iron or ochre

C Coal float

Prospecting pit

Quarry

W.P. site Water power site

Principal highway

Public road

Wood road

Post office

School

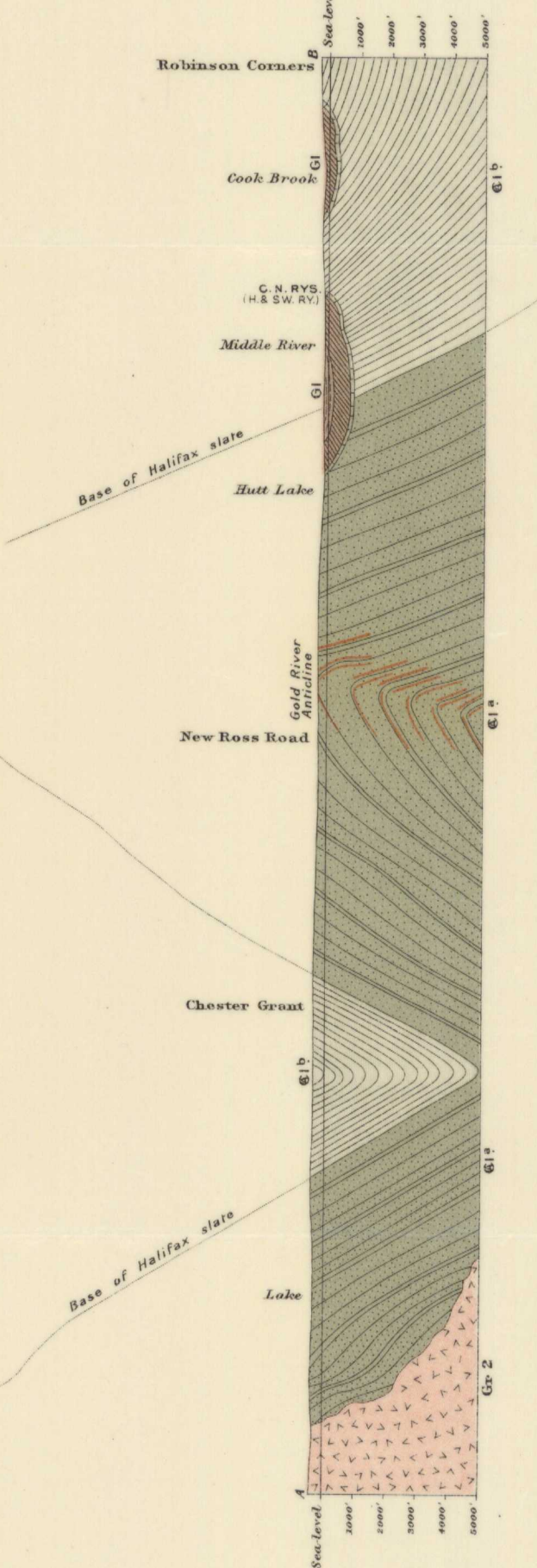
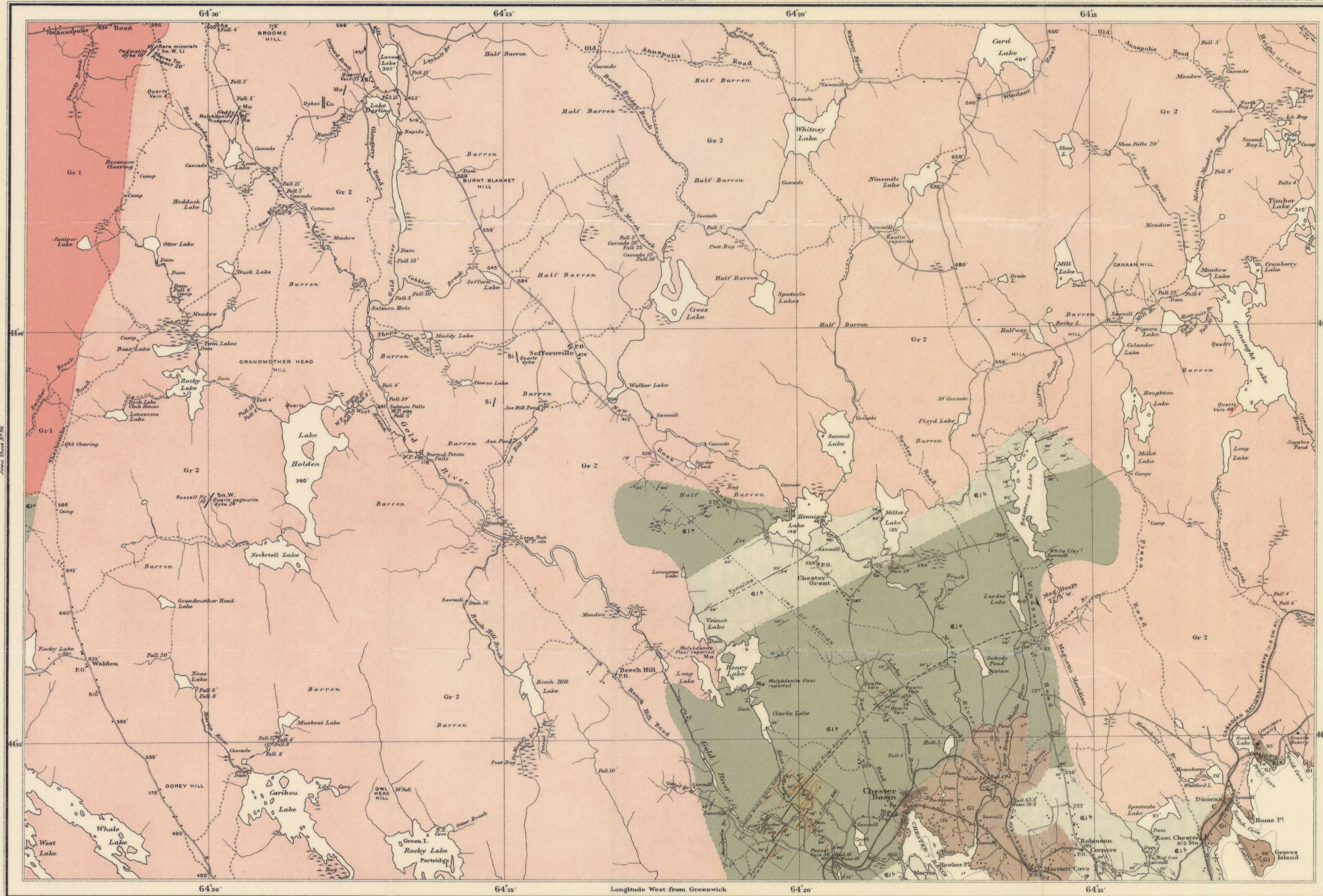
Church

Cemetery

610 Elevations in feet above sea level

REFERENCES

Geological Sur. Can. Summary Rept. 1901, pp. 217-221
" " " " " 1907, - 79-83
" " " " " 1908, - 154-155
" " " " " 1912, - 384-389
" " " " " Memoir No. 20
Reports Department of Mines, Nova Scotia.



C. O. Seacal, Geographer and Chief Draughtsman.
A. Joanes, Draughtsman.

Publication N° 1981

PROVINCE OF NOVA SCOTIA
Lunenburg County
(Chester Basin Sheet, N° 87)

Scale 1 mile to 1 inch = 8330
By E. R. FARIBAULT

Sources of Information
Geology and surveys by E. R. Faribault, 1901-2-3-7-8
Contour lines from Admiralty Charts.
Compilation by E. R. Faribault, assisted by A. S. Jones

Chester Basin

NE 1/2 203118 DE TV BISTOINSORE
MOI 10 BE LUKEN KNOW FISHERIA

1981