

CANADA
DEPARTMENT OF MINES
GEOLOGICAL SURVEY BRANCH

HON. W. TEMPLEMAN, MINISTER; A. P. LOW, DEPUTY MINISTER;
R. W. BROCK, ACTING DIRECTOR.

1908

ELMSDALE SHEET N° 66

Joina Sheet N° 65

Joina Sheet N° 67

Index to colours and signs

Carboniferous
G₁ Carboniferous Limestone (Windsor Series)

Devonian
F Not subdivided

Lower Cambrian
(Gold-Bearing Series)
C₁^a Slate Division
C₁^b Quartzite (White) Division

Geological boundaries
Anticline
Syncline
Roads
Wood Roads

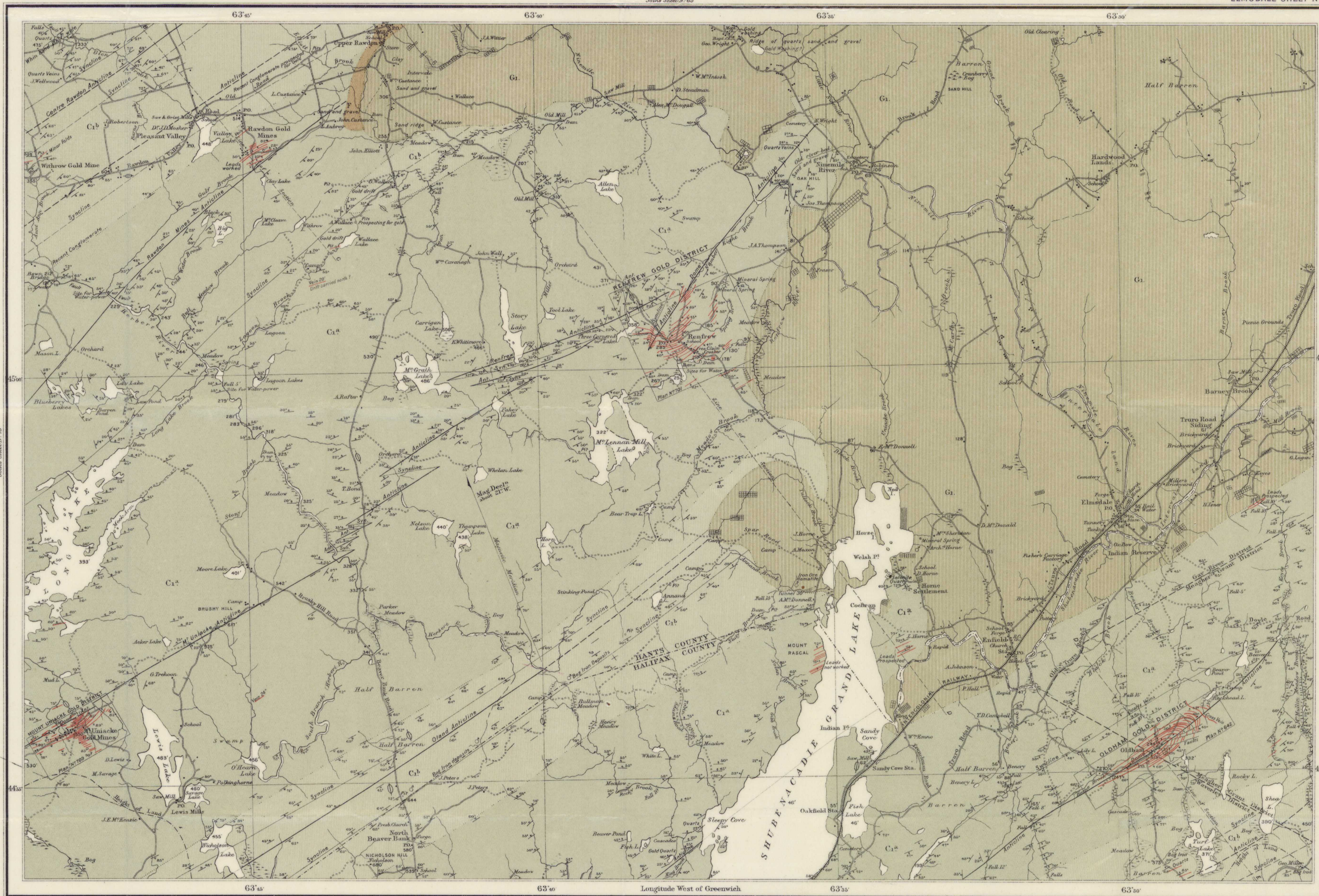
Dip of Anticline
Dip and Strike
Vertical Strata
Horizontal Strata
Glacial Strata
Quartz Veins
Quarry
60 Height above Sea-level

REFERENCES

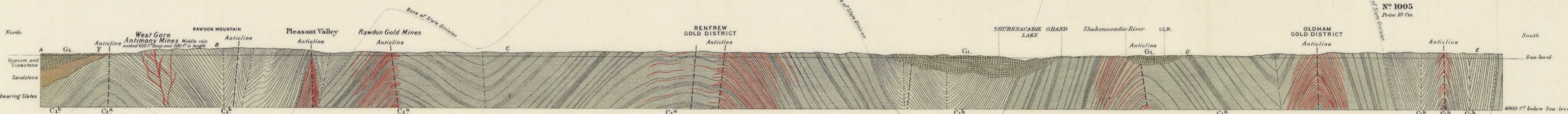
Renfrew Gold District.
Plan N° 701, scale 500 feet to one inch.
Annual Report of the Geological Survey,
Vol. XL, 1906, pp. 169-175, A.

Mount Unishko Gold District.
Plan N° 705, scale 250 feet to one inch.
Section of West Lake Mine, N° 649, Summary
Reports 1903, pp. 102 and 104, Annual Reports,
Vol. XL, 1906, pp. 175-180, A and Vol. XLV, 1907, 3, p. 192, A.

Oldham Gold District.
Plan N° 642, scale 500 feet to one inch.
Annual Report, Vol. XL, 1902, 3, p. 191, A.



C. O. Senecal, B.A.Sc., Geographer and Chief Draftsman.



SECTION ON LINE AB-BC-CD-DE
Horizontal and Vertical Scales 1 mile to 1 inch.
AB is the continuation of section BC on sheet N° 65.

PROVINCE OF NOVA SCOTIA
Hants and Halifax Counties
(Elmsdale Sheet, N° 66)

Scale 1 mile to 1 inch - 63,360

By
E. R. FARIBAUT, B.A.Sc.

Sources of Information
Topography and Geology from original surveys by E. R. Faribault,
assisted by J. M. G. Crockett, A. Cameron, D. V. E. Macdonald, and M. H. L. Lewis.
Compilation by E. R. Faribault, O. G. Silliman, and E. G. Farrow.

N° 1005
Price 20 Cts.

Elmsdale

1005

This map has been produced from a scanned version of the original map
Reproduction par numérisation d'une carte sur papier