

NOTES

The area is 35 miles northeast of the town of Schéfferville and is readily reached by a local bus line... Lake area is 35 miles northeast of the town of Schéfferville and is readily reached by a local bus line...

The northwestern part of the area is characterized by a linear pattern of rather high rocky ridges, the highest parts of which lie about 800 feet above the main drainage... The northwestern part of the area is characterized by a linear pattern of rather high rocky ridges...

The Doublet Group volcanic rocks (1) consist chiefly of fine-grained, rusty weathering, non-porphyrific meta-basalt flows varying from light to dark... The Doublet Group volcanic rocks (1) consist chiefly of fine-grained, rusty weathering, non-porphyrific meta-basalt flows...

The meta-gabbro (3a, 3b) varies from medium to coarse grained and occurs in layers from a few feet to hundreds of feet... The meta-gabbro (3a, 3b) varies from medium to coarse grained and occurs in layers from a few feet to hundreds of feet...

Large areas of obviously Doublet Group rocks along the eastern border of the Trough schistose, exhibit a generally higher grade of metamorphism than elsewhere, and are now fine grained, hornblende-chlorite schists... Large areas of obviously Doublet Group rocks along the eastern border of the Trough schistose, exhibit a generally higher grade of metamorphism...

More highly metamorphosed and metasomatized rocks roughly equivalent in age to rocks of the Labrador Trough... More highly metamorphosed and metasomatized rocks roughly equivalent in age to rocks of the Labrador Trough...

The hornblende granitoid gneiss grades by decrease in hornblende and increase in the number of oligoclase... The hornblende granitoid gneiss grades by decrease in hornblende and increase in the number of oligoclase...

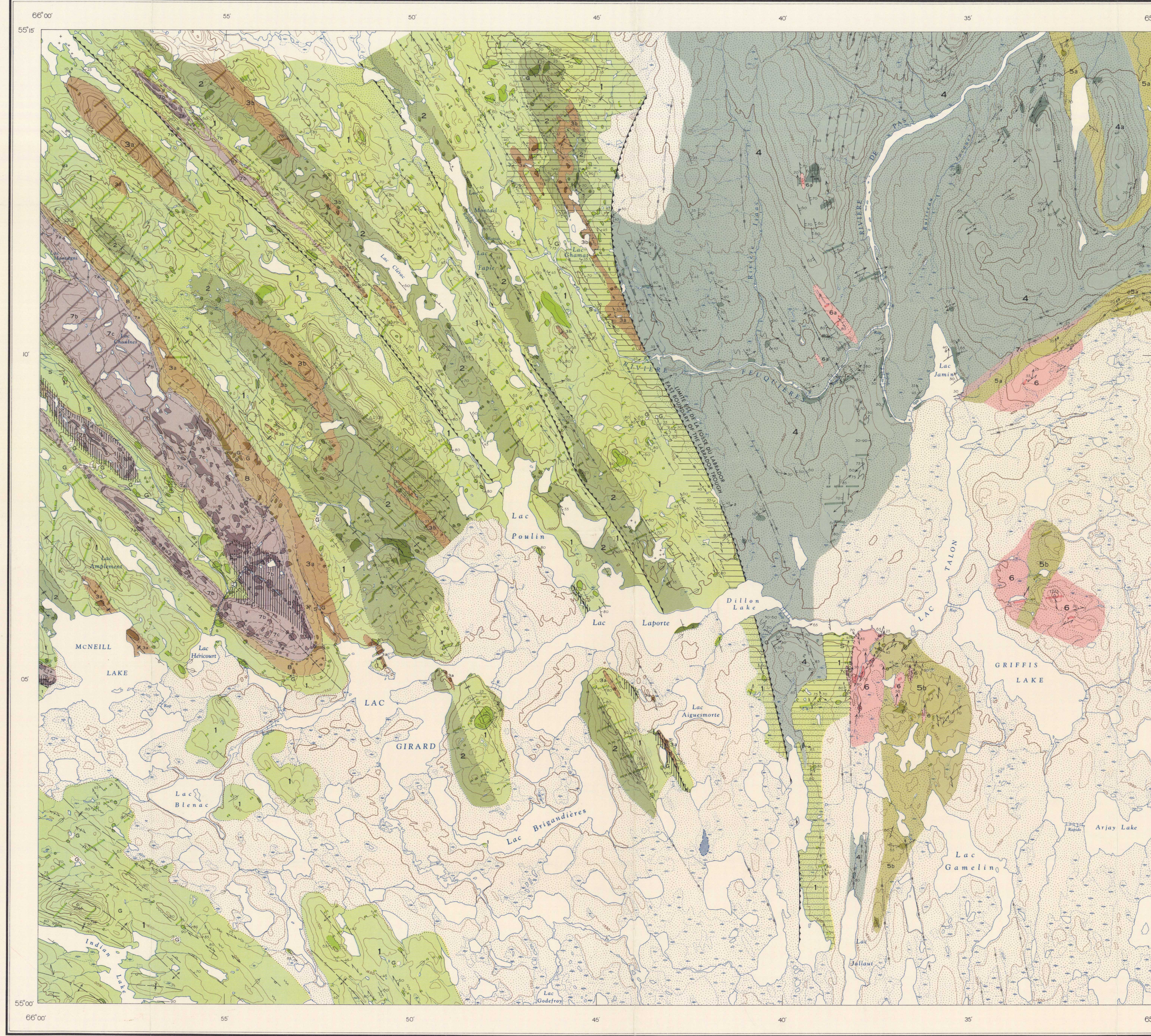
LEGEND

Table with 3 columns: PROTÉROZOÏQUE, GROUPE DOUBLET (1-3), LAPONTE COMPLEX (4-6). Rows describe various geological units like Metagabbro, Doublétt Group, Laponte Complex, and various schists and gneisses.

Zones of intense metamorphism: talc, carbonate, and chlorite formed in situ... Zones of intense metamorphism: talc, carbonate, and chlorite formed in situ...

Horizontal control point... Point géologique... Horizontal control point... Point géologique...

Base-map compiled by the Survey and Mapping Branch... Base-map compiled by the Survey and Mapping Branch...



LÉGENDE

Legend table in French with 3 columns: PROTÉROZOÏQUE, GROUPE DOUBLET (1-3), LAPONTE COMPLEX (4-6). Rows describe geological units and metamorphic zones.

Notas: Las zonas sombreadas muestran los alineamientos rocosos o los zonas de metamorfismo intenso... Notas: Las zonas sombreadas muestran los alineamientos rocosos o los zonas de metamorfismo intenso...

Puntos de control horizontal... Punto geológico... Puntos de control horizontal... Punto geológico...

Mapa base compilado por el Servicio de Muestreo y Mapeo... Mapa base compilado por el Servicio de Muestreo y Mapeo...

NOTICE EXPLICATIVE

The region to the study is situated 35 miles to the north-east of Schéfferville and is readily accessible by a local bus line... The region to the study is situated 35 miles to the north-east of Schéfferville and is readily accessible by a local bus line...

The Doublet Group volcanic rocks (1) consist chiefly of fine-grained, rusty weathering, non-porphyrific meta-basalt flows... The Doublet Group volcanic rocks (1) consist chiefly of fine-grained, rusty weathering, non-porphyrific meta-basalt flows...

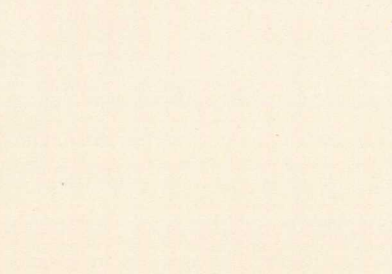
The meta-gabbro (3a, 3b) varies from medium to coarse grained and occurs in layers from a few feet to hundreds of feet... The meta-gabbro (3a, 3b) varies from medium to coarse grained and occurs in layers from a few feet to hundreds of feet...

Large areas of obviously Doublet Group rocks along the eastern border of the Trough schistose, exhibit a generally higher grade of metamorphism... Large areas of obviously Doublet Group rocks along the eastern border of the Trough schistose, exhibit a generally higher grade of metamorphism...

More highly metamorphosed and metasomatized rocks roughly equivalent in age to rocks of the Labrador Trough... More highly metamorphosed and metasomatized rocks roughly equivalent in age to rocks of the Labrador Trough...

The hornblende granitoid gneiss grades by decrease in hornblende and increase in the number of oligoclase... The hornblende granitoid gneiss grades by decrease in hornblende and increase in the number of oligoclase...

Map title: MAP 1121A CARTE GÉOLOGIE-GEOLOGIE GRIFFIS LAKE NEW QUEBEC-NOUVEAU-QUÉBEC. Includes scale and logo.



Handwritten number: 1121A

This map has been produced from a scanned version of the original map. Reproduction par numérisation d'une carte sur papier.