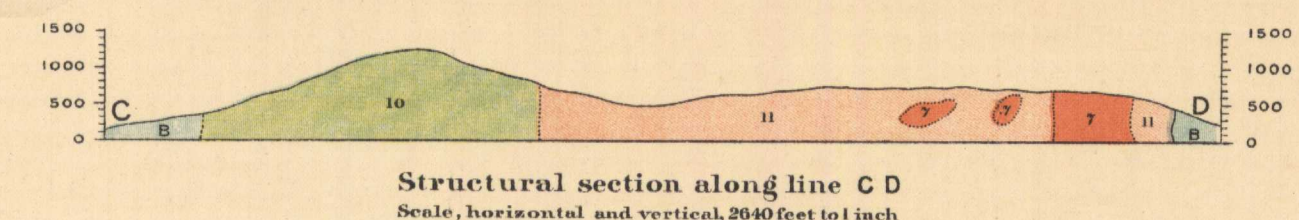
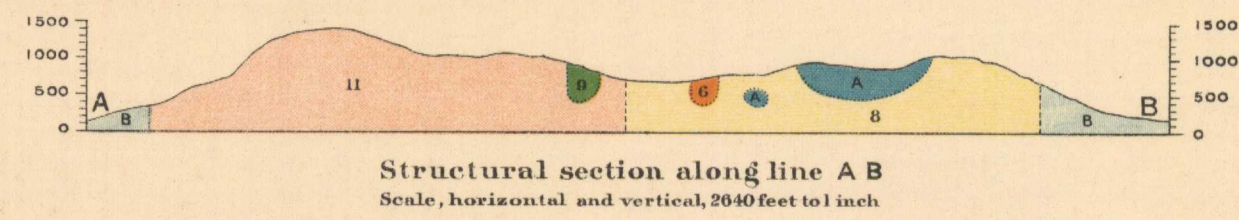


Canada  
Department of Mines

HON. L. CODERRE, MINISTER, A. P. LOW, DEPUTY MINISTER.

GEOLOGICAL SURVEY  
R. W. BROCK, DIRECTOR.



GEOLOGY

OUTLINE MAP

- LEGEND**
- Sedimentary**
- B Hornstone
  - A Limestone and marble
- Igneous**
- 11 / 11 Essexite (with yamaskite at Rougemont)
  - 10 Rougemontite
  - 9 Rouvillite
  - 8 Nephelite-sodalite syenite
  - 7 / 7 Yamaskite
  - 6 Tawite
  - 5-3 Dyke (3 - composite, 4 - nephelite syenite, 3 - tingualite)
  - 2-1 Sheet (2 - apfite, 1 - tingualite)
- Symbols**
- Geological boundary (position determined)
  - Geological boundary (position approximate)
  - Geological boundary (position assumed)

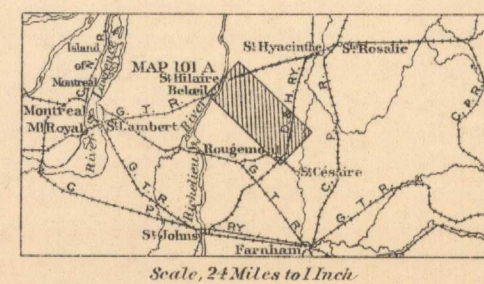
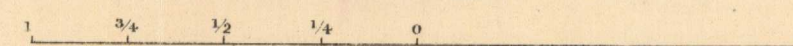


C.O. Sénécal, Geographer and Chief Draughtsman

MAP 101A  
(Issued 1914)

ST HILAIRE AND ROUGEMONT MOUNTAINS, ROUVILLE AND ST HYACINTHE COUNTIES, QUEBEC,

Scale of Miles



To accompany Memoir by J.J. O'Neill

NOT TO BE TAKEN FROM LIBRARY  
NE PAS SORTIR DE LA BIBLIOTHÈQUE

