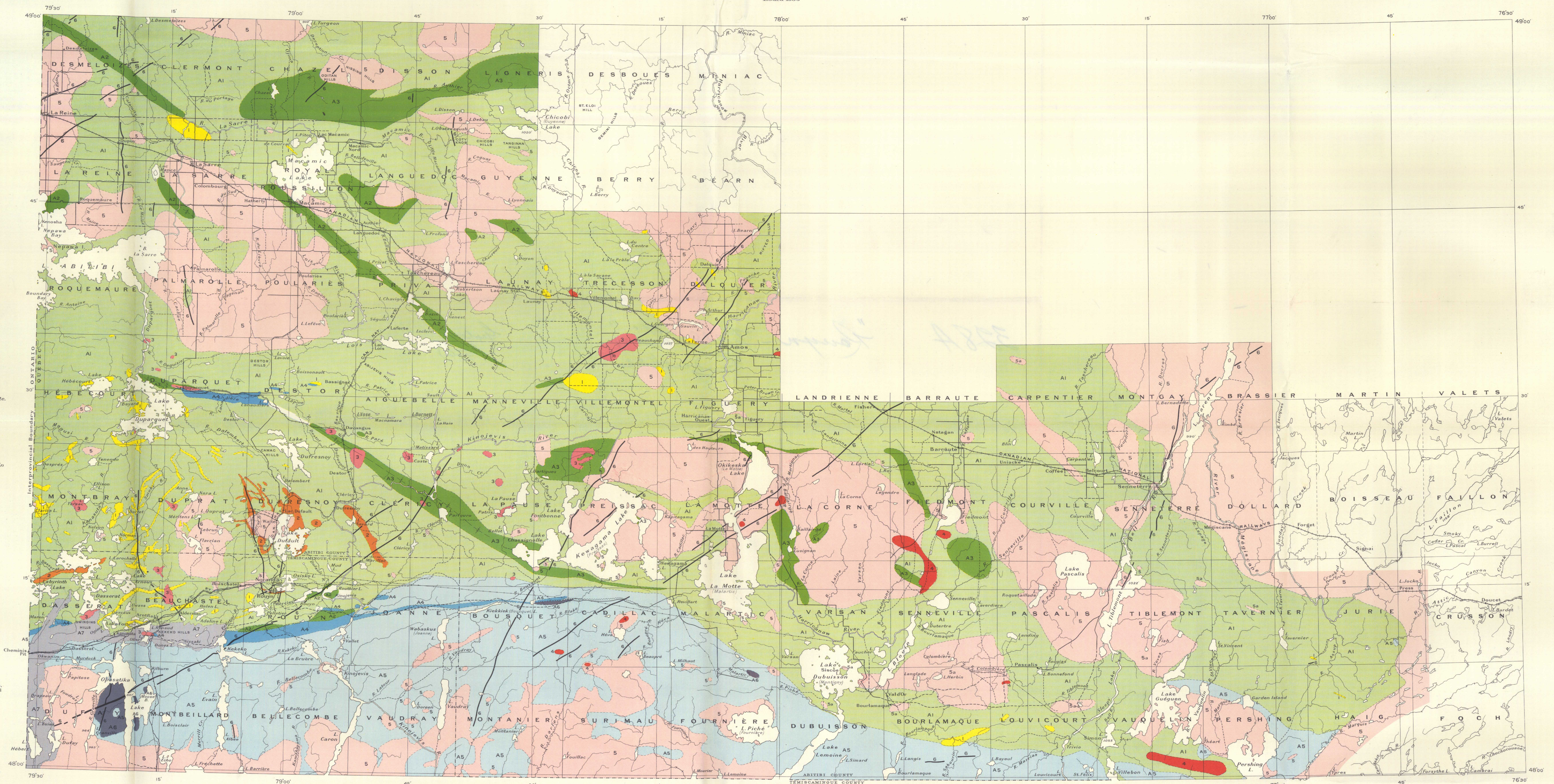
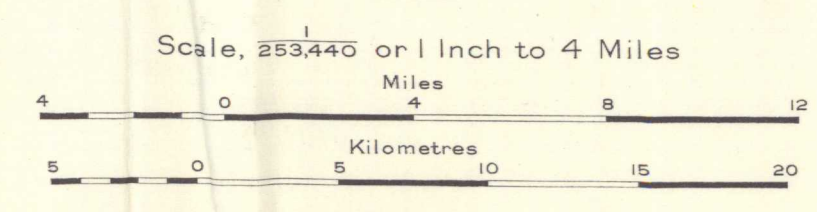


LEGEND

- PROTEROZOIC (LATE PRECAMBRIAN)**
- COBALT SERIES**
- A7 Conglomerate with some greywacke, arkose and slate
- POST-TIMISKAMING**
- 6 Olivine gabbro, quartz gabbro (some dykes may be post-Cobalt)
 - 5 Granite, syenite, granodiorite (5a) and allied rocks; possibly not all of one age
 - 4 Serpentine, peridotite, amphibolite
 - 3 Quartz porphyry, syenite porphyry; some may be pre-Timiskaming
 - 2 Quartz diorite in places grading into granite
 - 1 Quartz diorite
- ARCHAEO (EARLY PRECAMBRIAN)**
- TIMISKAMING**
- A6 Altered basic lava
 - A5 Mainly greywacke and quartzite, in part altered to mica schist, some conglomerate, lava, and small intrusive bodies
 - A4 Conglomerate with some interbedded greywacke
- KEEWATIN**
- A2, A3 Tuff, breccia and other sediments; bodies marked A3 may be post-Kewatin
 - A1 Basalt, andesite, dacite, and rhyolite variously altered and in part changed to schist, etc.; minor amounts of tuff and small intrusive bodies
- Geological boundary**
- Fault (defined, approximate)
 - Synclinal axis
 - Road
 - Road not well travelled
 - Trail or portage
 - Power transmission line
 - Rapid or fall
- SOURCES OF INFORMATION**
- Geology from surveys by the Geological Survey of Canada; and the Bureau of Mines, Quebec.
- Base map from surveys by the Department of Lands and Forests, Quebec; the Geological Survey of Canada; and the Topographical and Air Survey Bureau, Department of the Interior.



MAP 328 A
 (PUBLICATION No. 2404)
ROUYN-BELL RIVER AREA
 ABITIBI AND TÉMISCAMINGUE COUNTIES
 QUEBEC



NOT TO BE TAKEN FROM LIBRARY
 NE PAS SÉPARER DE LA BIBLIOTHÈQUE

328A