

Canada
Department of Mines

HON. W. A. GORDON, MINISTER; CHARLES CAMBELL, DEPUTY MINISTER.

GEOLOGICAL SURVEY
W. H. COLLINS, DIRECTOR.

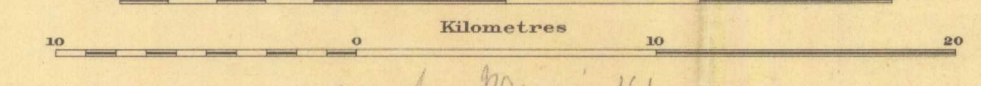
Issued 1931

MAP 271A

ROUYN-HARRICANAW AREA
ABITIBI AND TÉMISCAMINGUE COUNTIES

QUEBEC

Scale: 25,000 or 1 Inch to 4 Miles



Index to One Inch to One Mile sheets issued, or in course of preparation, by the Geological Survey of Canada. The limits of these sheets are indicated on the map-area by intervals of 30' of longitude, and 15' of latitude.

DERMEOISES (in preparation)	MAKAMIK (in preparation)	DESBQUES (in preparation)	
PALMAROLLE (in preparation)	TASCHEREAU (in preparation)	AMOS (in preparation)	
MAP 1887 DUPARQUET	MAP 2085 CLÉRICY	MAP 1884 LA MOTTE	MAP 2084 FIEDMONT
MAP 2404 OPASATIKA	MAP 2087 KINJEVIS	MAP 1884 FOURNIÈRE	MAP 2284 DUBUISSON

*Map 1887 resurveyed and in preparation.
*Map 2085 revised and in preparation.
*Map 2087 revised and in preparation.

INDEX TO MINES AND PROSPECTS
REFERRED TO IN MEMOIR

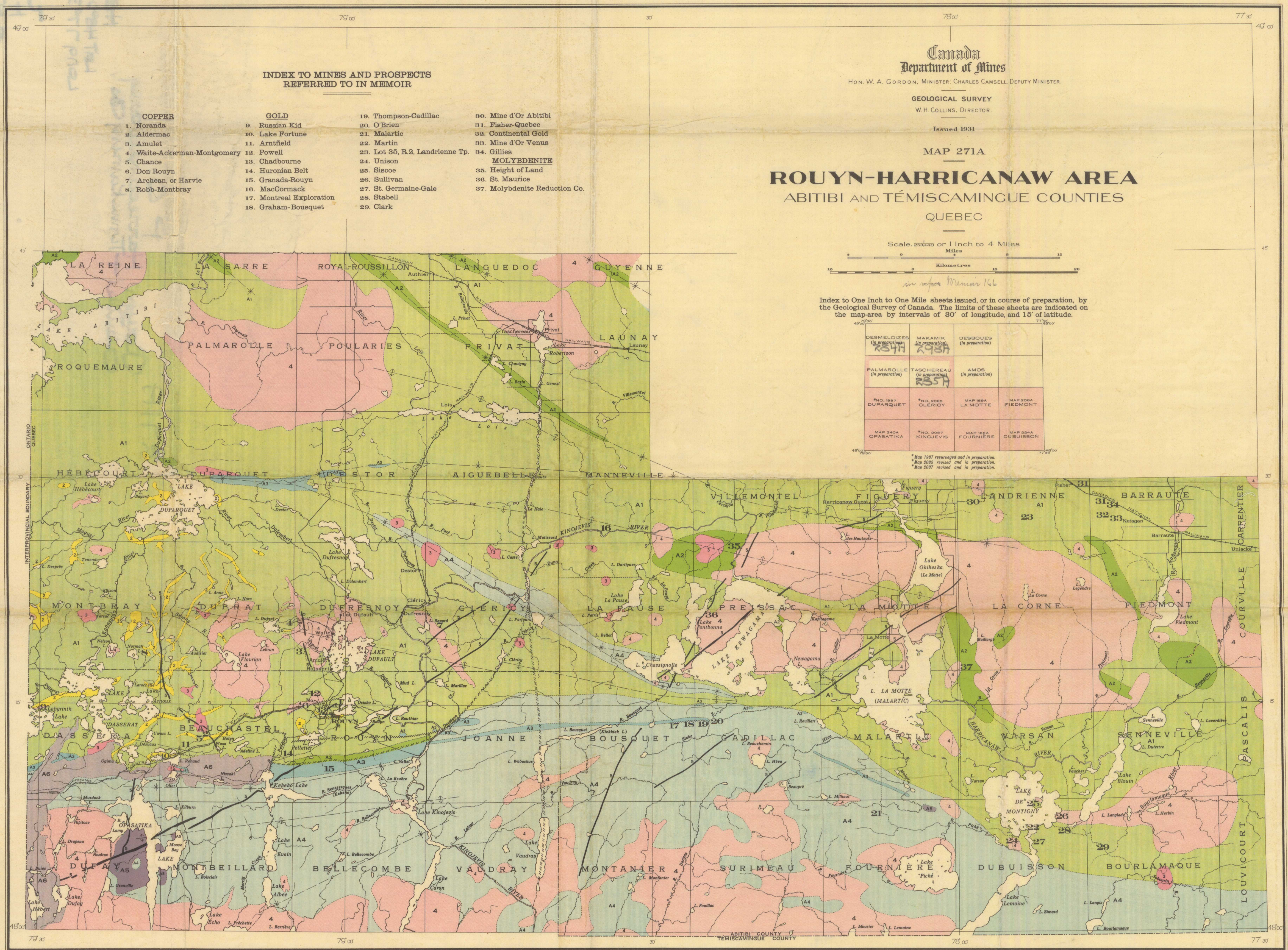
- | | | | |
|------------------------------|--------------------------|---------------------------------|-------------------------------|
| COPPER | GOLD | 19. Thompson-Cadillac | 30. Mine d'Or Abitibi |
| 1. Noranda | 9. Russian Kid | 20. O'Brien | 31. Fisher-Quebec |
| 2. Aldermac | 10. Lake Fortune | 21. Malartic | 32. Continental Gold |
| 3. Amulet | 11. Arntfield | 22. Martin | 33. Mine d'Or Venus |
| 4. Waite-Ackerman-Montgomery | 12. Powell | 23. Lot 35, R.2, Landrienne Tp. | 34. Gillies |
| 5. Chance | 13. Chadbourne | 24. Unison | MOLYBDENITE |
| 6. Don Rouyn | 14. Huronian Belt | 25. Siscoe | 35. Height of Land |
| 7. Archean, or Harvie | 15. Granada-Rouyn | 26. Sullivan | 36. St. Maurice |
| 8. Robb-Montbray | 16. MacCormack | 27. St. Germaine-Gale | 37. Molybdenite Reduction Co. |
| | 17. Montreal Exploration | 28. Stabell | |
| | 18. Graham-Bousquet | 29. Clark | |

LEGEND

- COBALT SERIES**
- A6 Conglomerate, with some greywacke, arkose, and slate
- PRE-HURONIAN INTRUSIVES**
- 5 LATER GABBRO
Olivine gabbro and quartz gabbro
 - 4 Granite, granodiorite and allied rocks
 - 3 Syenite porphyry and porphyritic syenite
 - 2 "OLDER GABBRO"
Quartz diorite
- TIMISKAMING SERIES**
- A5 Altered basic lava
 - A4 Greywacke and quartzite mainly, largely altered to mica schist; some conglomerate, some small sills of amphibolite
 - A3 Conglomerate, with some interbedded greywacke
- KEWATIN SERIES**
- A2 Tuffs and other sediments
 - A1 Basalts, andesites, dacites, rhyolites, with some minor amounts of interbedded tuffs and small masses of basic intrusives

- Geological boundary
- Fault (defined and assumed)
- Anticlinal axis
- Synclinal axis
- 3 Location of mine or prospect
- Road
- Trail or portage
- Rapid or fall

SOURCES OF INFORMATION
Geology from surveys by the Geological Survey of Canada. Base map from surveys by the Department of Lands and Forests, Quebec; the Geological Survey of Canada; and by Topographical Surveys, Department of the Interior.



To accompany Memoir by H.C. Cooke, W.F. James, and J.B. Mawdsley.

Publication No 2275

NOT TO BE TAKEN FROM LIBRARY
NE PAS SORTIR DE LA BIBLIOTHÈQUE



271 A