

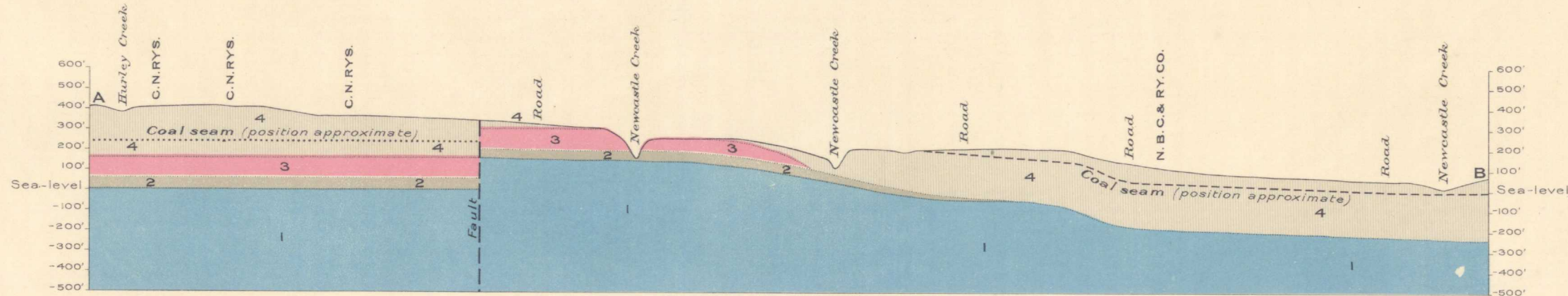
Canada
Department of Mines

HON. R. B. BENNETT, ACTING MINISTER; CHARLES CAMSELL, DEPUTY MINISTER

GEOLOGICAL SURVEY

W. H. COLLINS, DIRECTOR

Issued 1926



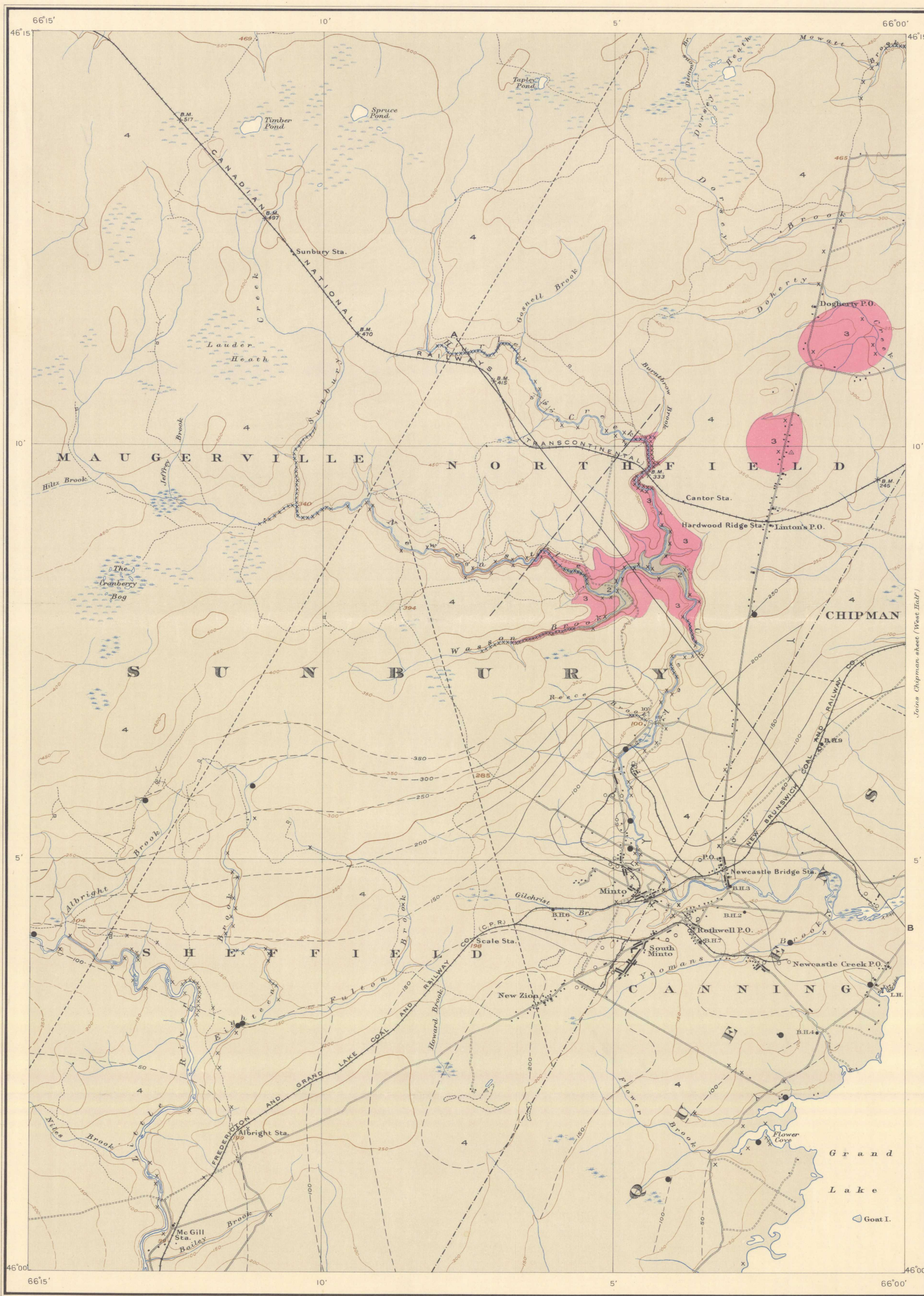
Structural section along line A-B
Horizontal scale, 1 inch to 1 mile
Vertical exaggeration, 8 times

LEGEND

- PALAEZOIC**
- PENNSYLVANIAN**
 - 4 GRAND LAKE FORMATION (sandstone, conglomerate, shale, coal)
 - PENNSYLVANIAN (?)**
 - 3 BASALTIC EXTRUSIVE
 - PENNSYLVANIAN (?)**
 - 2 NEWCASTLE CREEK FORMATION (red and grey quartzose conglomerate etc.)
 - PRE-PENNSYLVANIAN**
 - 1 COAL CREEK FORMATION (slate, sandstone)
- Coal outcrop
 - × Rock outcrop
 - ▭ Areas of coal seam stripped and coal excavated
 - ▭ Basalt
 - Structure contours (showing elevation and structure of coal seam, datum is mean sea-level)
 - Shaft
 - Y Adit
 - B.H. Bore-hole
 - ↗ Dip and strike

LEGEND

- ▭ Building
- ▭ Road
- ▭ Road not well travelled
- ▭ Trail or logging road
- ▭ Railway
- ▭ Bridge
- ⊙ Church
- ⊙ School
- ⊙ Post office
- ⊙ Abandoned camp-site
- ⊙ Cemetery
- ▭ Coal stripping ground
- ⊙ Lighthouse
- ⊙ Triangulation station
- ⊙ Bench mark
- ▭ County boundary
- ▭ Parial boundary (approximate)
- ▭ Marsh
- ▭ Heath
- ▭ Contour
- 465 Height in feet



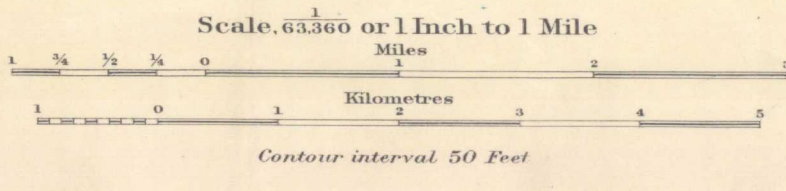
Johns Chipman sheet (West Half)

Elevations referred to Mean sea-level, based on precise levelling by the Geodetic Survey of Canada. Approximate magnetic declination, 23°30' West.

To accompany Memoir by W.S. Dyer

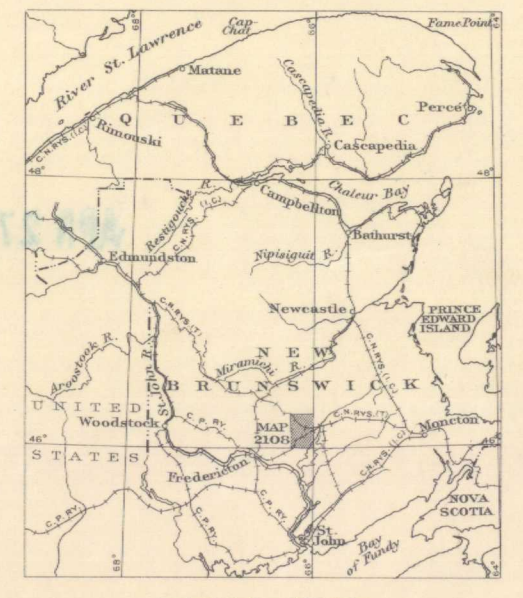
Publication No 2108

MINTO SHEET
(EAST HALF)
SUNBURY AND QUEENS COUNTIES
NEW BRUNSWICK



GEOLOGY
Geology by W.S. Dyer, 1923.

TOPOGRAPHY
W.H. Boyd, Chief Topographical Engineer.
Survey and topography by A.G. Hamilton, 1922.
Triangulation control by S.C. McLean, 1925, based on primary triangulation by the Geodetic Survey of Canada.



Scale, 1 inch to 100 Miles

NOT TO BE TAKEN FROM LIBRARY
NE PAS SORTIR DE LA BIBLIOTHÈQUE

2108

Minto
5.1.4
A. Geol.