

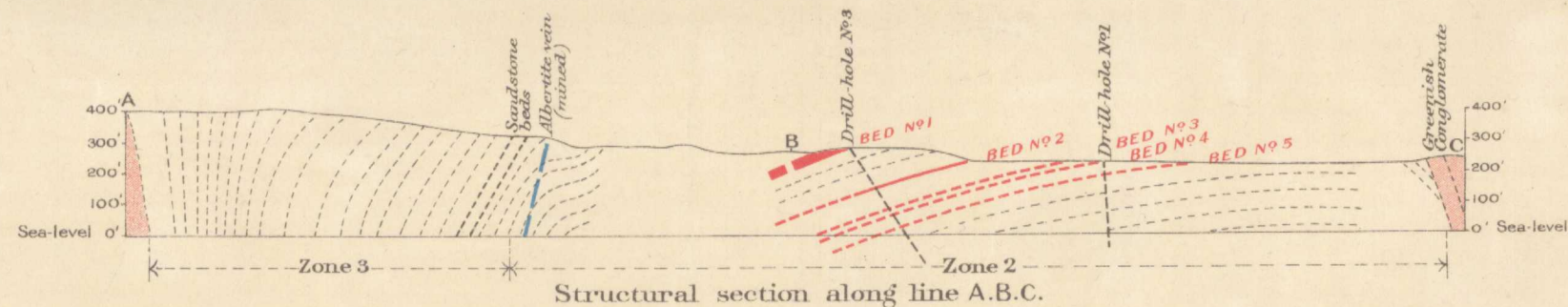
Canada Department of Mines

SIR JAMES A. LOUGHEED, MINISTER; CHARLES CAMSELL, ACTING DEPUTY MINISTER.

GEOLOGICAL SURVEY

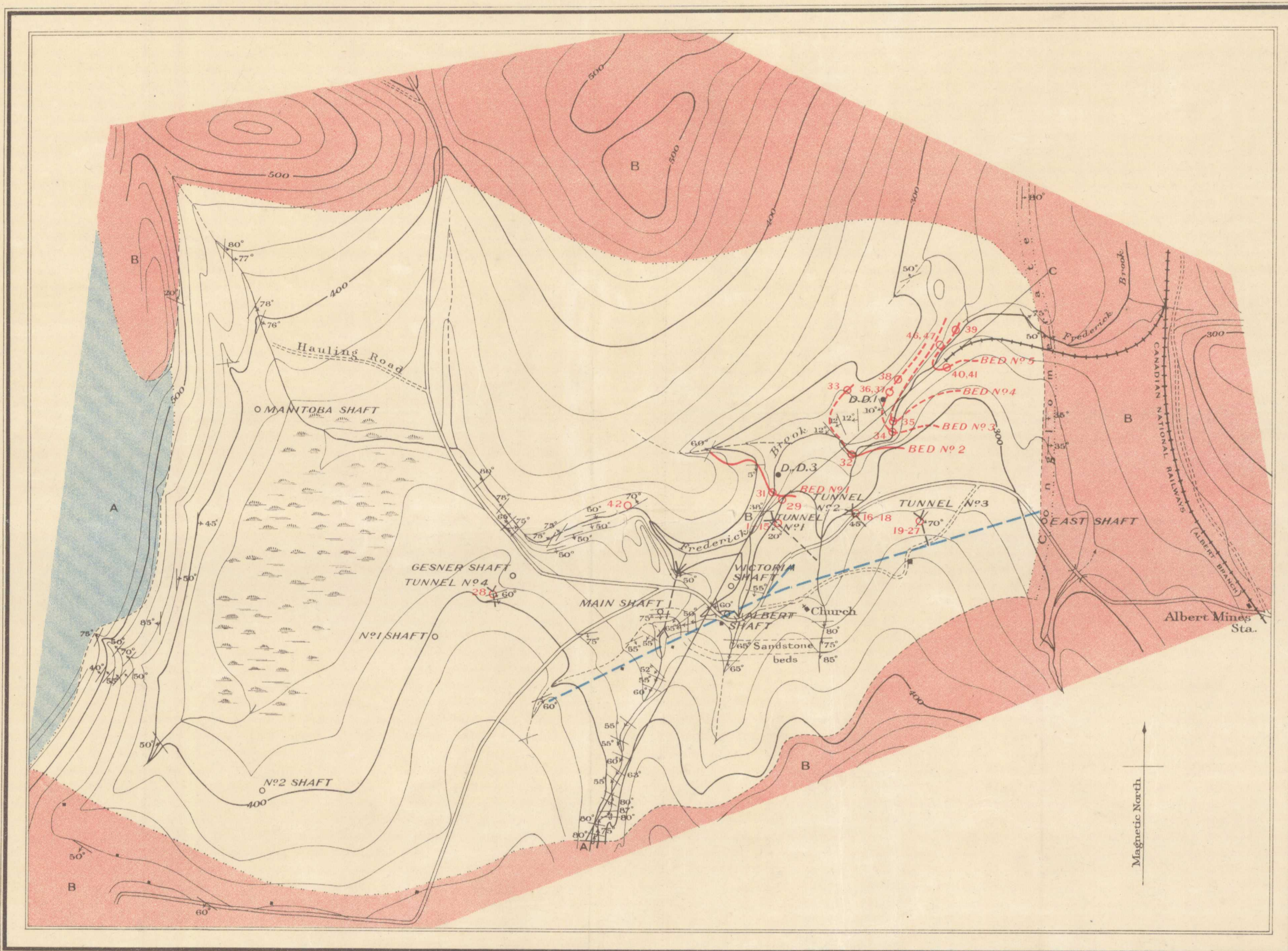
W. H. COLLINS, DIRECTOR.

Issued 1920



LEGEND

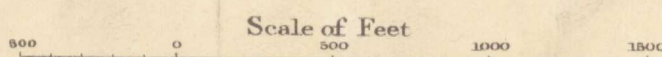
- B
Strata younger than Albert series
 - Albert series
 - A
Strata older than Albert series
 - Symbols**
 - Geological boundary (position approximate)
 - Geological boundary (position assumed)
 - Dip and strike
 - Vertical strata
 - Overturned strata
 - Main vein of Albertite (general trend)
 - Rich oil-shale bed
 - O 32 Locality from which oil-shale sample was taken for analysis; with index number giving text reference.
 - Tunnel (entrance and underground extent)
 - D.D. Diamond drill-hole
- Approximate magnetic declination 24° 50' West.



C. O. Sénécal, Geographer and Chief Draughtsman.
A. Joanes, Draughtsman.

Publication No. 1833

ALBERT MINES OIL-SHALE AREA, ALBERT COUNTY, NEW BRUNSWICK.



Geology and topography by W. J. Wright, 1919.

To accompany Memoir by W. J. Wright.

Albert Mines
5.1.4
A, Ged.

PROPERTY OF LIBRARY
GEOLOGICAL SURVEY OF CANADA
601 Booth St., Ottawa
LENT TO *Shelton* PLEASE RETURN
DATE *1920*

NOT TO BE TAKEN FROM LIBRARY
NE PAS SORTIR DE LA BIBLIOTHÈQUE

1833