

CANADA
DEPARTMENT OF MINES AND RESOURCES
MINES AND GEOLOGY BRANCH
BUREAU OF GEOLOGY AND TOPOGRAPHY

MAP 828A
WINDSOR-SARNIA
ESSEX, KENT AND LAMBTON COUNTIES
ONTARIO

Scale, 1/4 inch to 4 Miles
Approximate magnetic declination, 3° to 5° West.

LEGEND

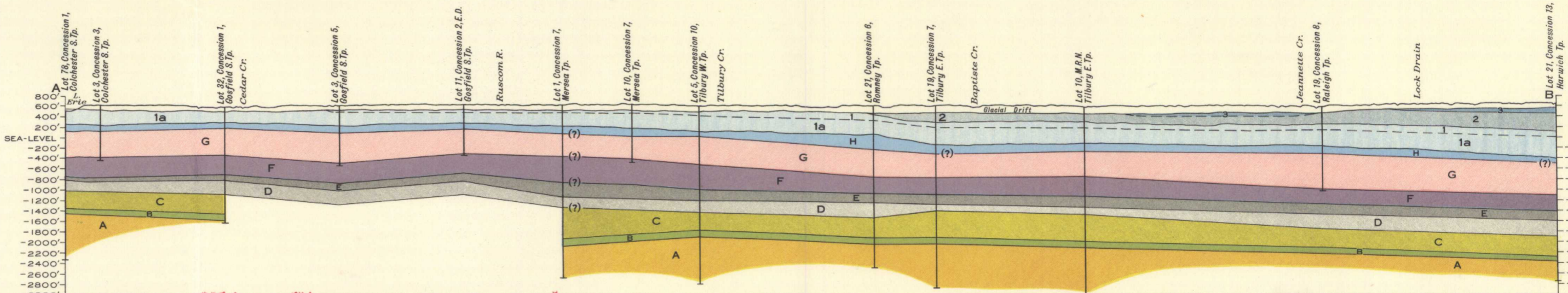
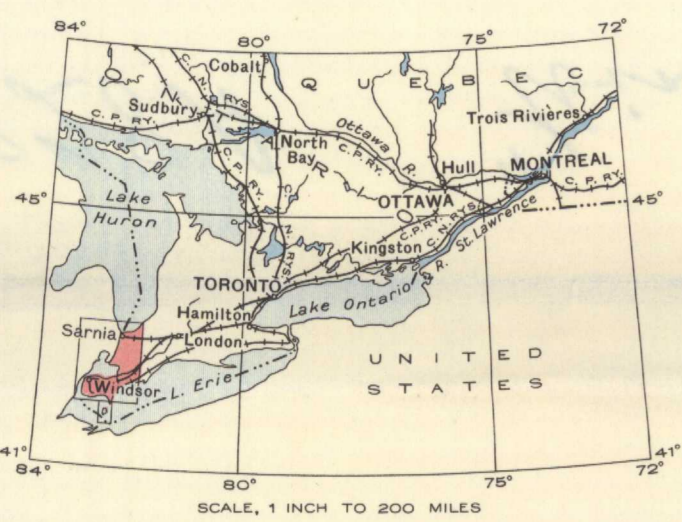
- DEVONIAN AND (?) MISSISSIPPIAN**
- 3 KETTLE POINT FORMATION: black fissile shale; some green shale
- DEVONIAN**
- 2 HAMILTON FORMATION: soft, blue and grey shale and grey limestone
 - 1 NORFOLK FORMATION: grey and buff limestone, chert, frosted sand grains; 1a. PRE-NORFOLK BEDS: brown and buff magnesian limestone and limestone, calcareous sandstone, sandstone, chert

SUBSURFACE FORMATIONS
(Structure-section only)

- SILURIAN**
- H BERTIE-AKRON
 - G SALINA
 - F GUELPH and LOCKPORT
 - E ROCHESTER, CLINTON, and MEDINA
- ORDOVICIAN**
- D QUEENSTON
 - C MEAFORD-DUNDAS
 - B BILLINGS
 - A TRENTON and PRE-TRENTON

- Bedding (inclined)
- Rock outcrop
- Road well travelled
- County boundary
- Township boundary
- Indian Reserve boundary
- Quarry
- Wharf
- Drainage ditch
- Marsh
- Contours (interval 100 feet)
- Height in feet above mean sea-level

Geology by J.F. Caley, 1941.
Base-map compiled by the Topographical Survey, 1942, from Federal Government maps published in 1924, 1925, 1925, 1936, 1939 and 1940. Cartography by the Drafting and Reproducing Division, 1944.



NOT TO BE TAKEN FROM LIBRARY
NE PAS SORTIR DE LA BIBLIOTHÈQUE

Structure section along line A-B
HORIZONTAL SCALE, 1 INCH TO 4 MILES
VERTICAL SCALE, 1 INCH TO 200 FEET

828A

5-1.7 Ont. Windsor-Sarnia.
A, Geol. Scale - 4 mi to 1" 1945