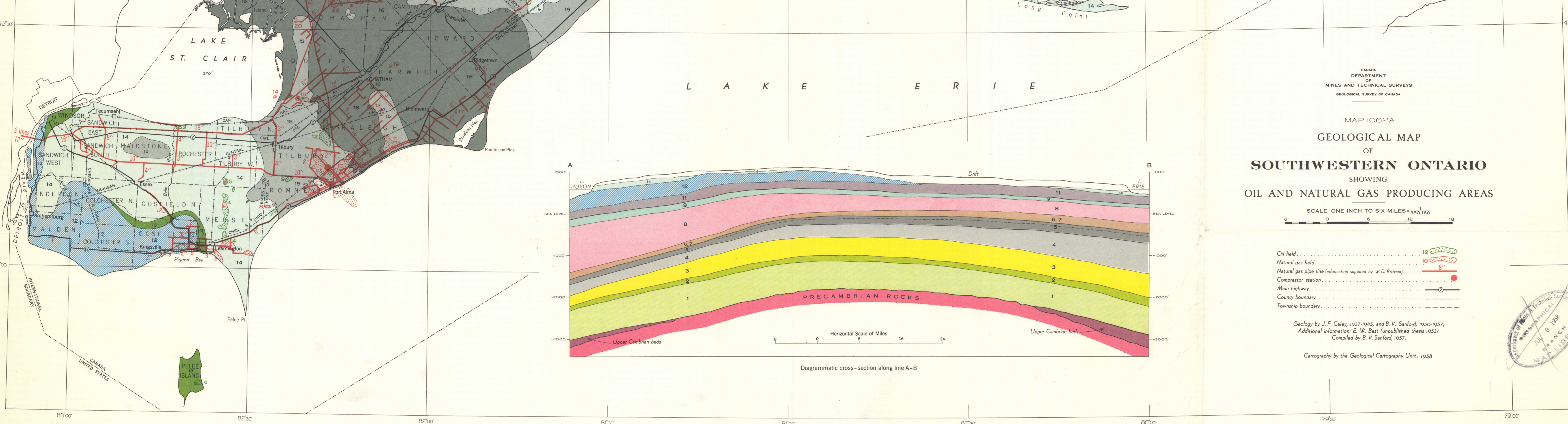


- LEGEND**
- MISSISSIPPIAN**
- 17 PORT LAMBTON FORMATION: grey to black shale and grey sandstone
- DEVONIAN**
- 16 KETTLE POINT FORMATION: black shale
 - 15 HAMILTON FORMATION: grey shale and argillaceous limestone
 - 14 DELAWARE FORMATION: brown and buff limestone, some chert
 - 13 COLUMBUS FORMATION: grey and buff sandy limestone and dolomite
 - 12 DETROIT RIVER GROUP: brown and buff limestone and dolomite, sandstone
 - 11 BOIS BLANC FORMATION: limestone, dolomite and chert, sandstone
 - 10 ORISKANY FORMATION: grey sandstone
- SILURIAN**
- 9 BASS ISLAND FORMATION: cream and buff dolomite
 - 8 SALINA FORMATION: buff to brown dolomite and limestone; grey dolomitic shale; argillite, pisolite and salt
 - 7 GUELPH FORMATION: cream to buff dolomite
 - 6 LOCKPORT-AMBERLE FORMATION: buff and grey dolomite
 - 5 CLINTON AND CATACT GROUPS: white and grey sandstones, grey shale and buff dolomite
- ORDOVICIAN**
- 4 QUEENSTON FORMATION: red shale
 - 3 MEAFORD-DUNDAS, BLUE MOUNTAIN FORMATIONS: medium to dark grey shale
 - 2 COLLINGWOOD FORMATION: dark grey to black shaly shale
 - 1 TRENTON AND BLACK RIVER GROUPS: limestone



NO. ON MAP	FIELD OR POOL	YEAR OF DISCOVERY	PRODUCING FORMATION	DEPTH (FEET) TO PRODUCE ZONE OR TRAP	TYPE OF STRUCTURE	CUMULATIVE PRODUCTION 1956
1	Midland	1946	Guelph	834-926	Dome	4
2	Belle River	1913	Delaware	110-120	Stratigraphic	2,200 Bbls.
3	Kingsville	1946	Guelph	300-1000	Dome	29,230,000 Bbls.
4	Marion	1902	Salina Guelph	1030-1175	Anticline	23,175 Bbls.
5	Stables	1948	Guelph	1140-1160	Dome	3,370 Bbls.
6	Price Hill	1899	Salina	780-900	Dome	1,100 Bbls.
7	Whitfield	1902	Guelph	1290-1300	Dome	8,100 Bbls.
8	New Wheatley	1900	Delaware	200-270	Anticline	62,000 Bbls.
9	Tilbury	1900	Salina Guelph	2070-2100	Possible structure	276,185,000 Bbls.
10	Tilbury	1900	Salina Guelph	1500-1580	Anticline	18,500,000 Bbls.
11	Fluor	1905	Salina Guelph	2110-2130	Possible structure	1,200,000 Bbls.
12	Fluor	1905	Salina Guelph	1807-1850	Dome	1,000,000 Bbls.
13	Lake St. Clair	1955	Guelph	1390-1405	Biogenic reef	12,310,000 Bbls.
14	Lake St. Clair	1955	Guelph	1390-1405	Biogenic reef	12,310,000 Bbls.
15	Dover	1917	Delaware	3000-3000	Faulted syncline	238,860 Bbls.
16	Kipp	1907	Delaware	360-400	Dome	8,000 Bbls.
17	Kipp	1907	Delaware	1554-1564	Dome	6,000 Bbls.
18	Marquette	1954	Salina	1535-1555	Dome	70,000 Bbls.
19	Electric	1948	Mount Simon	3965-1900	Stratigraphic	17,000 Bbls.
20	Chatham Glen	1949	Salina	1790-1800	Dome	6,990,900 Bbls.
21	Chatham Glen	1949	Salina Guelph	1425-1625	Anticline and dome	5,080,000 Bbls.
22	Leck Cemetery	1936	Delaware	228-604	Dome structure	2,880,400 Bbls.
23	Bothwell-Thamesville	1942	Delaware-Columbus	1400-1600	Dome structure	14,730 Bbls.
24	Dante	1949	Delaware	225-347	Dome	23,200 Bbls.
25	McCraw	1932	Delaware-Columbus	327-352	Dome	23,200 Bbls.
26	Shelburne (alt.)	1898	Salina Guelph	1560-1675	Dome	23,200 Bbls.
27	Shelburne (alt.)	1898	Salina Guelph	1560-1675	Dome	23,200 Bbls.
28	Fluor	1897	Delaware	317-325	Dome	24,500 Bbls.
29	Dover	1921	Salina Guelph	1813-1995	Dome structure	17,120,000 Bbls.
30	Dover	1921	Salina Guelph	1498-1765	Dome and Pinnacle reef	62,825 Bbls.
31	Dover	1921	Salina Guelph	1621-2004	Pinnacle reef	c
32	Somerset	1956	Salina Guelph	2027-1990	Anticline	c
33	East Becher	1948	Guelph	1908-1924	Dome	37,500 Bbls.
34	West Becher	1956	Guelph	1691-1700	Pinnacle reef	745,300 Bbls.
35	Becher	1956	Guelph	1813-2078	Pinnacle reef	980,000 Bbls.
36	Becher	1956	Guelph	1844-2008	Pinnacle reef	865,000 Bbls.
37	Wabun	1951	Guelph	1851-2040	Anticline and reef	14,990,000 Bbls.
38	Wabun	1951	Guelph	1851-2040	Anticline and reef	14,990,000 Bbls.
39	Wabun	1951	Guelph	1851-2040	Anticline and reef	14,990,000 Bbls.
40	Wabun	1951	Guelph	1851-2040	Anticline and reef	14,990,000 Bbls.
41	Wabun	1951	Guelph	1851-2040	Anticline and reef	14,990,000 Bbls.
42	Wabun	1951	Guelph	1851-2040	Anticline and reef	14,990,000 Bbls.
43	Wabun	1951	Guelph	1851-2040	Anticline and reef	14,990,000 Bbls.
44	Wabun	1951	Guelph	1851-2040	Anticline and reef	14,990,000 Bbls.
45	Wabun	1951	Guelph	1851-2040	Anticline and reef	14,990,000 Bbls.
46	Wabun	1951	Guelph	1851-2040	Anticline and reef	14,990,000 Bbls.
47	Wabun	1951	Guelph	1851-2040	Anticline and reef	14,990,000 Bbls.
48	Wabun	1951	Guelph	1851-2040	Anticline and reef	14,990,000 Bbls.
49	Wabun	1951	Guelph	1851-2040	Anticline and reef	14,990,000 Bbls.
50	Wabun	1951	Guelph	1851-2040	Anticline and reef	14,990,000 Bbls.
51	Wabun	1951	Guelph	1851-2040	Anticline and reef	14,990,000 Bbls.
52	Wabun	1951	Guelph	1851-2040	Anticline and reef	14,990,000 Bbls.
53	Wabun	1951	Guelph	1851-2040	Anticline and reef	14,990,000 Bbls.
54	Wabun	1951	Guelph	1851-2040	Anticline and reef	14,990,000 Bbls.
55	Wabun	1951	Guelph	1851-2040	Anticline and reef	14,990,000 Bbls.
56	Wabun	1951	Guelph	1851-2040	Anticline and reef	14,990,000 Bbls.
57	Wabun	1951	Guelph	1851-2040	Anticline and reef	14,990,000 Bbls.
58	Wabun	1951	Guelph	1851-2040	Anticline and reef	14,990,000 Bbls.
59	Wabun	1951	Guelph	1851-2040	Anticline and reef	14,990,000 Bbls.
60	Wabun	1951	Guelph	1851-2040	Anticline and reef	14,990,000 Bbls.
61	Wabun	1951	Guelph	1851-2040	Anticline and reef	14,990,000 Bbls.
62	Wabun	1951	Guelph	1851-2040	Anticline and reef	14,990,000 Bbls.
63	Wabun	1951	Guelph	1851-2040	Anticline and reef	14,990,000 Bbls.
64	Wabun	1951	Guelph	1851-2040	Anticline and reef	14,990,000 Bbls.
65	Wabun	1951	Guelph	1851-2040	Anticline and reef	14,990,000 Bbls.
66	Wabun	1951	Guelph	1851-2040	Anticline and reef	14,990,000 Bbls.
67	Wabun	1951	Guelph	1851-2040	Anticline and reef	14,990,000 Bbls.
68	Wabun	1951	Guelph	1851-2040	Anticline and reef	14,990,000 Bbls.
69	Wabun	1951	Guelph	1851-2040	Anticline and reef	14,990,000 Bbls.
70	Wabun	1951	Guelph	1851-2040	Anticline and reef	14,990,000 Bbls.
71	Wabun	1951	Guelph	1851-2040	Anticline and reef	14,990,000 Bbls.

*Cumulative production for Gas Fields supplied by W. D. Britton, Ontario Fuel Board
 †Cumulative production, not accurately known or not recorded separately
 ‡Cumulative production, no recorded production to date

OIL AND NATURAL GAS PRODUCIVE AREAS, SOUTHWESTERN ONTARIO

CANADA
DEPARTMENT OF
MINES AND TECHNICAL SURVEYS
GEOLOGICAL SURVEY OF CANADA

MAP 1062A
GEOLOGICAL MAP OF SOUTHWESTERN ONTARIO
SHOWING
OIL AND NATURAL GAS PRODUCING AREAS

SCALE: ONE INCH TO SIX MILES (1:396,000)

Oil field (dotted line)
Natural gas field (dashed line)
Natural gas pipe line (information supplied by W.D. Britton) (solid line)
Compressor station (solid circle)
Main highway (solid line with double dashes)
County boundary (dashed line)
Township boundary (dotted line)

Geology by J.F. Carey, 1937-1945, and B.V. Sanford, 1950-1957
Additional information: E.W. Beer (unpublished thesis 1933)
Compiled by B.V. Sanford, 1957

Courtesy by the Geological Survey of Canada, 1958