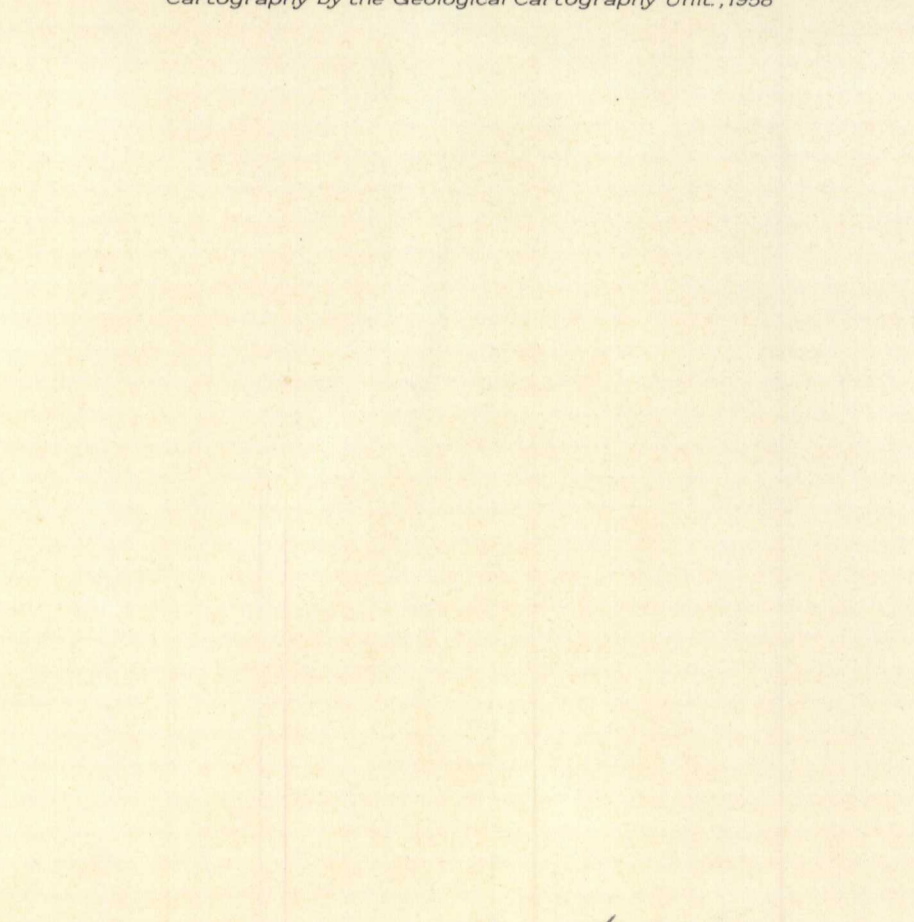


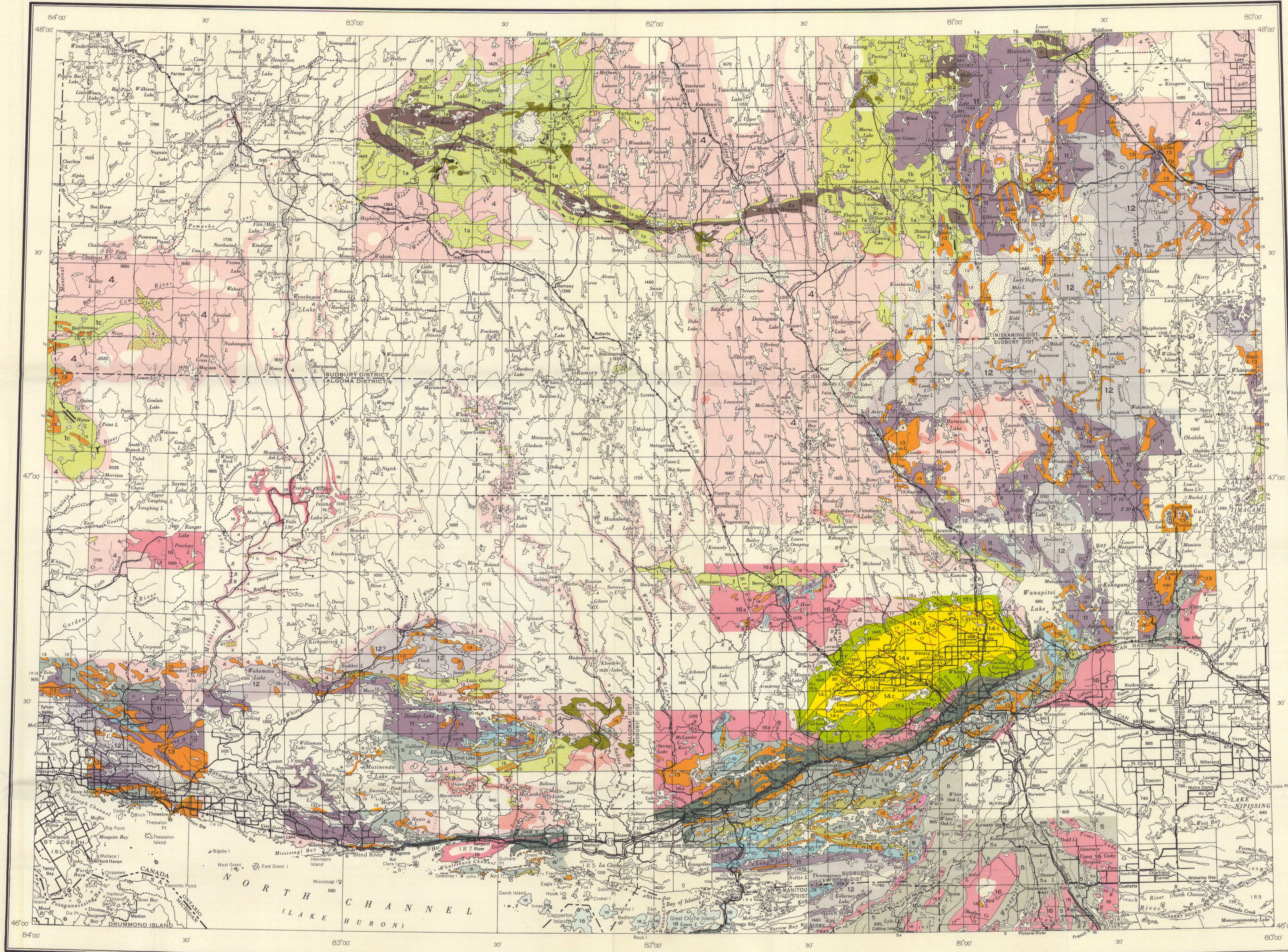
- LEGEND**
- PALEOZOIC**
- ORDOVICIAN**
- 18 COLLINGWOOD FORMATION: shale, BLACK RIVER and TRENTON GROUPS: limestone, shale, sandstone
- KEWEENAWAN**
- 17 Olivine diabase and trap
- 16 Granite, granite-gneiss, and diorite (Killarney, Murray, Creighton, Birch Lake and other granites); may be older than 1516a, includes undifferentiated granite (4)
- 15a quartz diorite; 15b micropegmatite and granophyre; 15c, norite and quartz gabbro (Sudbury Nickel intrusive)
- 14 WHITEWATER GROUP
14a CHELMSFORD FORMATION: arkose; 14b, ONYXIN FORMATION: carbonaceous slate; 14c, ONYXIN FORMATION: agglomerate and tuff, minor rhyolite
- PROTEROZOIC**
- HURONIAN**
- 13 Diabase, gabbro, diorite (includes Nipissing diabase)
13a, THESSALON GREENSTONE: basalt
- COBALL GROUP**
- 12 LORRAIN FORMATION: quartzite, conglomerate
- 11 GOWGANDA FORMATION: conglomerate, greywacke, quartzite, and minor limestone
- BRUCE GROUP (B-10)**
- 10 SERPENT FORMATION: quartzite and argillite
- 9 ESPANOLA FORMATION: calcareous silt and magnesian limestone; BRUCE FORMATION: conglomerate, greywacke, and quartzite
- 8 MISSISSAGI FORMATION: quartzite, arkose, conglomerate, and argillite; RAMSAY LAKE FORMATION: conglomerate, greywacke, and quartzite
- ARCHAEOAN AND/OR PROTEROZOIC**
- 7 MCKIM FORMATION: greywacke, quartzite, conglomerate, slate, mica schist, and staurolite schist; COPPER CLIFF FORMATION: rhyolite
- 6 STOBIE GROUP and similar rocks: andesite, basalt, tuff, amphibolite, conglomerate, quartzite, greywacke, and argillite
- 5 Stratiform mixture of orthogneiss (6) and paragneiss (Huronian and older); Sa, metamorphosed quartzite and conglomerate and biotite garnet, and hornblende paragneisses and schists (probably Huronian)
- 4 Granite, granite gneiss, granodiorite, syenite, and porphyry
- 3 Diorite, gabbro, norite, peridotite, pyroxenite, hornblende, and anorthosite
- ARCHAEOAN**
- TIMISKAMING (?)**
- 2 Conglomerate, arkose, greywacke, quartzite, and slate; 2a, RIDOUT GROUP: conglomerate, arkose, greywacke, quartzite, slate, rhyolite, trachyte, tuff, agglomerate, hornblende schist, chlorite schist, and iron-formation
- KEEWATIN (?)**
- 1 Undivided; 1a, andesite, basalt, greenstone, tuff, agglomerate, hornblende schist, chlorite schist, and iron-formation; 1b, rhyolite, trachyte, dacite, tuff, agglomerate, greywacke, slate, and iron-formation; 1c, BATCHAWANA GROUP: conglomerate, greywacke, arkose, quartzite, slate, basalt, andesite, rhyolite, trachyte, tuff, and iron-formation
- Heavily drift-covered area:
- Granite, granite-gneiss, and inclusions of sedimentary and volcanic rocks:
- Volcanic and sedimentary rocks cut by granite:
- Iron-formation:
- Fault (mainly inferred):
- Anticlinal axis (approximate):
- Synclinal axis (approximate):
- Glacial striae:

Geology compiled by J.E. Wright from published maps of the Geological Survey of Canada and the Ontario Department of Mines. Geological information to 1953

Cartography by the Geological Cartography Unit, 1958



51.7 Ontario, Sudbury
Ry. Geol. 8 miles to inch
Map 1063A C2 1958



MAP 1063A
SUDBURY
SUDBURY, ALGOMA, TIMISKAMING, NIPISSING,
MANITOULIN, AND PARRY SOUND DISTRICTS
ONTARIO

Scale: One Inch to Eight Miles = 1/508,580
Miles 0 8 16 24

NOT TO BE TAKEN FROM LIBRARY
NE PAS SORTIR DE LA BIBLIOTHÈQUE

- GEOLOGICAL SOURCE MAPS**
- NORTHWEST QUARTER 41 O**
- 1925, Mississagi Reserve and Goulais River Iron Ranges; Ont. Dept. Mines, Map 344
 - 1929, Ridout Sheet; Geol. Surv. Can., Map 230A (41 O/10)
 - 1929, Woman River Sheet; Geol. Surv. Can., Map 231A
 - 1932, Sweze Area; Ont. Dept. Mines, Map 41c
 - 1932, Three Duck Lakes Area; Ont. Dept. Mines, Map 41d
 - 1933, Rush Lake Area; Geol. Surv. Can., Map 290A (41 O/16)
 - 1934, Sweze Gold Area; Ont. Dept. Mines, Map 43b
 - 1935, Conspersy Lake Area; Ont. Dept. Mines, Map 44g
 - 1936, Cow River Area; Geol. Surv. Can., Map 366A
 - 1937, Horwood Lake Area; Ont. Dept. Mines, Map 45a
 - 1938, Kamiskotia-Ridout Area; Ont. Dept. Mines, Map 1933a
 - 1942, Cunningham-Garnet Area; Ont. Dept. Mines, Map 511
 - 1949, Township of Oway; Ont. Dept. Mines, Map 1949-2
 - 1950, Mississagi Road; Ont. Dept. Mines, Prelim. Rept. 1950-6
 - 1952, Lac Aux Sables-Shawwa Lake Area; Ont. Dept. Mines, Prelim. Rept. 1952-2
- NORTHEAST QUARTER 41 P**
- 1917, Onaping; Geol. Surv. Can., Map 179A
 - 1921, Part of the Gowganda Silver Area; Ont. Dept. Mines, Map 30b
 - 1926, Anima-Nipissing Lake Area; Ont. Dept. Mines, Map 35c
 - 1926, Part of the Gowganda Silver Area; Ont. Dept. Mines, Map 35d
 - 1926, Grassy River Area; Ont. Dept. Mines, Map 35j
 - 1927, Part of the Shingogama Silver Area; Ont. Dept. Mines, Map 43c
 - 1927, Township of Midlothian; Ont. Dept. Mines, Map 1947-4
 - 1927, Dehli Township and part of Shelburn Township; Ont. Dept. Mines, Prelim. Rept. 1927-1
 - 1929, Lac Aux Sables-Shawwa Lake Area; Ont. Dept. Mines, Prelim. Rept. 1929-2
 - 1953, Township of Soltman; Ont. Dept. Mines, Map 1953-3

- SOUTHWEST QUARTER 41 J**
- 1925, Bruce Mines; Geol. Surv. Can., Pub. 1929
 - 1925, Bruce Mines; Geol. Surv. Can., Pub. 1929
 - 1925, Whiskey Lake Area; Ont. Dept. Mines, Map 34c
 - 1927, Wakomata Lake Area; Geol. Surv. Can., Map 194A
 - 1937, Manitoulin Island; Geol. Surv. Can., Map 351A
 - 1939, Flack Lake Area; Ont. Dept. Mines, Map 48b
 - 1943, East Bull Lake Area; Ont. Dept. Mines, Map 52d
 - 1950, Mississagi Road; Ont. Dept. Mines, Prelim. Rept. 1950-6
 - 1952, Lac Aux Sables-Shawwa Lake Area; Ont. Dept. Mines, Prelim. Rept. 1952-2
 - 1953, Southern parts of Long and Sprague Townships; Ont. Dept. Mines, Prelim. Rept. 1953-2
- SOUTHEAST QUARTER 41 I**
- 1917, Onaping; Geol. Surv. Can., Map 179A
 - 1921, Espanola Area; Geol. Surv. Can., Map 180A
 - 1921, Montclair and Hess Townships; Geol. Surv. Can., Pub. 1925
 - 1922, Wanapitei Lake Area; Geol. Surv. Can., Pub. 1948
 - 1925, Lake Panache; Geol. Surv. Can., Pub. 1971
 - 1929, Panache Sheet; Geol. Surv. Can., Map 220A (41 I/3)
 - 1929, Sudbury Basin Area; Ont. Dept. Mines, Map 38g
 - 1929, Cartier-Strask Area; Ont. Dept. Mines, Map 38h
 - 1930, Delamere Sheet; Geol. Surv. Can., Map 238A (41 I/2)
 - 1932, Moose Mountain-Wanapitei Area; Ont. Dept. Mines, Map 41e
 - 1932, Township of Jones, McNeil, Parke and Duns; Ont. Dept. Mines, Map 41f
 - 1934, Part of the Sudbury Nickel Area; Ont. Dept. Mines, Map 43d
 - 1936, Sudbury Series Southwest of Sudbury; Geol. Soc. Amer. Bull. Vol. 47 No. 11, p. 1680
 - 1937, Manitoulin Island; Geol. Surv. Can., Map 351A
 - 1938, Espanola Sheet; Geol. Surv. Can., Map 291A (41 I/5)
 - 1938, Copper Cliff Sheet; Geol. Surv. Can., Map 292A (41 I/6)
 - 1939, Ashgami Lake Area; Ont. Dept. Mines, Map 48a
 - 1941, Dryden-Falconbridge Area; Ont. Dept. Mines, Map 50g
 - 1942, Northeastern portion Timagami Lake Area; Ont. Dept. Mines, Map 51a
 - 1946, Chelmsford; Geol. Surv. Can., Map 871A (41 I/11)
 - 1946, Falconbridge; Geol. Surv. Can., Map 872A (41 I/10)
 - 1946, Rock Formations South and Southwest of Coistog; Geol. Surv. Can., Bull. 2, Fig. 2
 - 1952, Lac Aux Sables-Shawwa Lake Area; Ont. Dept. Mines, Prelim. Rept. 1952-2
 - 1953, Township of Baldwin; Ont. Dept. Mines, Map 1952-1

- REFERENCE**
- International boundary: - - - - -
 - District boundary: - - - - -
 - Township boundary: - - - - -
 - Indian Reserve boundary: - - - - -
 - Railway (large track, multiple track): - - - - -
 - Main highway: - - - - -
 - Other roads: - - - - -
 - Bush road or trail: - - - - -
 - City or large town: [Symbol]
 - Town or village: [Symbol]
 - Marsh or swamp: [Symbol]
 - Falls and rapids: [Symbol]
 - Power transmission line: - - - - -
 - Lookout tower: [Symbol]
 - Lighthouse: [Symbol]
 - Height in feet above mean sea-level: [Symbol]

Base-map compiled by the Surveys and Mapping Branch
Approximate magnetic declination, 73° West

1063A