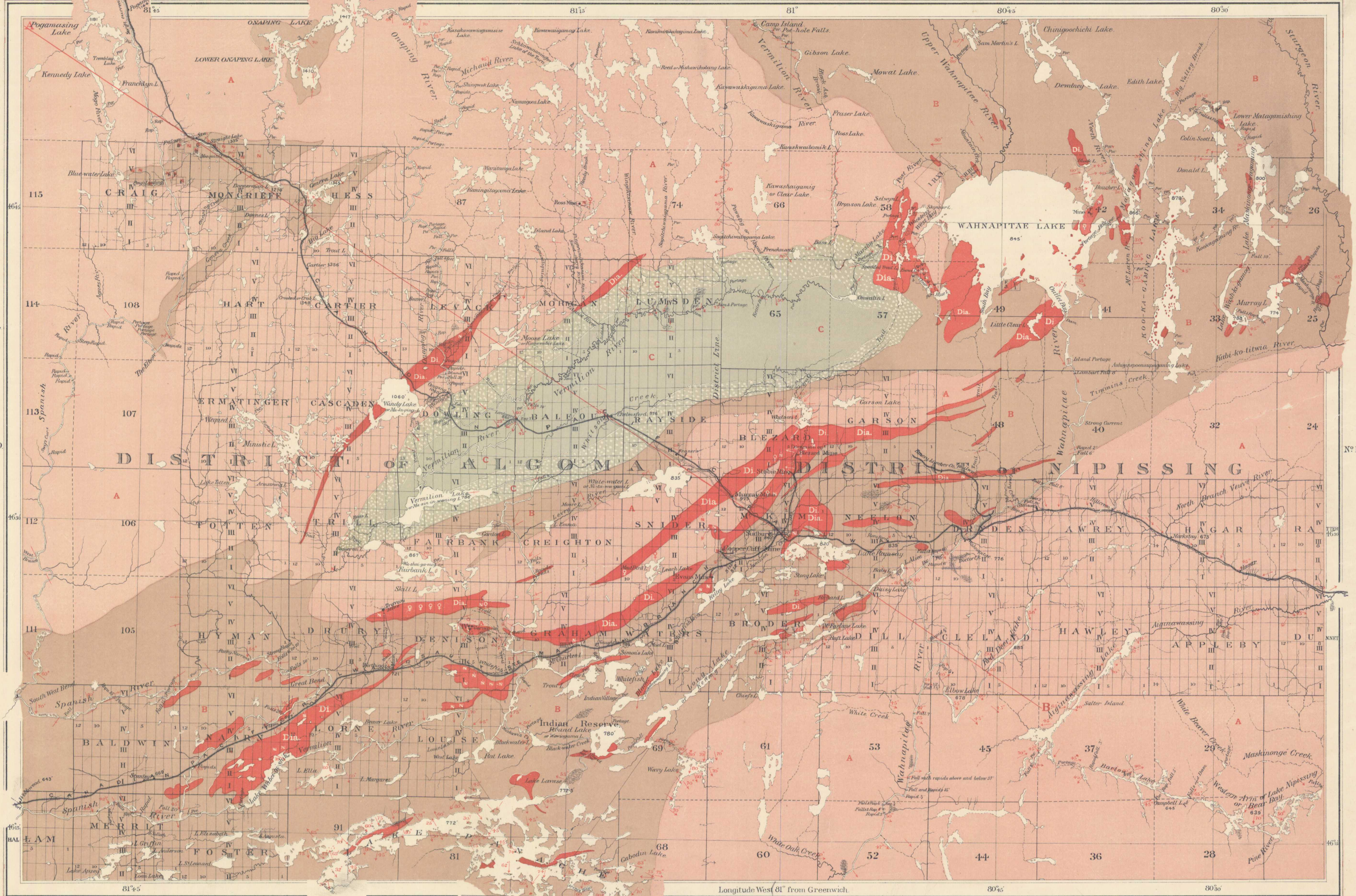


- Explanation of Colours.
- Cambrian ?
 - C** Dark argillaceous and gritty sandstones with shaly bands possibly Lower Cambrian.
 - C** Blackish siliceous volcanic breccia with black slate in some parts.
 - Huronian
 - B** Quartzites, conglomerates, greywackes, felstones, stratified quartz-diorites, clay slates, various kinds of fossiliferous shales, and rarely basaltic tuffs.
 - Di** Greenstones.
 - Laurentian
 - A** On the North-west side of the Huronian belt these rocks consist of red and grey horizontal granite and gneiss, merging into each other, on the S.W. side are gneisses only.
 - Greenstone dykes.
 - Dip.
 - Vertical strata.
 - Glacial striae.
 - Gold.
 - Copper.
 - Nickel.

Heights in feet above sea level are marked thus 300'. Those of the lakes are partly from barometric readings, while those along the lines of railway are from C.P. Railway profiles.

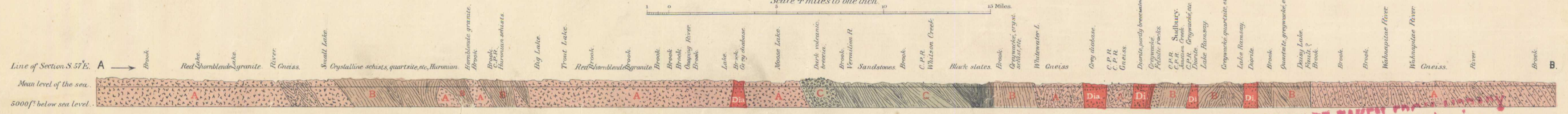


Compiled and Drawn by S. Barlow, Chief Draughtsman, assisted by A.E. Barlow, M.A. and L.N. Richard, B. App. Sc. from Surveys made by A. Murray, Esq. Ass't Provincial Geologist, 1856. R. Bell, M.D., LL.D. Ass't. Director, and A.E. Barlow, M.A. 1889-90 Crown Lands Department and Canadian Pacific Railway.

Mortimer & Co. Lith. Ottawa, Ont. No 125.

Geologically Surveyed by R. Bell, M.D., LL.D. &c. and A.E. Barlow, M.A. To accompany Part F. Annual Report, Vol. V. 1890-91.

PROVINCE OF ONTARIO,
DISTRICTS OF ALGOMA AND NIPISSING.
(Sudbury Sheet)
Nat. Scale, 253,440.
Scale 4 miles to one inch.



Sudbury.
5.1.7
A. Geol.

Map No. 343
Map sheet 343

NOT TO BE TAKEN FROM THE LIBRARY
NE PAS EGARDER LA BIBLIOTHEQUE

343