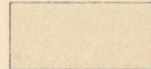
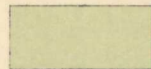
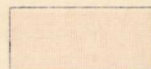
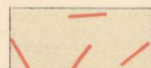




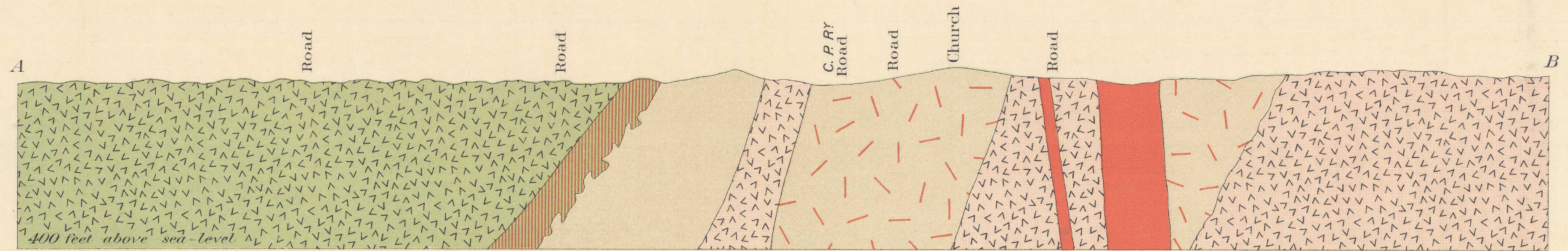
Explanation of Colours.

Eruptives

-  Hornblende schists, porphyrites, diorites, with occasional inclusions of greywacke (tuffs)
-  Quartz-hypersthene gabbro, (Norite) Nickel-bearing eruptive.
-  Biotite-granite, (Granite)
-  Breccia of hornblende-schists & penetrated by dykes of granite.
-  Band of norite impregnated with sulphides.
-  Olivine-diabase

Connects with North sheet Copper Cliff map.

To accompany Part II, Vol. XIV
 No. 864
 Price 10 cts.



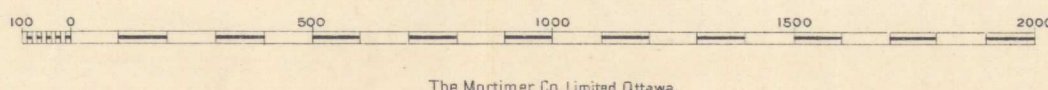
CROSS-SECTION ALONG LINE A-B

Horizontal and vertical Scale: 400 feet to 1 inch.

GEOLOGICAL MAP
 of the Vicinity of
ELSIE AND MURRAY MINES, SUDBURY MINING DISTRICT.
 ONTARIO.

by
 ALFRED E. BARLOW M. A., D. Sc.,
 Assisted by
 O. E. LEROY M. Sc.

Scale: 400 feet to 1 inch.



The Mortimer Co. Limited Ottawa.

Sudbury (Elsie & Murray Mines)

5-17
 A, Geol.

NOT TO BE TAKEN FROM LIBRARY
 NE PAS SORTIR DE LA BIBLIOTHEQUE

864

1904