

LEGEND

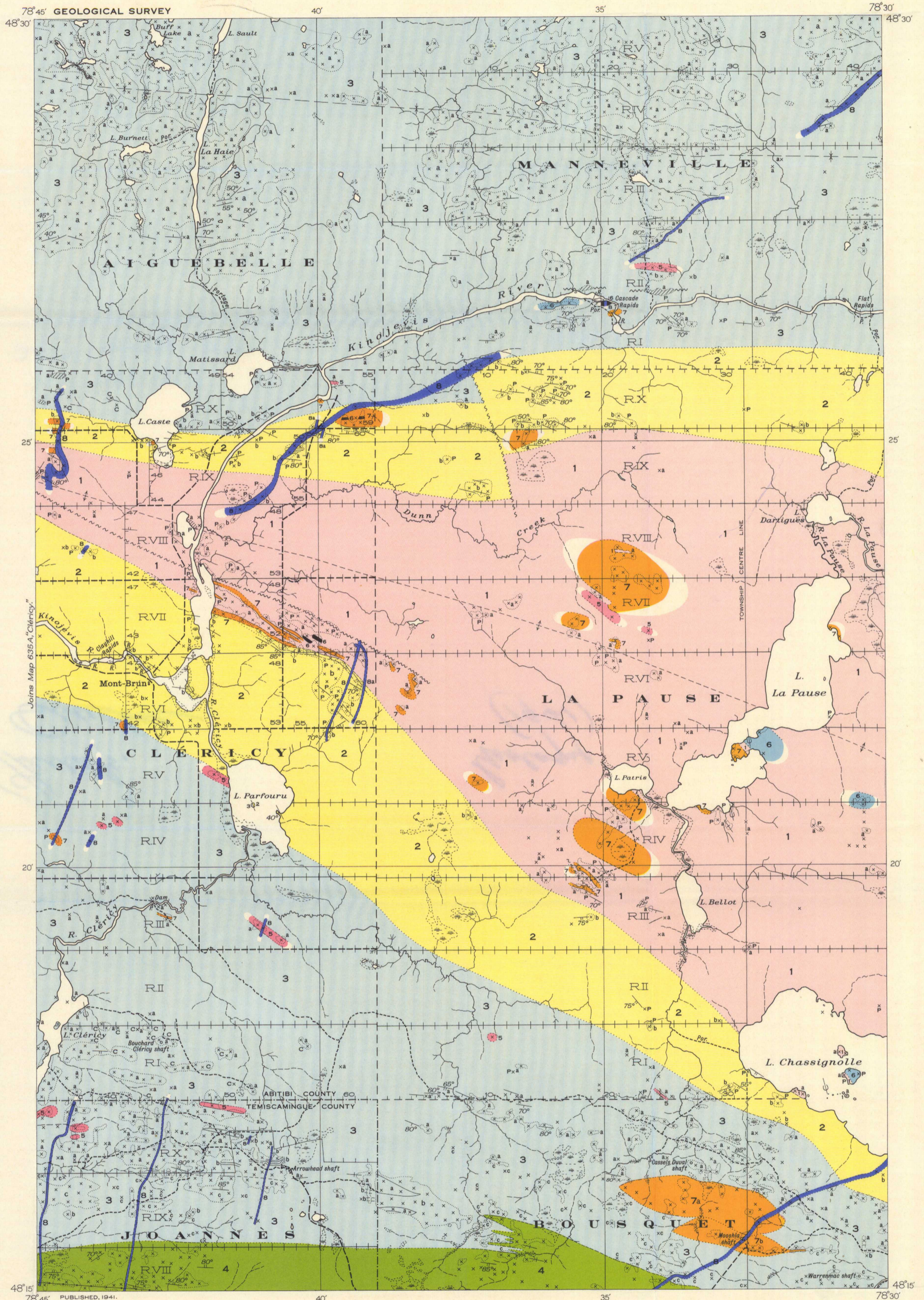
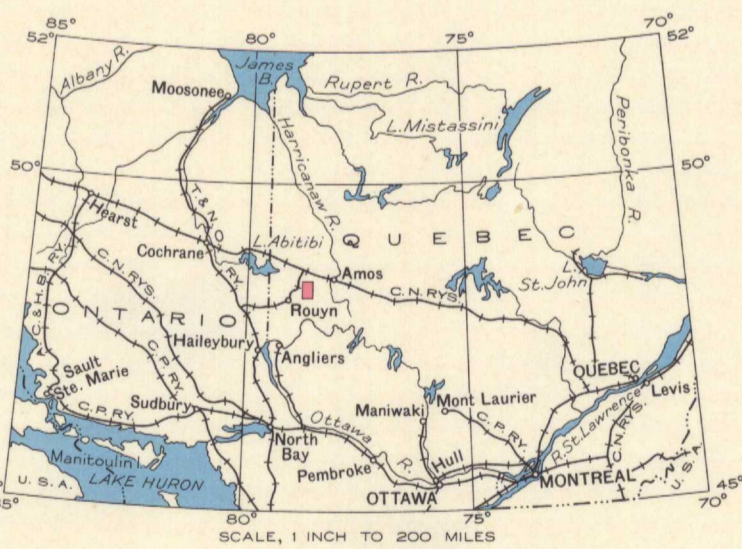
- PROTEROZOIC (LATE PRECAMBRIAN)**
- 8 Quartz diabase, olivine diabase; 8a, porphyritic quartz diabase
 - 7 Albite granite; feldspar and quartz-feldspar porphyry; 7a, granodiorite grading to quartz diorite and to albite granite; 7b, albite alaskite
 - 6/6 Serpentine
- ARCHEAN (EARLY PRECAMBRIAN)**
- 5 Diorite, quartz diorite, gabbro, quartz gabbro
 - 4 Greywacke; stratified tuff (chiefly near north contact); beds of magnetite and iron formation
 - 3 Andesite, dacite and minor rhyolite; related pyroclastic rocks; probably some intrusive diorite and diabase; a, mainly andesite and dacite; related pyroclastic rocks; b, mainly rhyolite; related pyroclastic rocks; c, mainly acidic pyroclastic rocks; greywacke altered to mica schist; massive acidic lava
 - 2 Mainly greywacke, conglomerate; a, conglomerate; b, greywacke, some tuff and agglomerate
 - 1 Mainly andesite and dacite; related pyroclastic rocks; a, andesite and dacite; related pyroclastic rocks; b, rhyolite tuffs and siliceous sediments

- Carbonatized rock (area of outcrop, small outcrop)..... c
- Outcrop containing small dykes of feldspar or quartz-feldspar porphyry..... P
- Area of rock outcrop, small rock outcrop..... x
- Bedding (inclined, vertical, overturned, dip unknown)..... /
- Bedding (direction of dip known, upper side of bed unknown)..... \
- Bedding (upper side of bed faces as indicated, direction of dip unknown)..... /
- Anticlinal axis (position assumed)..... - - - - -
- Synclinal axis (position approximate)..... - - - - -
- Fault, shear zone..... - - - - -
- Glacial striae..... - - - - -
- Shaft..... - - - - -

- Road not well travelled..... - - - - -
- Trail or portage..... - - - - -
- Power transmission line..... - - - - -
- Post Office..... - - - - -
- County boundary..... - - - - -
- Township boundary..... - - - - -
- Range and lot numbers..... VI, 20
- Stream (position approximate)..... - - - - -
- Rapid..... - - - - -
- Marsh..... - - - - -

Geology by J. W. Ambrose, 1937. (Geology in Joannès and Bousquet Townships adapted from work by H. C. Gunning, 1937, and 1938).

Base-map compiled by the Topographical Survey, 1937 from original surveys and information supplied by Federal Government Departments and the Quebec Department of Lands and Forests. Cartography by the Drafting and Reproducing Division, 1940.



MAP 634A

LA PAUSE

ABITIBI AND TÉMISCAMINGUE COUNTIES
QUEBEC

Scale, 63,360 or 1 Inch to 1 Mile
Miles

Approximate magnetic declination, 13°30' West.

NOT TO BE TAKEN FROM LIBRARY
NE PAS SORTIR DE LA BIBLIOTHÈQUE



634A