

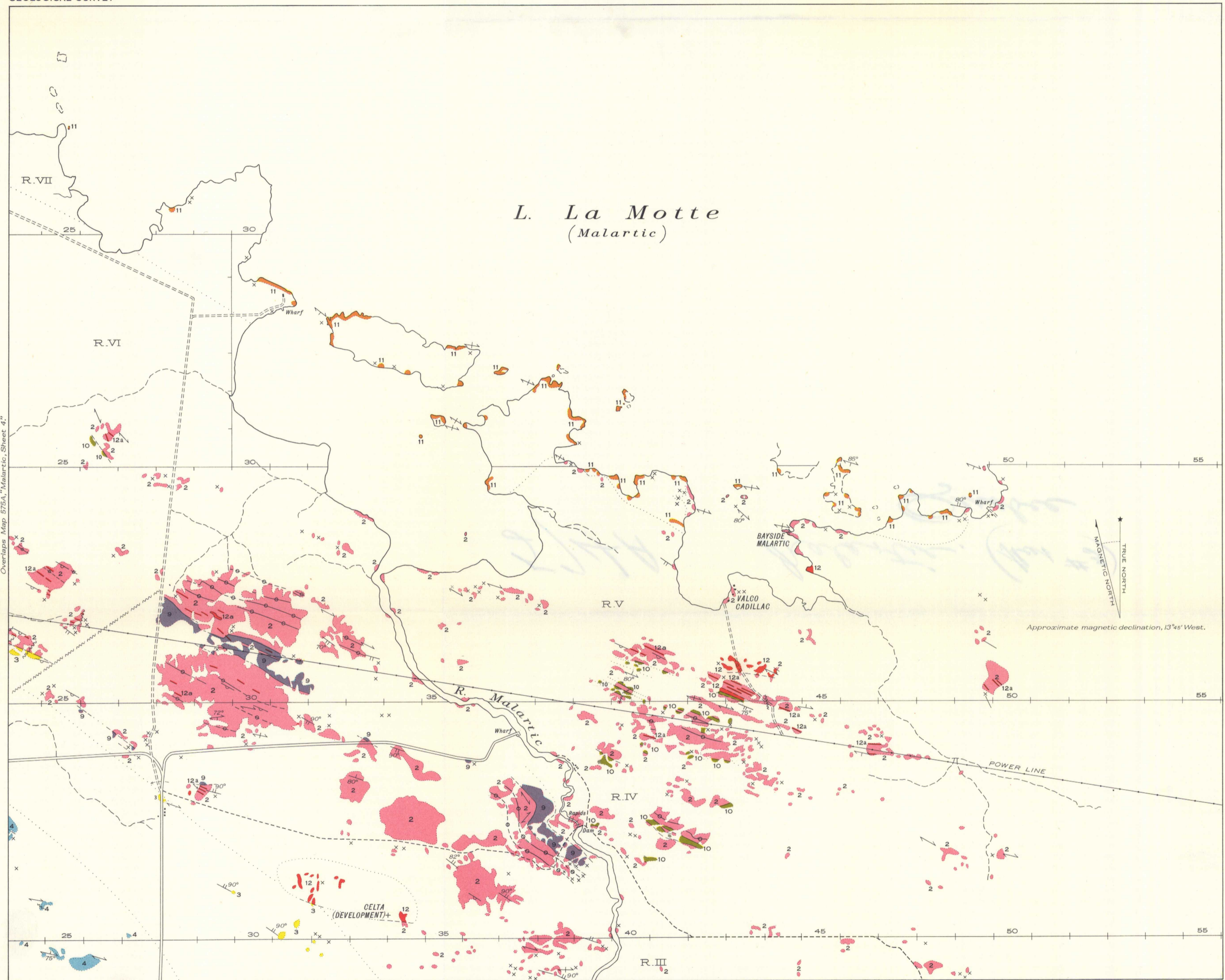
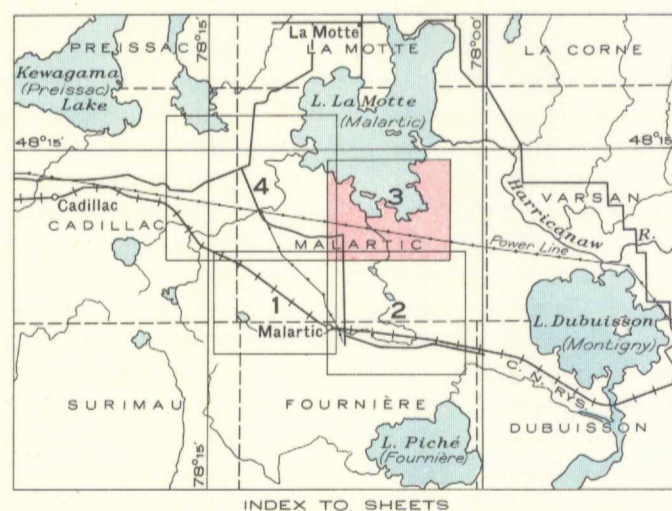
GEOLOGICAL SURVEY

LEGEND

- |                                |  |    |  |
|--------------------------------|--|----|--|
| ARCHEAN<br>(EARLY PRECAMBRIAN) |  | 12 | Albite granite and porphyritic albite granite;<br>12a, feldspar (albite) porphyry and quartz-<br>feldspar porphyry |
|                                |  | 11 | Granodiorite porphyry  |
|                                |  | 10 | Serpentine   |
|                                |  | 9  | Diorite, quartz diorite, gabbro  |
|                                |  | 4  | Mainly andesite and dacite   |
|                                |  | 3  | Greywacke, minor conglomerate  |
|                                |  | 2  | Mainly andesite and dacite; rhyolite, trachyte,<br>basalt, tuff, breccia   |

- Geological boundary.....
- Flow contact.....
- Fault, shear zone.....
- Bedding (inclined, dip unknown).....
- Bedding (upper side of bed faces as indicated, direction  
of dip unknown).....
- Bedding (direction of dip known, upper side of bed unknown).....
- Schistosity (inclined, vertical, direction of dip unknown).....
- Small rock outcrop.....
- Road and buildings.....
- Road not well travelled.....
- Trail.....
- Power line.....
- Range number..... R.IV
- Lot number..... 25
- Lake and stream (position approximate).....
- Names of mines and mining properties shown thus:..... VALCO CADILLAC

Geology by H. C. Gunning and J. W. Ambrose, 1935 and 1936.  
Base-map from surveys and topography by the Topographical  
Survey, 1935, and from information supplied by the Quebec  
Department of Lands and Forests. Cartography by the Drafting  
and Reproducing Division, 1939.



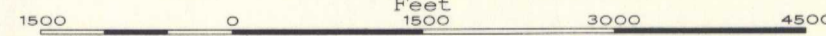
PUBLISHED, 1940.

Overlaps Map 573A, "Malartic, Sheet 2"

MAP 574A  
SHEET 3  
**MALARTIC**  
(IN FOUR SHEETS)  
MALARTIC TOWNSHIP  
ABITIBI COUNTY  
QUEBEC

NOT TO BE TAKEN FROM LIBRARY  
NE PAS SORTIR DE LA BIBLIOTHÈQUE

Scale, 1:5000 or 1 inch to 1500 Feet



574A