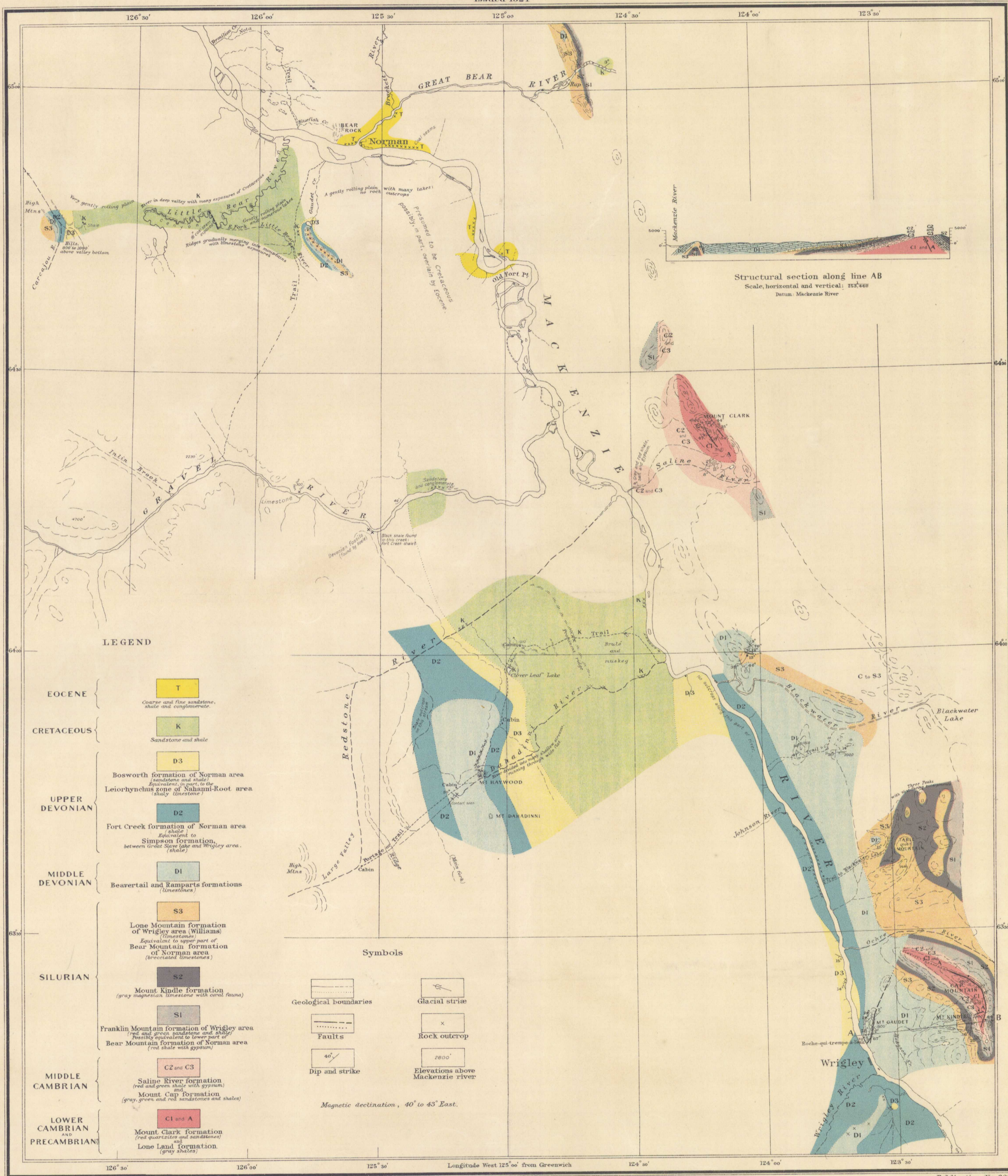


Canada
Department of Mines

HON. CHARLES STEWART, MINISTER, CHARLES CAMSELL, DEPUTY MINISTER.

GEOLOGICAL SURVEY
W. H. COLLINS, DIRECTOR.

Issued 1924



C. O. Senécal, Geographer and Chief Draughtsman.
J. O. Fortin, Draughtsman.

Publication No. 2022

MACKENZIE RIVER, BETWEEN WRIGLEY AND NORMAN,
DISTRICT OF MACKENZIE.

Scale of Miles

SOURCES OF INFORMATION
Geology by M.Y. Williams, 1922, and G.S. Hume, 1923.
Base-map from surveys by M.Y. Williams, 1922; G.S. Hume, 1923,
the Topographical Surveys Branch, Department of the
Interior, 1921, 1922, and the Imperial Oil Company, 1927.
Map compilation by J.O. Fortin.

To accompany report by G.S. Hume, in Summary Report, Part B, 1923.

Mackenzie R.
5.1.5
A, Geol.

NOT TO BE TAKEN FROM LIBRARY
NE PAS SORTIR DE LA BIBLIOTHÈQUE



2022