

Canada
Department of Mines

HON. ARTHUR MEIGHEN, MINISTER; R. G. McCONNELL, DEPUTY MINISTER.

GEOLOGICAL SURVEY
WILLIAM McINNES, DIRECTING GEOLOGIST.

ONTARIO, Sheet No. 139

LEGEND

PLEISTOCENE AND RECENT

Q (glacial till, sand and gravel)

KEWEENAWAN

3/ (olivine diabase)

HURONIAN

2/ (quartz diabase, quartz norite and intermediate varieties, and dark aplite derivatives)

A4 Lorrain quartzite, etc. (white quartzite and quartz conglomerates [Lorrain], overlain by banded cherty quartzite and white quartzite)

COBALT SERIES

A3 Gowganda formation (conglomerate, greywacke, laminated argillaceous impure quartzite and siliceous limestone)

1 Batholithic intrusives (granite, quartz porphyry, with related aplite and pegmatite)

Transition rocks (granite gneiss containing many specialized fragments from the pre-Huronian schist complex)

PRE-HURONIAN

A2 Iron formation (differentiated from the schist complex)

A1 Schist complex (mainly intrusive and intrusive rocks ranging from diorite to basalt, with minor amounts of preorogenic sediments from formation and normal sediments. These rocks have been considerably subsided and recrystallized)

Symbols

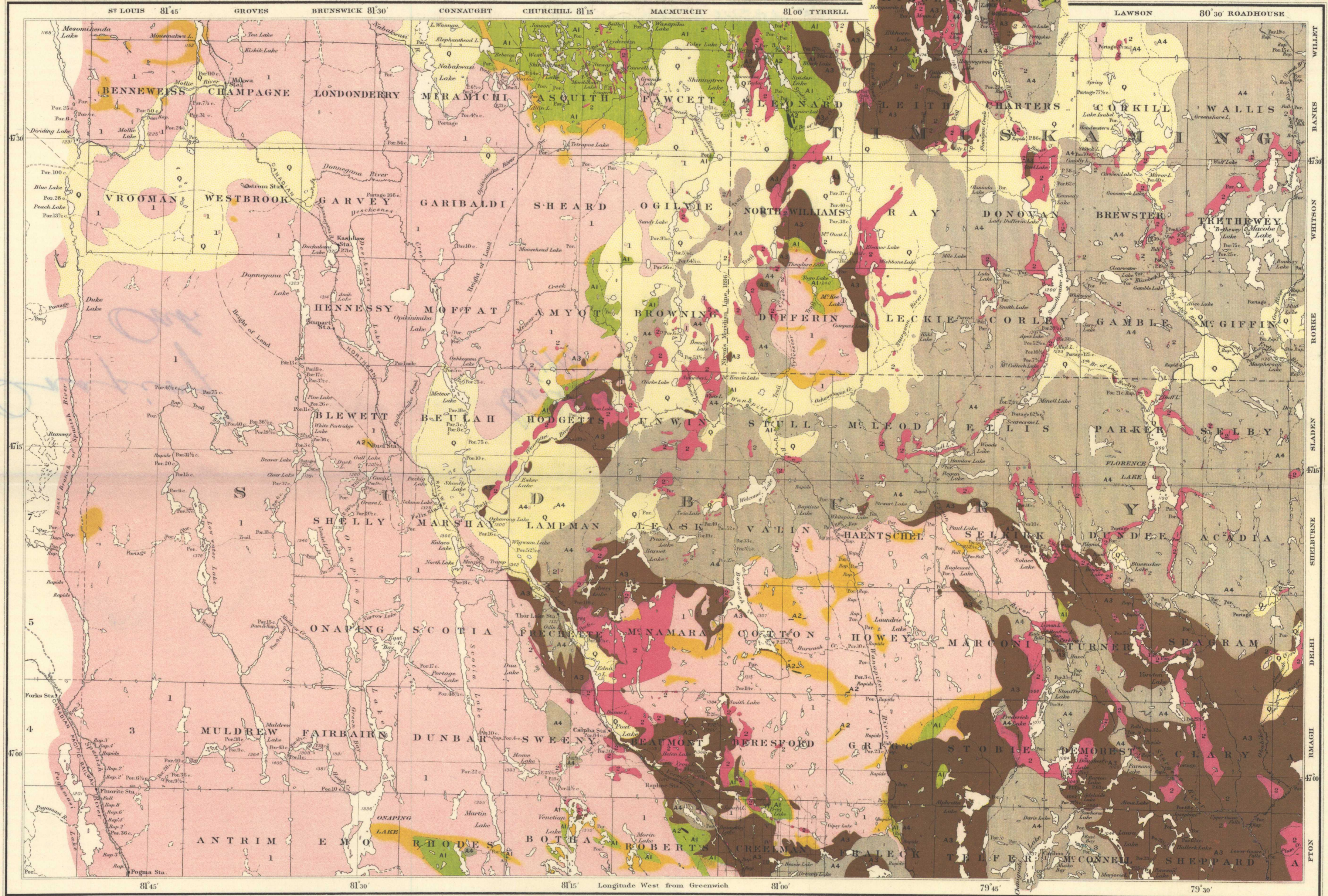
Geological boundary (defined)

Geological boundary (undefined)

Elevations (in feet above sea level)

Geographical position based on latitude and longitude of the astronomical stations established at Repulse, Lisford, Thompson and North Bay by the Department of the Interior.

Magnetic declination 5° to 7° West.



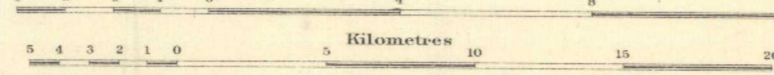
C. O. Senecal, Geographer and Chief Draughtsman.
R. B. Yarston, Draughtsman.

Publication No. 1621

MAP 179 A
(Issued 1917)

ONAPING
SUBDUARY AND TIMISKAMING DISTRICTS
ONTARIO

Scale, 253,440
Miles



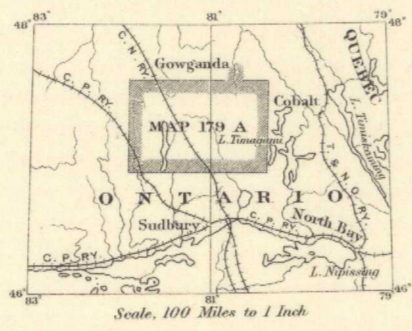
4 MILES TO 1 INCH

SOURCES OF INFORMATION

Geology and surveys by:
W. H. Collins, 1909-1913, and assistants H. C. Cochrane, 1909-1910, J. J. O'Neill, 1912, and J. R. Marshall, 1912-1913
W. J. Wilson, 1905.
Bureau of Mines, Ontario, 1909.

Surveys by:
Department of Lands, Forests and Mines, Ontario.
Canadian Northern and Canadian Pacific railways.

Map compilation by:
R. B. Yarston.



NOT TO BE TAKEN FROM LIBRARY
NE PAS SORTIR DE LA BIBLIOTHÈQUE

179A