

Canada
Department of Mines

HON. CHARLES STEWART, MINISTER; CHARLES CAMSELL, DEPUTY MINISTER.

GEOLOGICAL SURVEY

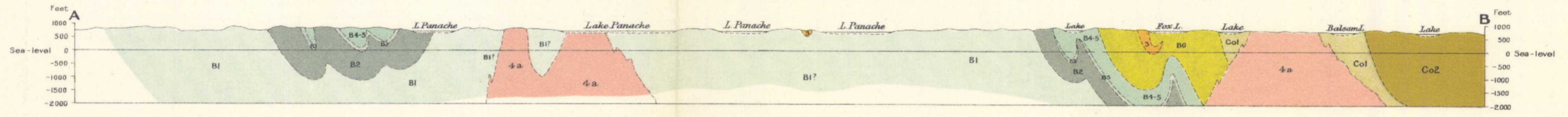
W. H. COLLINS, DIRECTOR.

Issued 1925

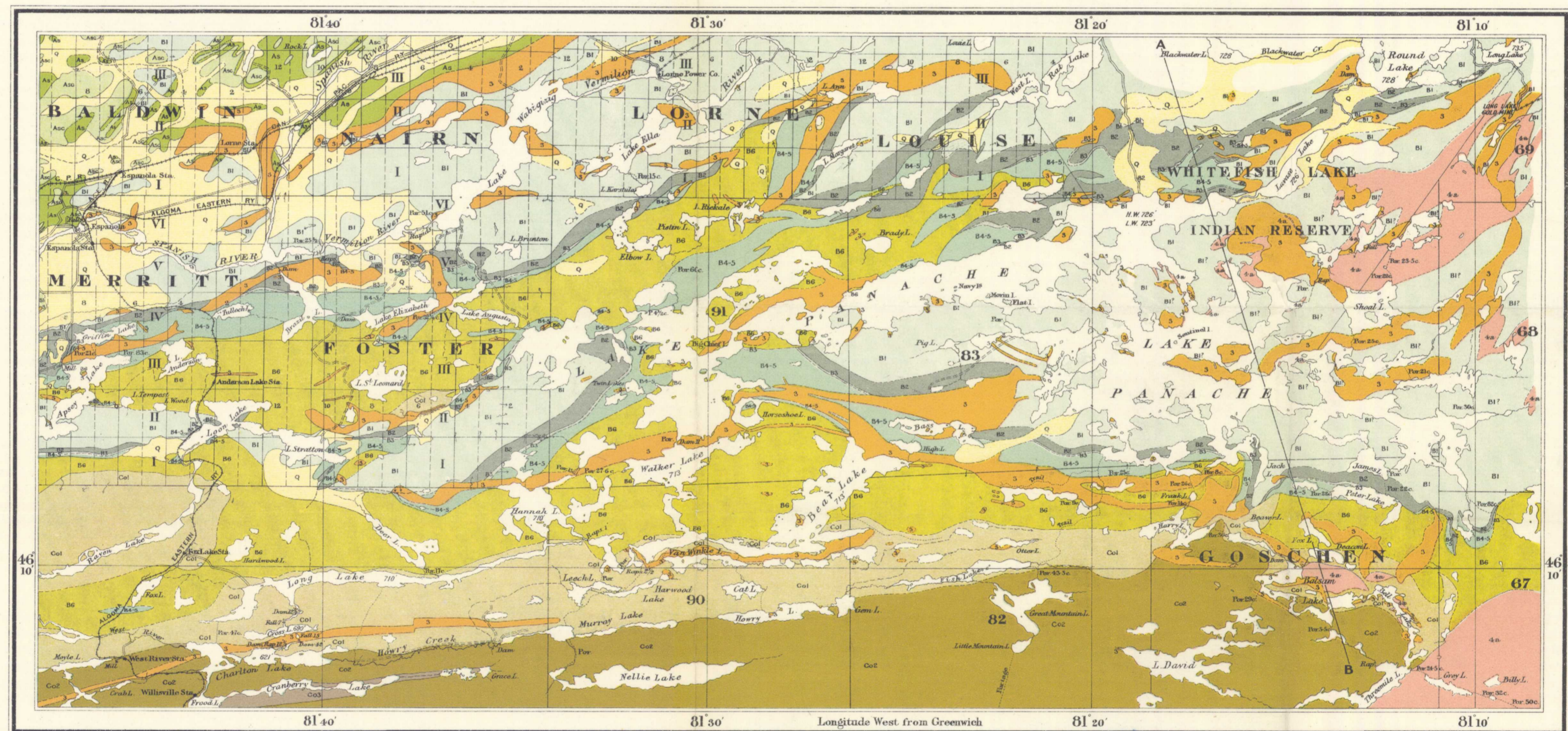
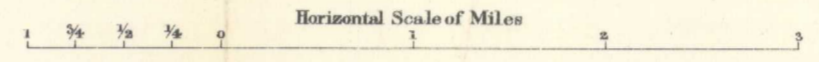


LEGEND

- QUATERNARY**
- PLEISTOCENE**
 - Q Superficial deposits (stratified lake clays, sand and gravel, and glacial drift)
- KEWEENAWAN**
 - 4a Batholithic intrusives (granite and syenite)
 - 3 Basic intrusives (sills and dykes of quartz-diorite and related diabasic rocks, including a few dykes of much younger olivine diabase)
- COBALT SERIES**
 - Co3 Banded cherty quartzite (thin bedded cherty quartzite)
 - Co2 Lorrain quartzite (white quartzite and quartz-conglomerate)
 - Co1 Gowganda formation (boulder conglomerate, graywacke, banded graywacke, impure quartzite and siliceous limestone)
- HURONIAN**
- BRUCE SERIES**
 - B6 Serpent quartzite (white feldspathic quartzite)
 - B4-5 Espanola greywacke and Espanola limestone (calcareous thin bedded silt with interbedded dolomitic limestone)
 - B3 Bruce limestone (dolomitic limestone interbedded with silt)
 - B2 Bruce conglomerate (boulder conglomerate)
 - B1 Mississauga quartzite (feldspathic quartzite with some arkose, conglomerate and argillite)
- PRE-HURONIAN**
 - As Sediments (interbedded quartzite and graywacke more or less changed to mica-schists)
 - Asc Schist complex (schistose and/or pyritic and volcanic, and iron formations)
- Symbols**
 - Geological boundary (defined)
 - Geological boundary (undefined)
 - Roads
 - Elevations (in feet above sea-level)



Structural Section along line A-B



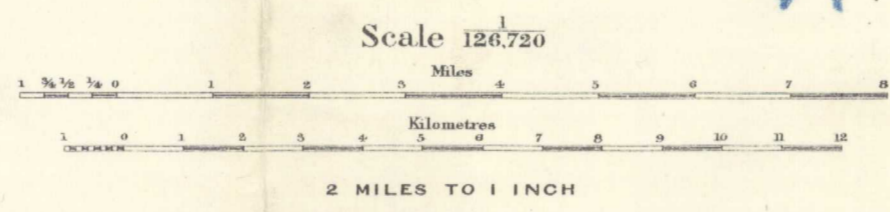
C.O. Senécal, Geographer and Chief Draughtsman
R.B. Yorston, Draughtsman

Publication No 1971

LAKE PANACHE
SUBURBY DISTRICT
ONTARIO

Geographical position based on astronomical station established by the Department of the Interior at Repulse, also based on Chart No 96, Department of Naval Service

Magnetic declination, 5' to 7' West



SOURCES OF INFORMATION

- Geology and surveys by:-
 - W.H. Collins, 1914-1916.
 - T.T. Quirk, 1915.
 - P. Eskola, 1922.
- Surveys by:-
 - Department of Lands, Forests and Mines, Ontario.
 - Department of Indian Affairs.
 - Geological Survey, Department of Mines
 - Canadian Pacific Railway
 - Algona Eastern Railway
- Map compilation by:-
 - R.B. Yorston

NOT TO BE TAKEN FROM LIBRARY
NE PAS SORTIR DE LA BIBLIOTHÈQUE

411
526
11 & 12
parts

411
5 & 6 parts
11 & 12

1971