

**LEGEND**

Undifferentiated, largely drift covered (principally underlain by Ordovician and Cambrian sediments)

Granite and aplite

Diabase breccia, pyroxenite etc.

Serpentine and peridotite

Serpentine and peridotite? (areas entirely drift covered but probably underlain by serpentine)

**Symbols**

Asbestos

Chromite

Talc

Antimony

Copper

Dip and strike

Vertical strata

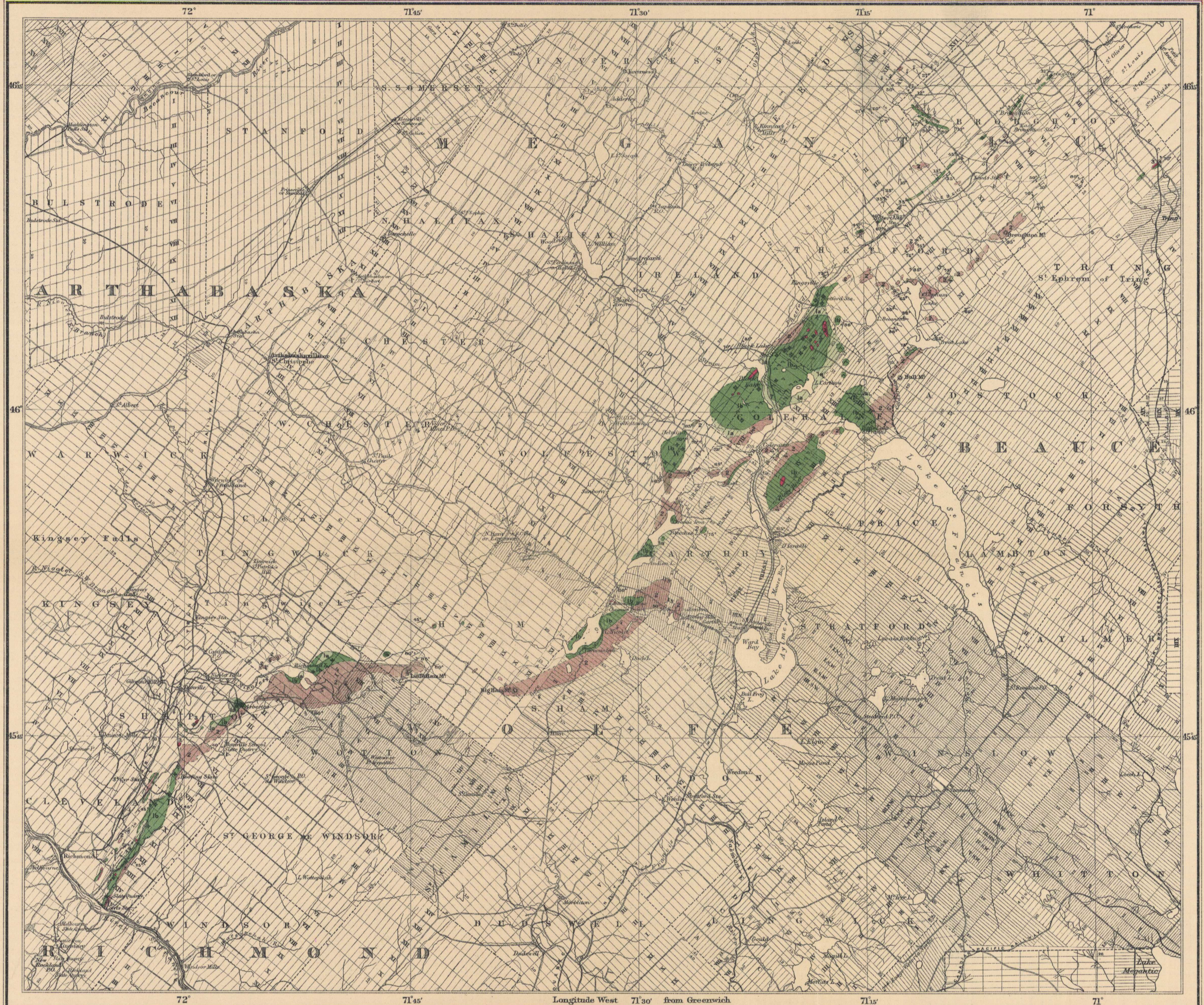
Glacial striae

Geological boundary (defined)

Geological boundary (approximate)

Geological boundary (assumed)

POST-ORDOVICIAN  
IN PART PROBABLY EARLIER



C. S. Seward, Geographer and Chief Draughtsman.  
A. M. Galloway, Draughtsman.

1202

MAP 52 A  
Northeast Part  
of the  
**SERPENTINE BELT**  
EASTERN TOWNSHIPS  
QUEBEC

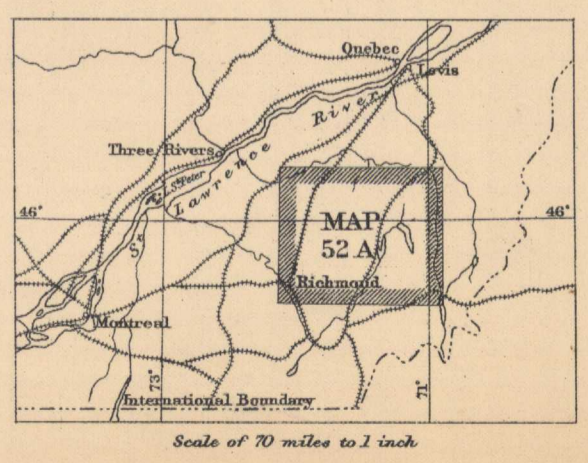
Scale, 1:250,000  
Miles  
Kilometres  
4 MILES TO 1 INCH

**GEOLOGY**  
JOHN A. DRESSER (IN CHARGE) 1907-1909  
A. M'LEAN 1907-1909  
R. R. ROSE 1907

MAP LIBRARY / CARTOTHEQUE

NOT TO BE TAKEN FROM LIBRARY  
NE PAS SORTIR DE LA BIBLIOTHEQUE

To accompany Memoir No. 22



LIBRARY / BIBLIOTHEQUE  
AUG 12 1909  
GEOLOGICAL SURVEY  
COMMISSION GEOLOGIQUE

52A ★