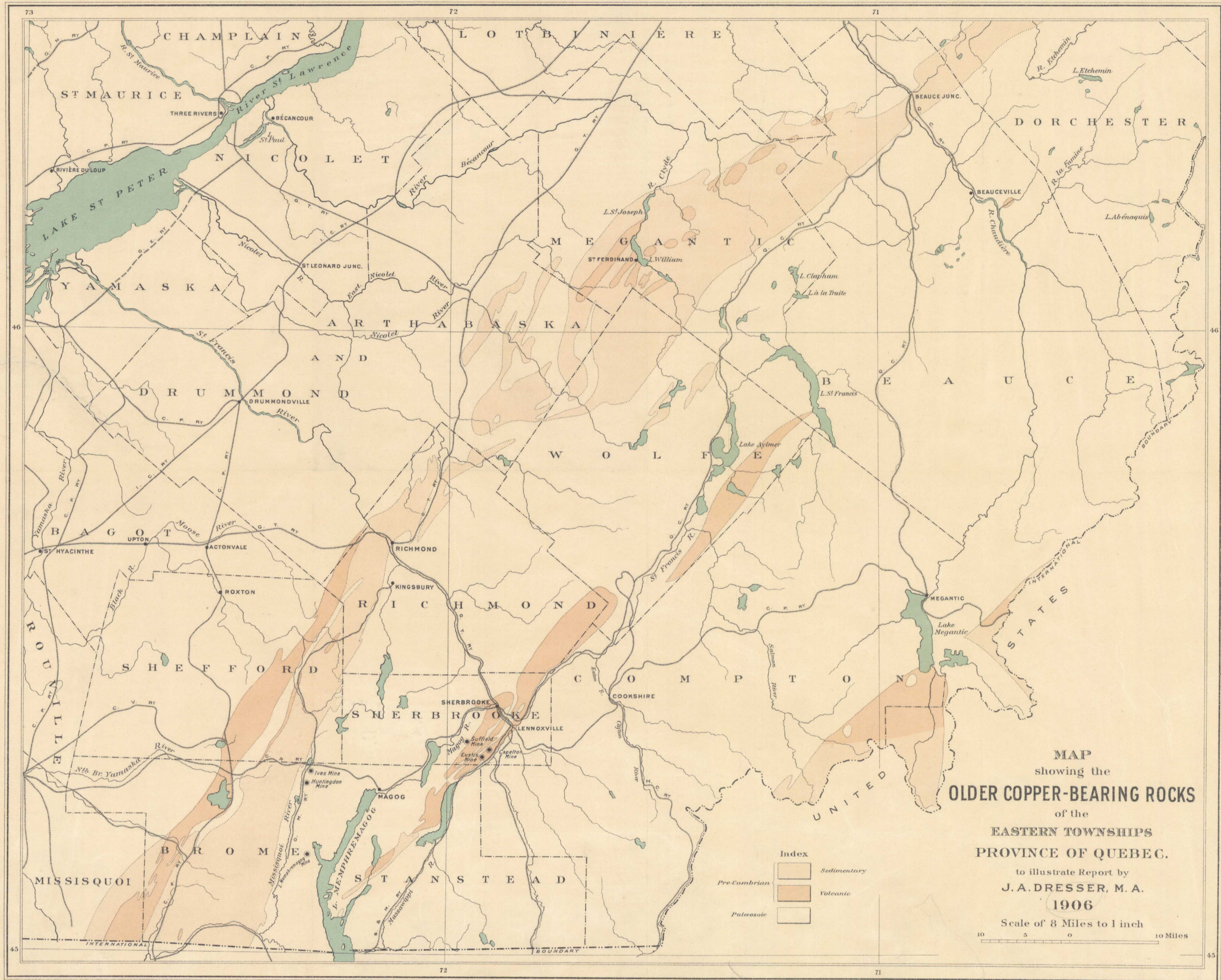


Canada
Department of Mines

HON. W. TEMPLEMAN, MINISTER.
A. P. LOW, DEPUTY MINISTER.
1907

GEOLOGICAL SURVEY



MAP showing the
OLDER COPPER-BEARING ROCKS
of the
EASTERN TOWNSHIPS
PROVINCE OF QUEBEC.

to illustrate Report by
J. A. DRESSER, M. A.
1906

Scale of 8 Miles to 1 inch
10 5 0 10 Miles

C. O. Senécal, Geographer & Chief Draughtsman.

No. 976

Price 10¢

NOT TO BE TAKEN FROM LIBRARY
NE PAS SORTIR DE LA BI'LIOTHÈQUE



Eastern tps copper-bearing rocks.

5.1.9
A. Geol. 1906

976/107