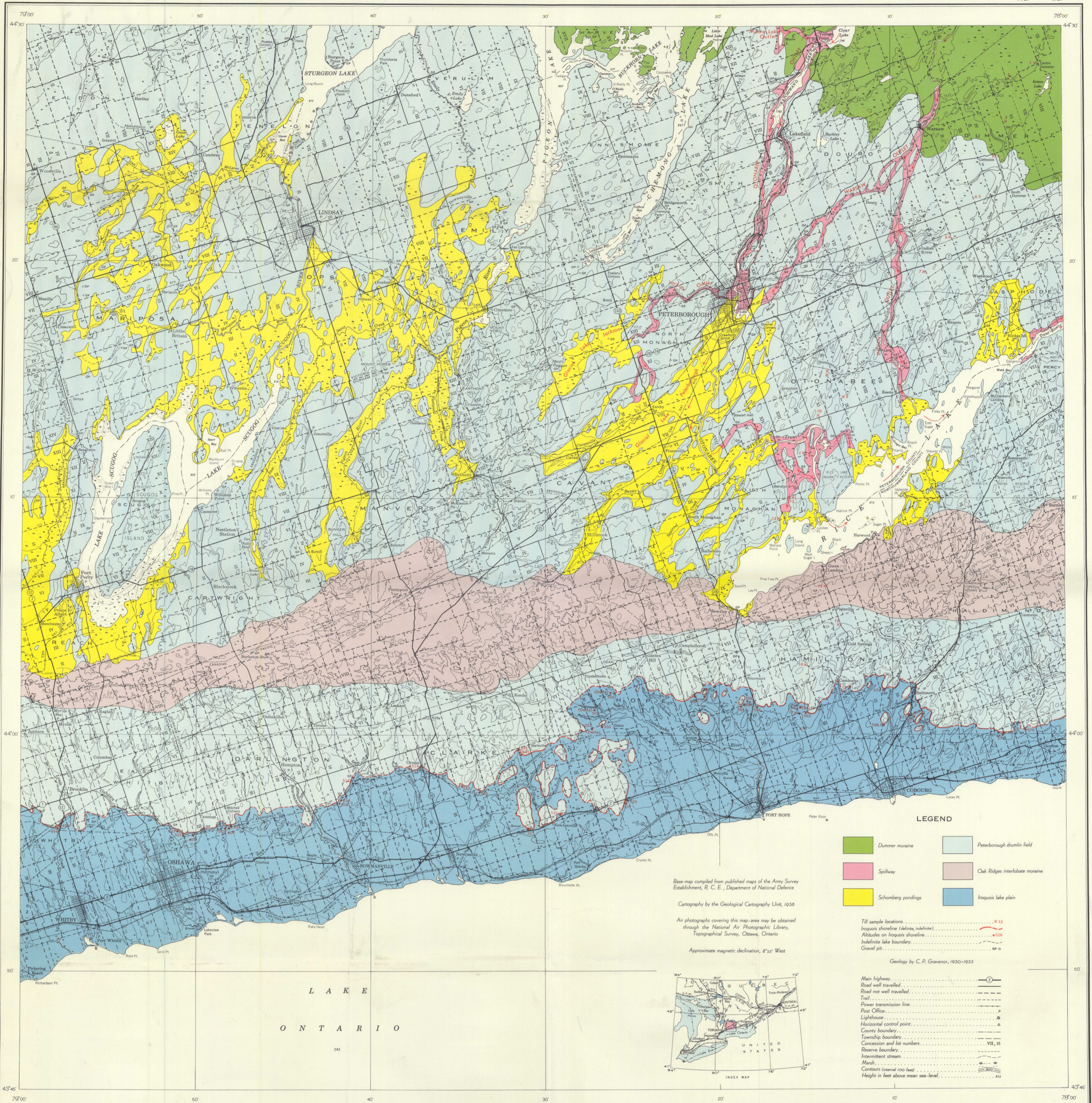




1051A



LEGEND

- Dummer moraine
- Spillway
- Schomberg pondings
- Peterborough drumlin field
- Oak Ridges interlobate moraine
- Iroquois lake plain

Base-map compiled from published maps of the Army Survey Establishment, R. C. E., Department of National Defence

Cartography by the Geological Cartography Unit, 1958

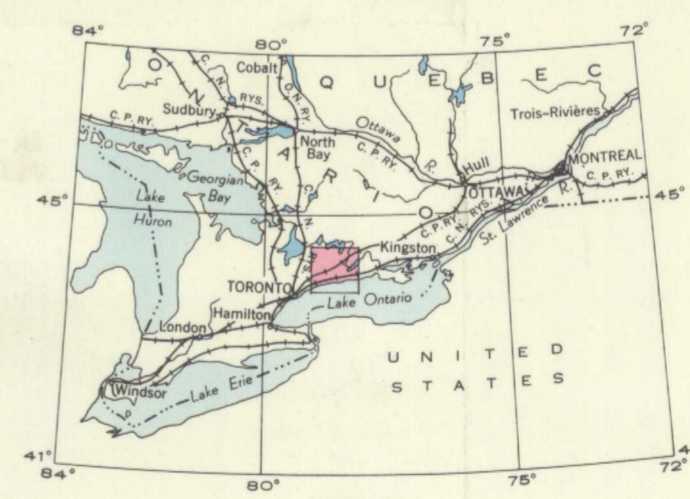
Air photographs covering this map-area may be obtained through the National Air Photographic Library, Topographic Survey, Ottawa, Ontario

Approximate magnetic declination, 8°35' West

- Till sample locations: x 15
- Iroquois shoreline (definite, indefinite): - - - - -
- Altitudes on Iroquois shoreline: • 526
- Indefinite lake boundary: - - - - -
- Gravel pit: ⊙

Geology by C. P. Gravenor, 1950-1953

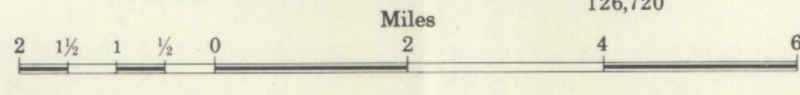
- Main highway: —○—
- Road well travelled: —
- Road not well travelled: - - -
- Trail: ⋯
- Power transmission line: —●—
- Post Office: P
- Lighthouse: ⊙
- Horizontal control point: △
- County boundary: - - - - -
- Township boundary: - - - - -
- Concession and lot numbers: VII, 15
- Reserve boundary: - - - - -
- Intermittent stream: - - - - -
- Marsh: - - - - -
- Contours (interval 100 feet): - - - - -
- Height in feet above mean sea-level: 112



L A K E
O N T A R I O

MAP 1051A
PHYSIOGRAPHIC DIVISIONS
LINDSAY-PETERBOROUGH AREA
DURHAM, PETERBOROUGH, VICTORIA, NORTHUMBERLAND, AND ONTARIO COUNTIES

ONTARIO
Scale: One Inch to Two Miles = $\frac{1}{126,720}$



NOT TO BE TAKEN FROM LIBRARY
NE PAS SORTIR DE LA BIBLIOTHÈQUE

1051A