

- LEGEND**
- PLEISTOCENE AND RECENT POND AND ORGANIC DEPOSITS**
- 13 Swamp, muck
- ÆOLIAN DEPOSITS**
- 12 Dune sand
- GLACIO-LACUSTRINE DEPOSITS**
- 11 Lake plain: 11a, sand; 11b, silt and clay
- GLACIO-FLUVIAL DEPOSITS**
- 10 Beach, bar, and similar features: sand, gravel
 - 9 Spillway: sand, gravel
 - 8 Outwash plain: sand, minor gravel
 - 7 Esker: 7a, gravel, sand, silt; 7b, sand washed from esker
 - 6 Ice-block ridge area: sand, gravel, till
 - 5 Kame: sand, gravel; minor till
 - 4 Interlobate Kame moraine: sand, gravel; minor till
- GLACIAL DEPOSITS**
- 3 Recessional moraine: stony, sandy till
 - 2 Drumlin: till, till and stratified drift; 2a, rock core
 - 1 Ground moraine: mainly sandy till
- BEDROCK OUTCROPS**
- Paleozoic: mainly limestone
 - Precambrian: mainly granite

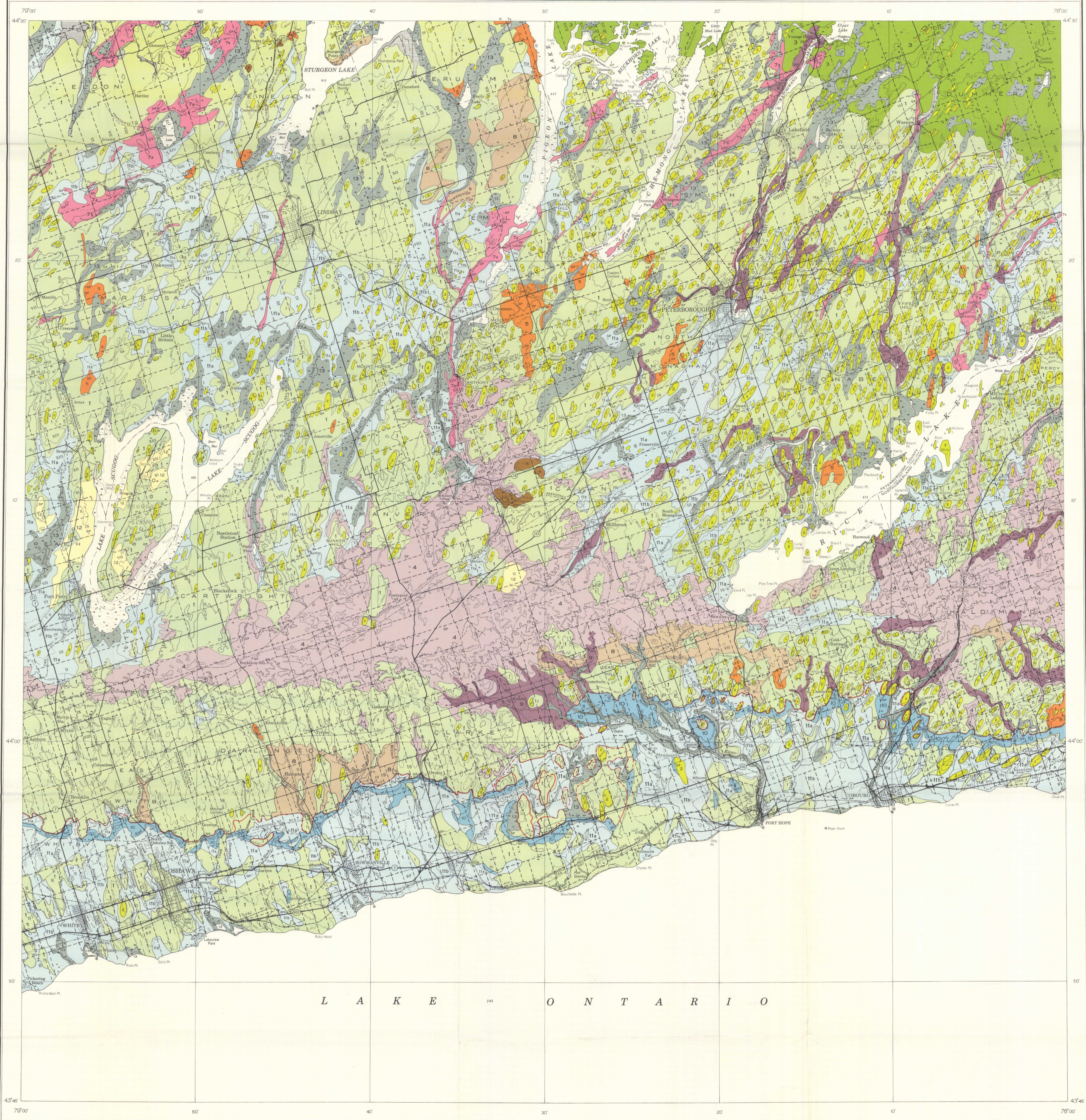
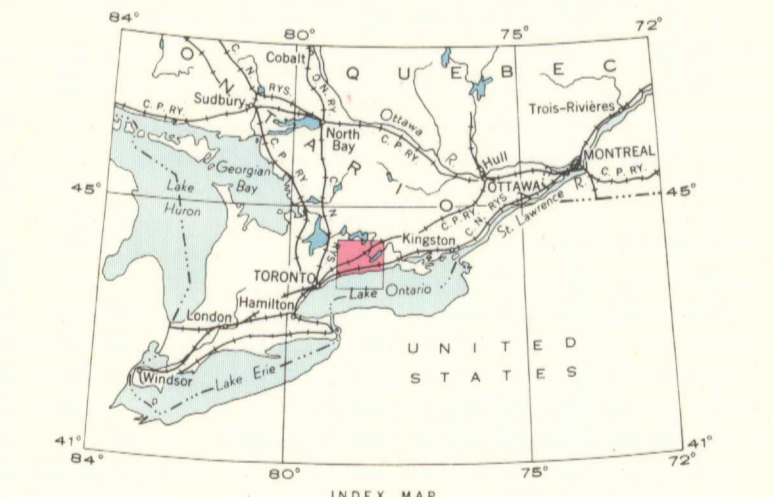
- Inorganic shoreline (definite, indefinite)
- Glacial striae
- Gravel pit
- Geology by C. P. Gravenor, 1950-1953
- Main highway
- Road well travelled
- Road not well travelled
- Trail
- Power transmission line
- Post Office
- Lighthouse
- Horizontal control point
- County boundary
- Township boundary
- Concession and lot numbers
- Reserve boundary
- Intermittent stream
- Marsh
- Contours: interval 100 feet
- Elevation
- Height in feet above mean sea-level

Base map compiled from published maps of the Army Survey Establishment, R. C. E., Department of National Defence

Cartography by the Geological Cartography Unit, 1958

Air photographs covering this map-area may be obtained through the National Air Photographic Library, Topographical Survey, Ottawa, Ontario

Approximate magnetic declination, 6° 55' West



L A K E O N T A R I O

PUBLISHED, 1958
COPIES OF THIS MAP MAY BE OBTAINED FROM THE DIRECTOR, GEOLOGICAL SURVEY OF CANADA, OTTAWA

MAP 1050A
SURFICIAL GEOLOGY
LINDSAY-PETERBOROUGH AREA
DURHAM, PETERBOROUGH, VICTORIA, NORTHUMBERLAND, AND ONTARIO COUNTIES
ONTARIO

Scale: One Inch to Two Miles = $\frac{1}{126,720}$
Miles

NOT TO BE TAKEN FROM LIBRARY
NE PAS SORTIR DE LA BIBLIOTHEQUE

1050A