

LEGEND

- PALAEZOIC**
- 10 LERAY AND LOWVILLE FORMATIONS: limestone
 - 9 PAMELIA FORMATION: limestone, dolomitic limestone, sandy limestone, shale
- POST-HASTINGS**
- 8 Granite-gneiss; 8a, Deloro granite and syenite
 - 7 Diorite, gabbro, basalt
- HASTINGS SERIES AND GRENVILLE SERIES**
- 6 Crystalline limestone, some dolomitic limestone
 - 5 Dolomite, some dolomitic limestone
 - 4 Conglomerate
 - 3 Argillite; mica schist, garnet schist, staurolite schist; 3a, mica schist and garnet schist interbedded with amphibole schist; 3b, mica schist and garnet schist injected and silicified by granite
 - 2 Rhyolite, porphyritic rhyolite, rhyolite flow breccia and agglomerate
 - 1 Andesite, amphibole schist, amphibolite
- PRECAMBRIAN**
- x x Areas of few or no rock outcrops; small rock outcrops shown thus x

NOTE: Areas believed to be underlain by Hastings Series strata are indicated by the symbol H; areas believed to be underlain by Grenville Series strata are indicated by the symbol G.

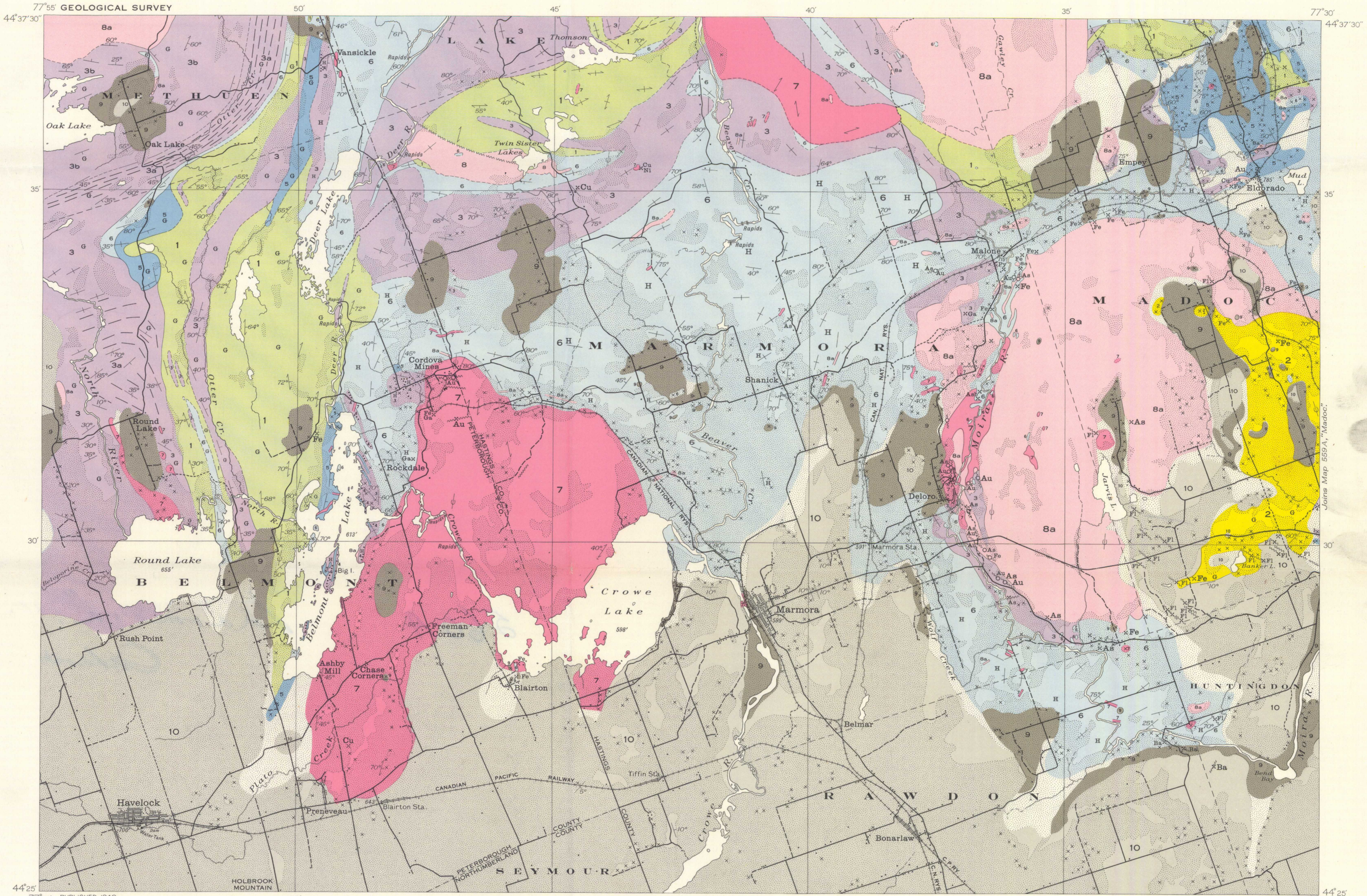
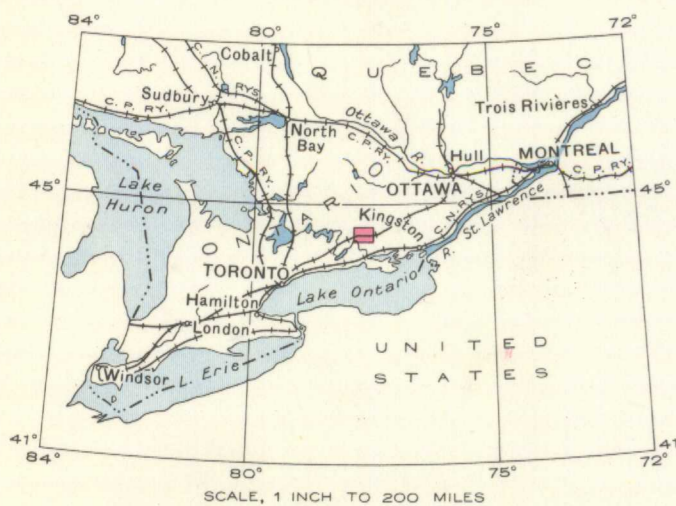
- Geological boundary (defined, approximate, assumed) ————
- Bedding (inclined, vertical, dip unknown) ————
- Schistosity (inclined, vertical, direction of dip unknown) ————
- Fault, shear zone, or vein ————
- Glacial striae ————
- Shaft ————
- Prospect ————
- Quarry ————
- Road and buildings ————
- Road not well travelled ————
- Trail ————
- County boundary ————
- Township boundary ————
- Intermittent stream ————
- Height in feet above Mean sea level ————

Geology by M.E. Wilson, 1920-1925.

Base-map prepared by the Topographical Survey, 1937, from information supplied by the Geographical Section, General Staff, Department of National Defence. Cartography by the Drafting and Reproducing Division, 1939.

MINERAL OCCURRENCES

- Au Gold
- As Arsenic (arsenopyrite)
- Asb Asbestos
- Ba Barite
- Cu Copper
- Fe Iron (chiefly magnetite)
- Fl Fluorite
- Ga Garnet
- Ni Nickel
- Py Pyrite
- T Talc



MAP 560A
MARMORA
HASTINGS, PETERBOROUGH, AND
NORTHUMBERLAND COUNTIES
ONTARIO
Scale, 63,366 or 1 Inch to 1 Mile
Approximate magnetic declination, 13°30' West.

NOT TO BE TAKEN FROM LIBRARY
NE PAS SORTIR DE LA BIBLIOTHÈQUE



560A