

LEGEND

- QUATERNARY**
- RECENT**
- Swamp (mainly muck)
- PLEISTOCENE**
- GLACIO-LACUSTRINE DEPOSITS**
- Sand
 - Clay
 - Beach sand and gravel
- GLACIO-FLUVIAL DEPOSITS**
- Sand and gravel (Kame, ice-contact)
 - Esker
 - Outwash
- GLACIAL DEPOSITS**
- Ground moraine
 - Terminal moraine
 - Drumlin
 - Ice-block ridges
- BEDROCK OUTCROPS**
- Paleozoic; mainly limestone
 - Precambrian; mainly granite and granite-gneiss
- Abandoned shoreline (main Algonquin beach)
- Glacial striæ
- Main highway (numbered) 12
- Railway
- Abandoned railway
- County boundary
- Township boundary
- Contours (interval 100 feet)
- Depression contour
- Height in feet above mean sea-level 718

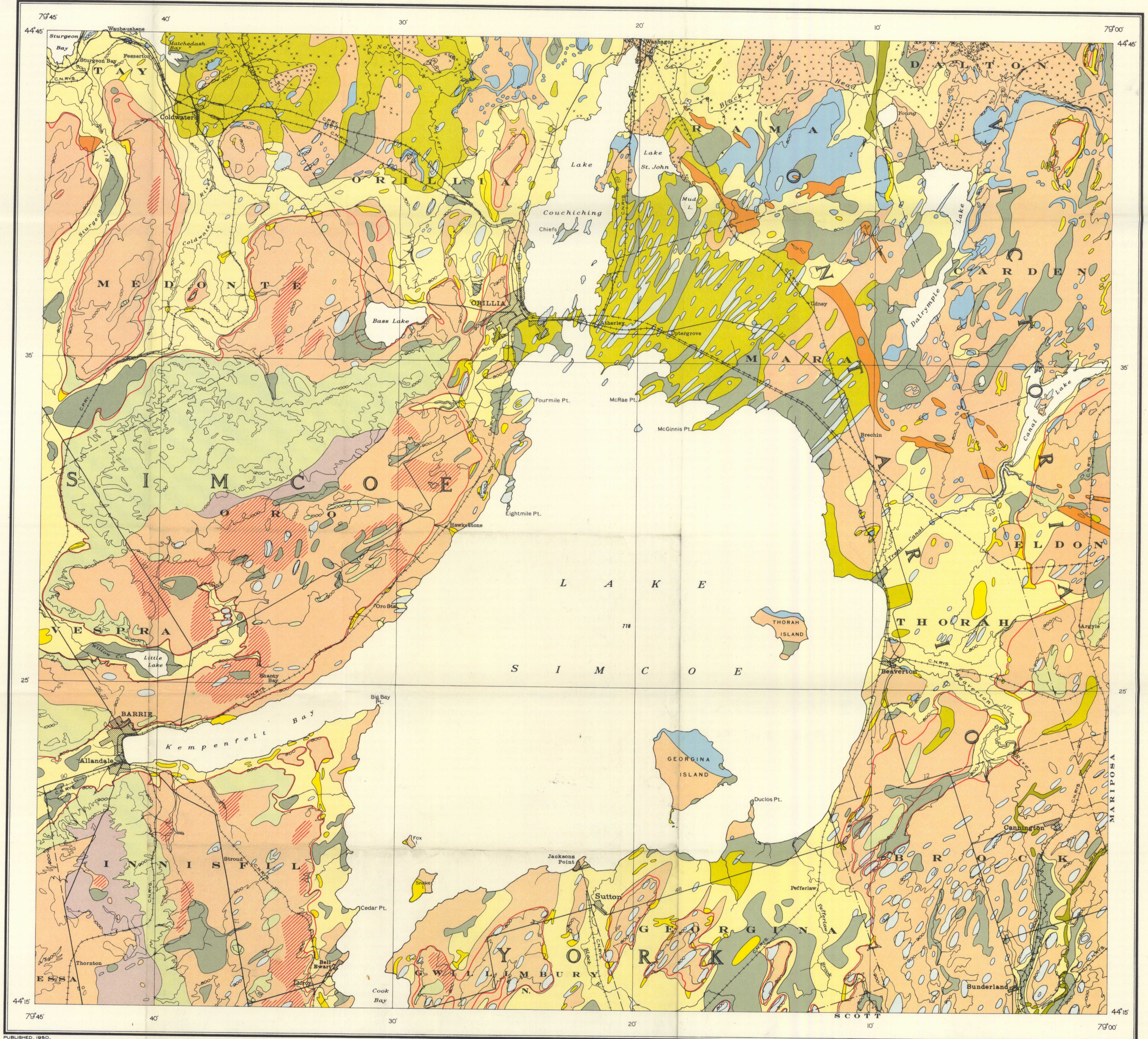
Geology by R.E. Deane, 1945-1948.

For physiographic divisions and locations of soil samples see Map 993A, "Lake Simcoe District."

Cartography by the Geological Mapping Division, 1949.

Approximate magnetic declination, 8° to 10° West.

SCALE, 1 INCH TO 200 MILES



MAP 992A
LAKE SIMCOE DISTRICT
 ONTARIO
 PLEISTOCENE AND RECENT DEPOSITS
 AND BEDROCK OUTCROPS
 Scale, 1 inch to 2 Miles = 1:126,720
 Miles

NOT TO BE TAKEN FROM LIBRARY
 NE PAS SORTIR DE LA BIBLIOTHÈQUE

992A

This map has been produced from a scanned version of the original map
 Reproduction par numérisation d'une carte sur papier