

HURONIAN QUATERNARY

PRE-HURONIAN

KEEWATIN

LEGEND

GLACIAL AND RECENT  
Principal areas of drift; underlying bedrock concealed and its nature inferred

Great Unconformity

COBALT SERIES  
Conglomerate, greywacke and slate

Great Unconformity

3  
Syonite

Carbonated rock or dolomite

2  
Syonite porphyry

1a  
Diorite porphyry (porphyry phase)

1b  
Diorite porphyry (diorite phase)

A7  
Tufaceous slate and greywacke

A6  
Basalt with interbedded tuffs

A5  
Soda trachyte

A4  
Greywacke with some quartzite and slate

A3  
Conglomerate with interbedded greywacke

Unconformity

A2  
Basalt tuff and iron formation

A1  
Basalt

Symbols

Geological boundary (definite)

Geological boundary (approximate)

Geological boundary (assumed)

Fault (definite)

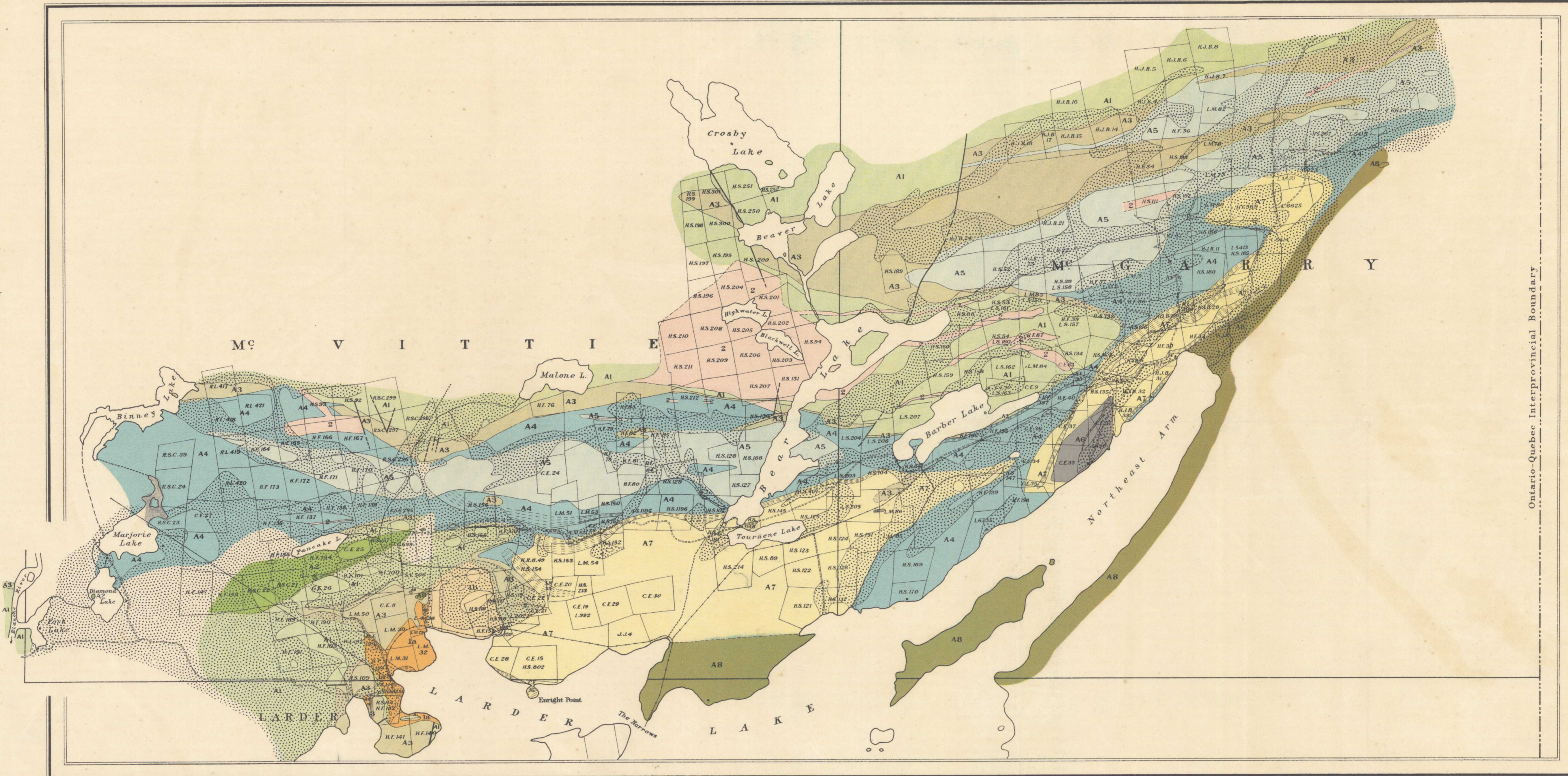
Fault (approximate)

Fault (assumed)

Road

Trail, portage

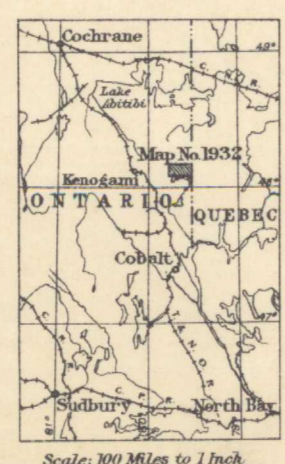
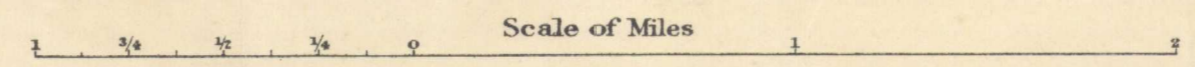
Power line



C.O. Sénécal, Geographer and Chief Draughtsman  
J.O. Forth, Draughtsman

Publication No. 1932

LARDER LAKE AREA, McVITTIE AND McGARRY TOWNSHIPS, TIMISKAMING DISTRICT, ONTARIO.



Sources of Information

Geology by H.C. Cooke, 1920.  
Base-map from surveys by M.E. Wilson, 1909, and H.C. Cooke, 1920;  
and from plans of surveys by the Department of Lands and Forests, Ontario.  
Map compilation by H.C. Cooke.

NOT TO BE TAKEN FROM LIBRARY  
NE PAS SORTIR DE LA BIBLIOTHÈQUE

131  
To accompany Memoir by H.C. Cooke

Larder Lake area  
5-1-7  
A, Geol.