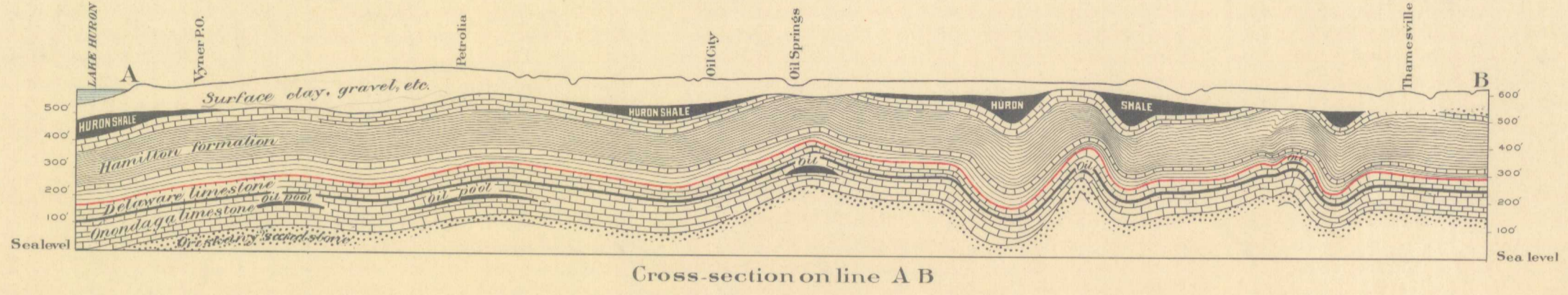


Canada  
Department of Mines

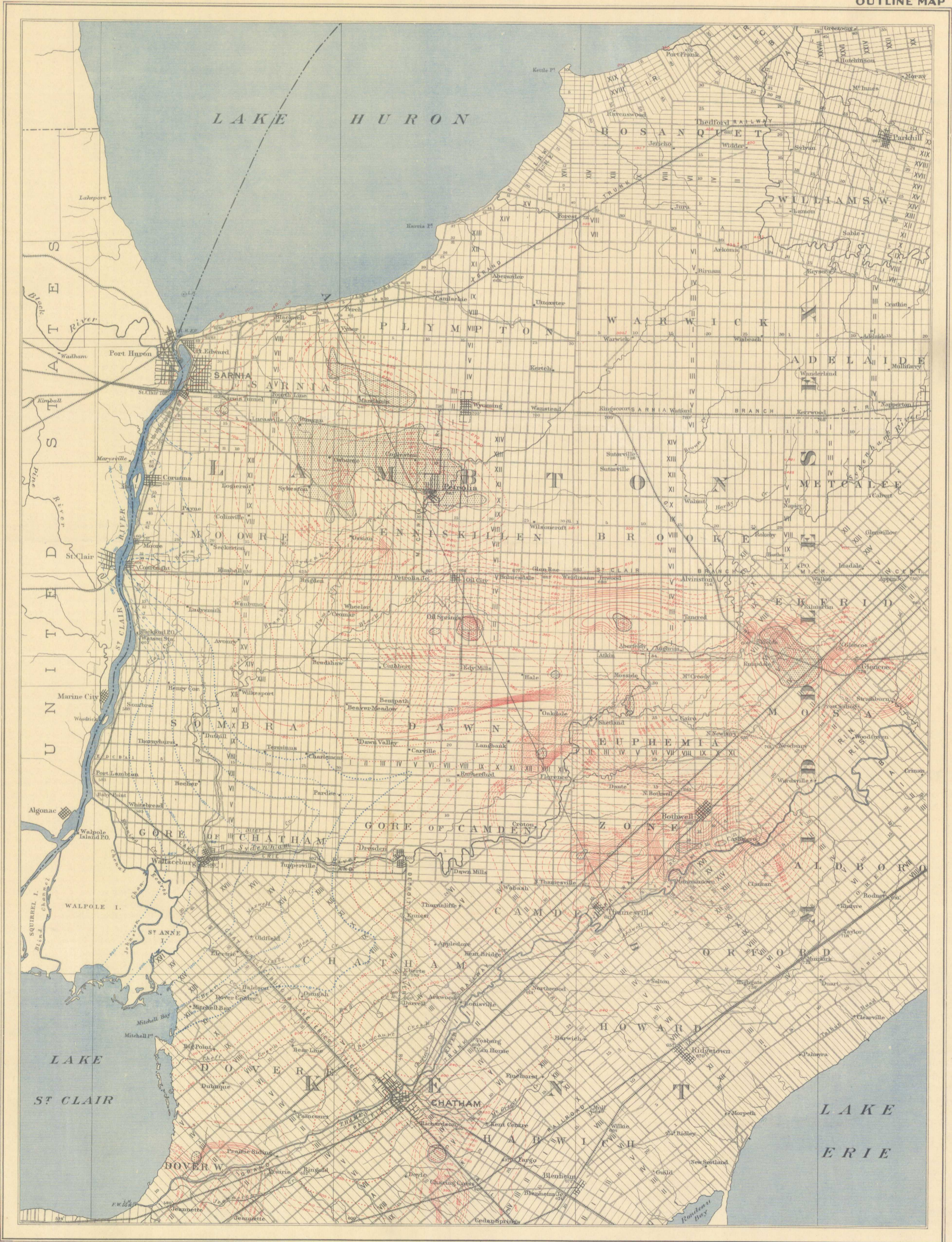
HON. MARTIN BURRELL, MINISTER; R.G.M. CONNELL, DEPUTY MINISTER.

GEOLOGICAL SURVEY  
WILLIAM McFINNES, DIRECTING GEOLOGIST

Issued 1919



OUTLINE MAP

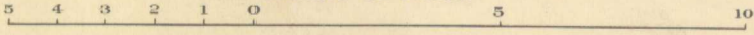


G.O. Senecal, Geographer and Chief Draughtsman  
A.S. Jost, Draughtsman

Publication No 1750  
Based map from an engraved plate  
of the Department of the Interior.

THE GEOLOGICAL STRUCTURE OF THE OIL REGIONS OF LAMBTON COUNTY  
AND ADJACENT PORTIONS OF MIDDLESEX AND KENT COUNTIES, ONTARIO.

Scale of Miles



To accompany Part E. Summary Report by N.Y. Williams, 1918.

NOT TO BE TAKEN FROM LIBRARY  
NE PAS SORTIR DE LA BIBLIOTHÈQUE



G  
3401  
.C5.  
1856  
G4  
ommc  
1750