

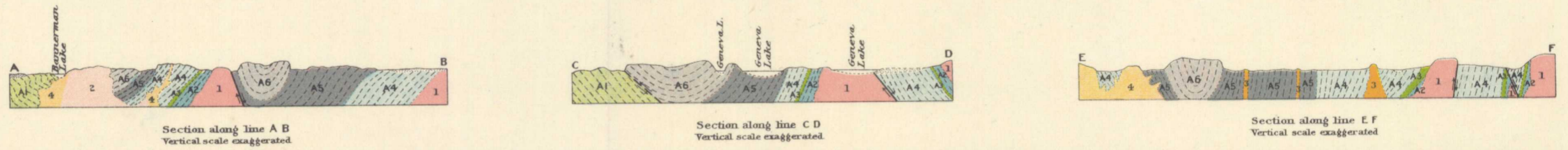
Sheet No 20

Canada Department of Mines

HON. SIR JAMES A. LOUGHEED, MINISTER; CHARLES CAMSELL, DEPUTY MINISTER.

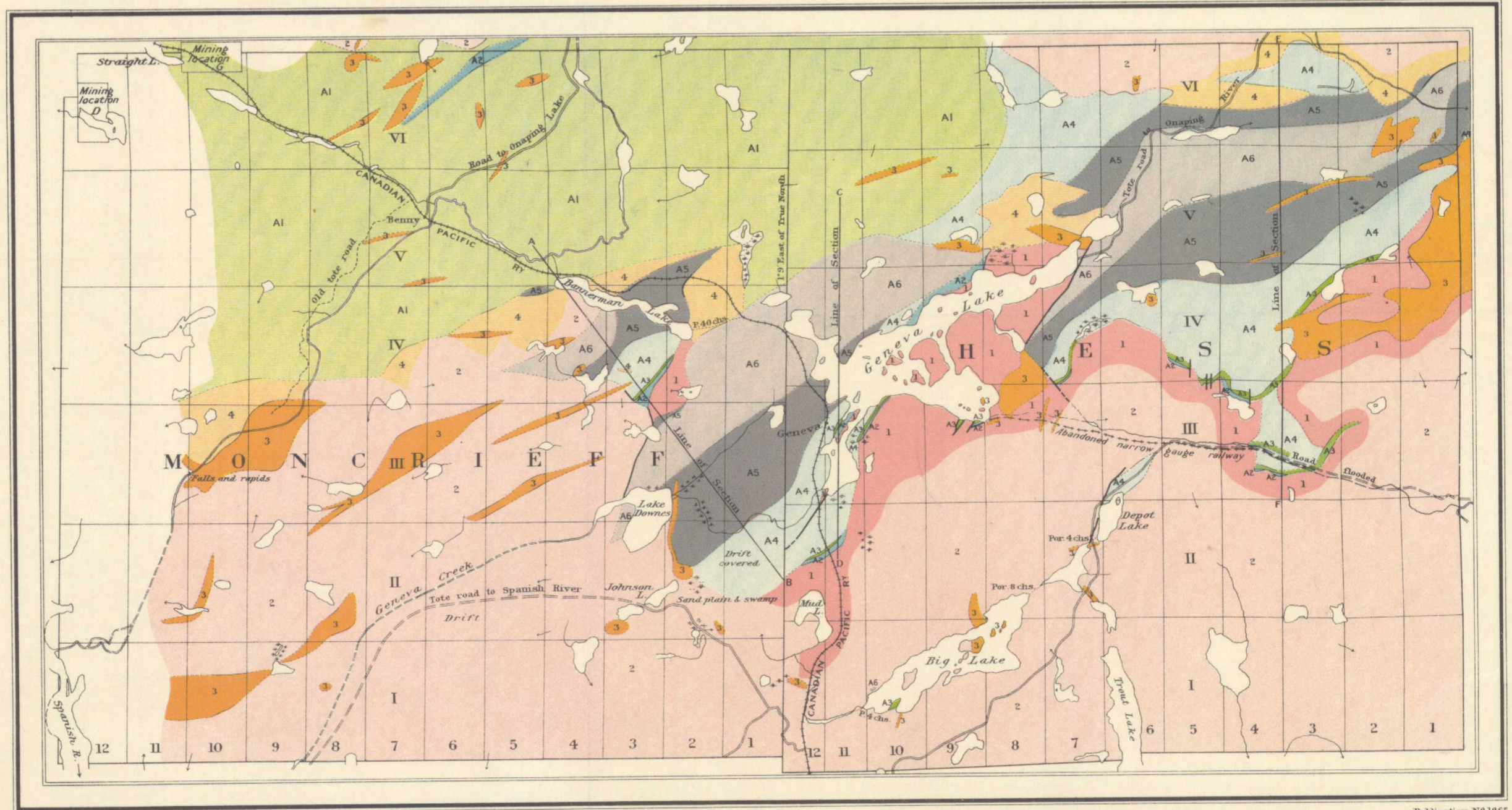
GEOLOGICAL SURVEY W. H. COLLINS, DIRECTOR.

Issued 1921



LEGEND

- | | | |
|------------------------|----|--|
| HURONIAN | 4 | Syenite porphyry intrusives |
| | 3 | Basic intrusives |
| | A6 | Lorrain quartzite |
| | A5 | Gowganda formation |
| | A4 | Serpent formation |
| | A3 | Espanola formation |
| BRUCE SERIES | A2 | Mississagi formation |
| | 2 | Undifferentiated mixture of Pre-Huronian granite and gneiss and Keweenawian syenite porphyry |
| BATHOLITHIC INTRUSIVES | 1 | Granite and gneiss |
| | A1 | Volcanic and contemporaneous sedimentary rocks |
| PRE-HURONIAN | | |
| KEEWATIN | | |
- Symbols**
- Geological boundary (defined)
 - Geological boundary (assumed)
 - Fault



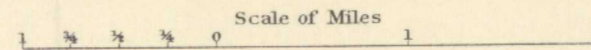
C. O. Sénécal, Geographer and Chief Draughtsman.
A. M. Gregor, Draughtsman.

Publication No 1865

Moncrieff and Hess Townships.
Sudbury district.

MONCRIEFF AND HESS TOWNSHIPS, SUDBURY DISTRICT, ONTARIO

To accompany Report by T. T. Quirke,
in Summary Report, Part D., 1920.



NOT TO BE KEPT FROM LIBRARY
NE PAS SOUS DE BIBLIOTHÈQUE

5-1-7
A, Geol.

1865

This map has been produced from a scanned version of the original map
Reproduction par numérisation d'une carte sur papier