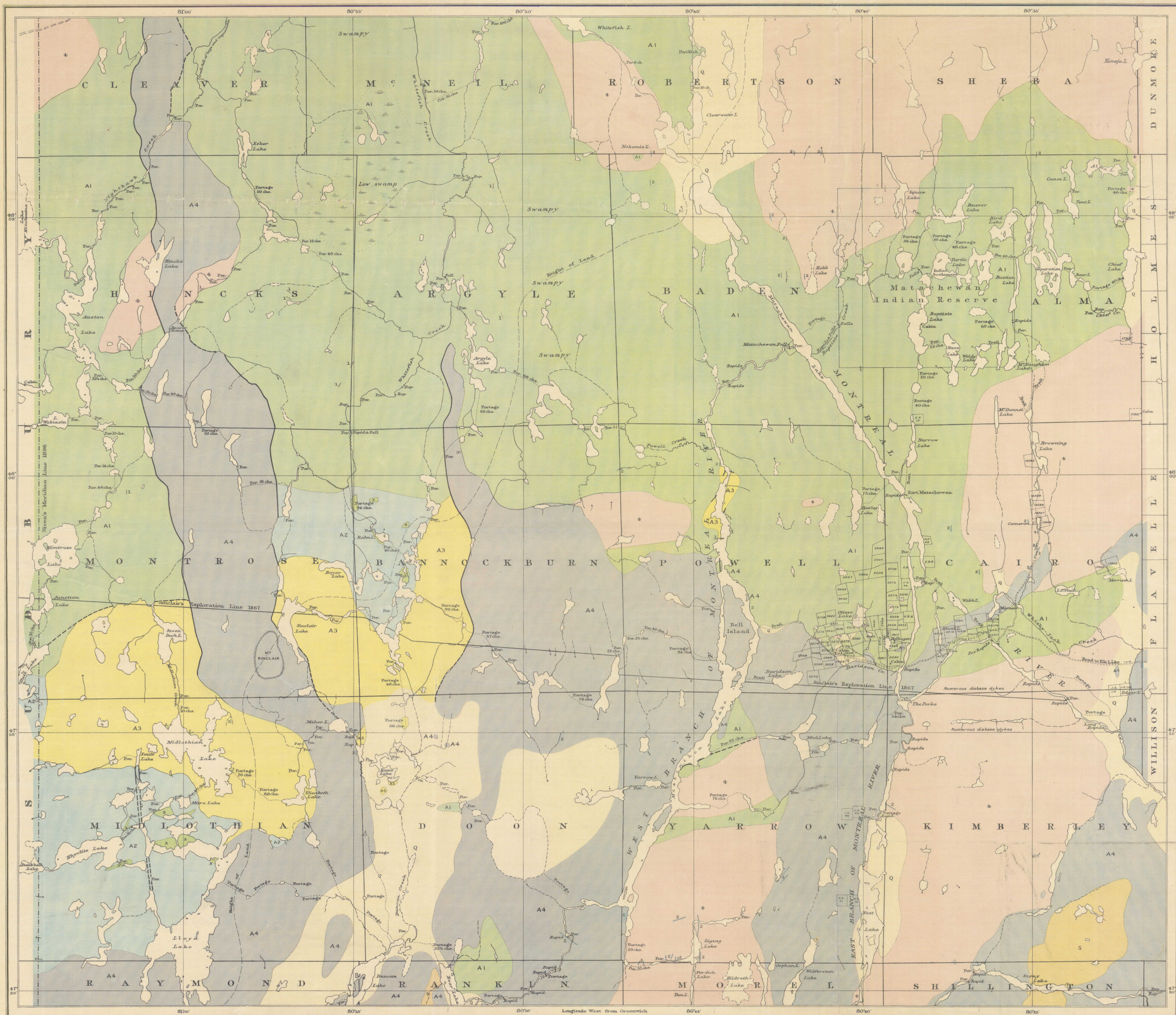


Issued 1920



**LEGEND**

QUATERNARY	RECENT AND GLACIAL	Q	Fluvial, lacustrine and glacial deposits. These deposits are widely distributed, but only in the larger areas are separately colored.
KEWEENAWAN		5	Nipissing Diabase
HURONIAN		A4	Cobalt Series, Georgian formation
		*	Granite and syenite
		A3	Kiasuk series
PRE-CAMBRIAN		3	Peridotite and serpentine
KEEWATIN		A2	Rhyolite and rhyolite tuffs
		A1	Andesite, basalt and their tuffs
		2	Diabase dykes
		1	Granite dykes
		Symbols	
			Geological boundary
			Fault

Geological, topographic and Chief Draughtsman.  
 A. Readhead, Draughtsman.

Publication No. 1793

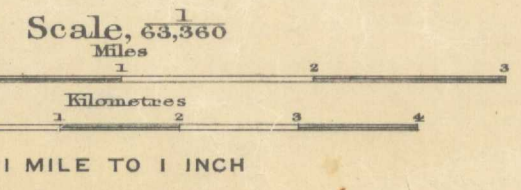
Matachewan (Timiskaming Dist.)

5.1.7  
 A. Geol.

GSC Map 1793



**MATACHEWAN**  
 TIMISKAMING DISTRICT  
 ONTARIO



NOT TO BE TAKEN FROM LIBRARY  
 Sources of Information:  
 Geology from official maps and publications of the Department of Lands, Forests and Mines and from surveys by the Geological Survey of Canada, 1871-1888.  
 Topography by H.C. Cook, 1871-1888, supplemented by information from published maps of the Geological Survey and the Bureau of Mines.  
 Map compilation by A. Readhead.