

LEGEND

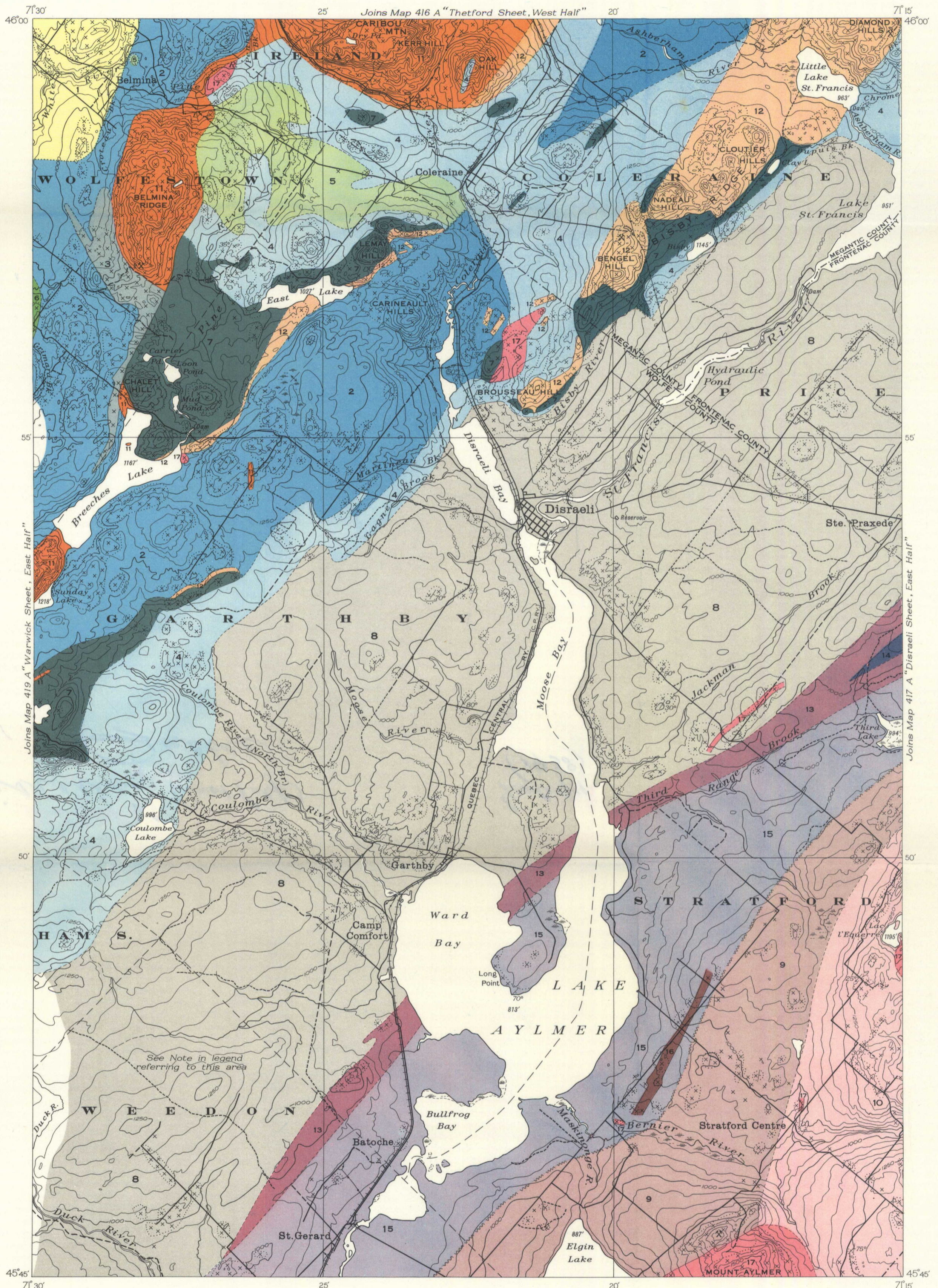
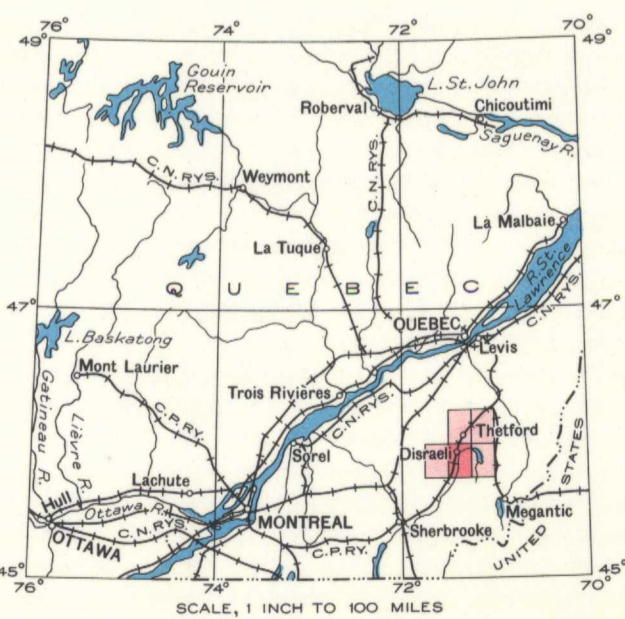
- DEVONIAN**
 LOWER OR MIDDLE DEVONIAN
- 17 Granite and other acid intrusives
- LOWER DEVONIAN**
 LAKE AYLMER SERIES
- 16 Rhyolite
 - 15 Calcareous shale; some conglomerate and limestone
 - 14 Shale and sandstone (within conglomerate 13)
 - 13 Conglomerate
- ORDOVICIAN OR SILURIAN**
- 12 Pyroxenite, pyroxene-rich peridotite, and derived serpentine
 - 11 Olivine-rich peridotite with derived serpentine and soapstone
- ORDOVICIAN**
- 10 ST. FRANCIS SERIES
Quartzite, greywacke; some slate and calcareous beds
 - 9 Lava, flow breccia, tuff
- BEAUCEVILLE SERIES**
- 8 Slate, quartzite, conglomerate
 - 7 Gabbro
- CAMBRIAN (?)**
 CALDWELL SERIES
- 6 Red slate
 - 5 Grey and green slate; some quartzite
 - 4 Basalt, andesite, trachyte, red and grey chert, tuff, agglomerate
 - 3 Chlorite schist
 - 2 Quartzite; some interbedded slate
 - 1 Sericite schist; some chlorite schist, slate and quartzite
- BENNETT SCHIST**

NOTE: In the drift and forest covered area between Disraeli bay and Duck river, part of the area mapped as Beauceville Series (8) is probably underlain by Caldwell slate (5)

- Area of observed rock outcrop; and small observed rock outcrop
- Geological boundary (defined, approximate, assumed)
- Bedding (inclined, vertical)
- Fault (approximate)
- Anticlinal axis (approximate)
- Road well travelled
- Road not well travelled
- Trail
- Bridge
- Transmission line (not along road)
- Pit or quarry
- Prospect
- County boundary
- Township boundary
- Marsh
- Contours (interval 50 feet)
- Height in feet above Mean sea-level

SOURCES OF INFORMATION

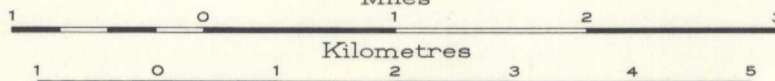
Compiled and reproduced by the Bureau of Geology and Topography from information supplied by Federal Government Departments. Geology by H. C. Cooke, 1933, and 1935; and by T. H. Clark, 1935.



MAP 418 A
DISRAELI SHEET
 (WEST HALF)

WOLFE, MEGANTIC, AND FRONTENAC COUNTIES, QUEBEC

Scale, 63,360 or 1 Inch to 1 Mile



Approximate magnetic declination, 18°30' West.

NOT TO BE TAKEN FROM LIBRARY
 NE PAS SORTIR DE LA BIBLIOTHÈQUE



418A