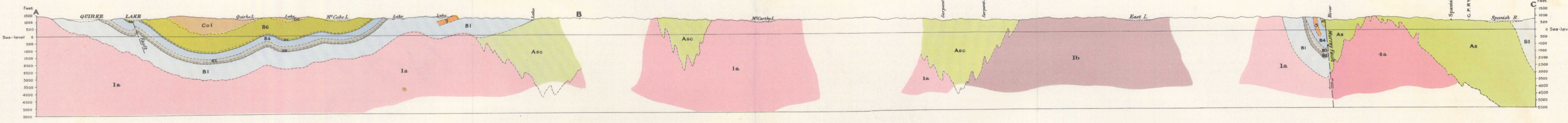
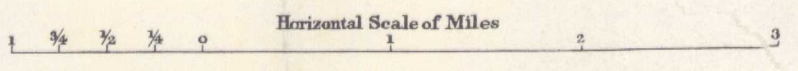


Issued 1925  
 Reprinted 1955

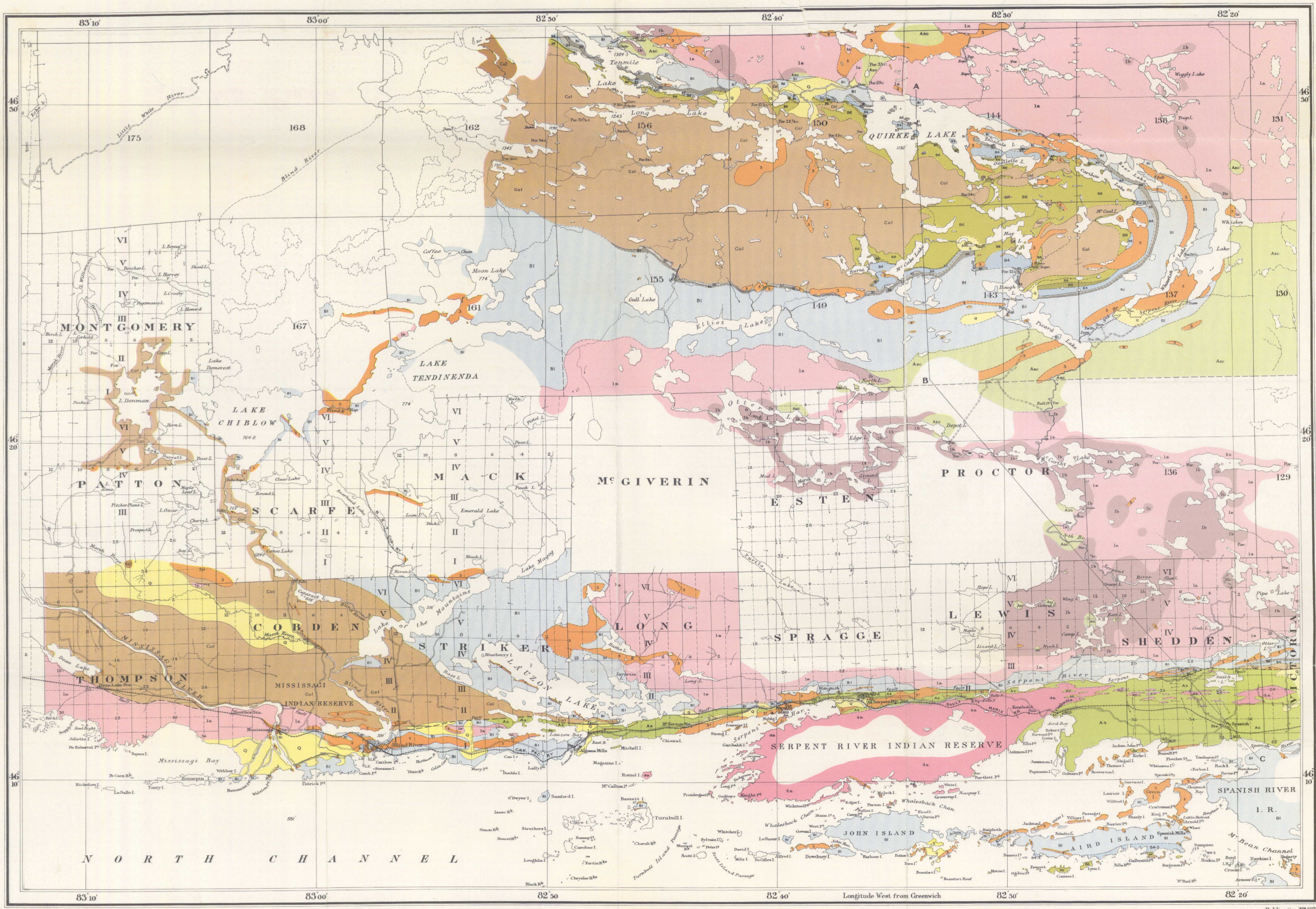


Structural Section along line A-B-C

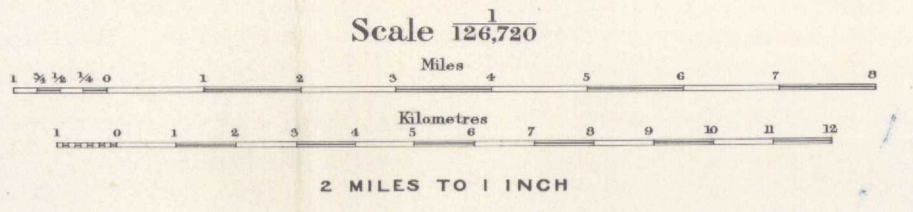


**LEGEND**

- QUATERNARY**
- PLEISTOCENE**
- Q Superficial deposits (loess, lake clay, sand and gravel, and glacial drift)
- KEWEENAW**
- 4a Batholithic intrusives (granite and gneiss)
- 3 Basic intrusives (sills and dykes of quartz-diorites and related dioritic rocks including a few dykes of much younger olivine diabase)
- COBALT SERIES**
- Co2 Lorrain quartzite (white quartzite and quartz conglomerate)
- Co1 Gowganda formation (local conglomerate, greywacke, banded greywacke, quartzite and siliceous limestone)
- B6 Serpent quartzite (white talciferous quartzite)
- B5 Espanola limestone (dolomitic limestone interbedded with silt)
- BRUCE SERIES**
- B4 Espanola greywacke (calcareous thin bedded silt)
- B3 Bruce limestone (dolomitic limestone interbedded with silt)
- B2 Bruce conglomerate (boulder conglomerate)
- B1 Mississagi quartzite (felsitic quartzite with some carbon conglomerate and argillite)
- PRE-HURONIAN**
- 1b Transition material (granite gneiss carrying 25% or more of older rocks in irregular and partly associated forms)
- 1a Batholithic intrusives (granite gneiss)
- As Sediments (interbedded quartzite and greywacke more or less changed to mass schists)
- Asc Schist complex (schistose and recrystallized volcanic and igneous formations)
- Symbols**
- Geological boundary (dotted)
- Geological boundary (dashed)
- Roads
- Elevations (in feet above sea-level)



**BLIND RIVER**  
**ALGOMA DISTRICT**  
**ONTARIO**



**SOURCES OF INFORMATION**  
 Geology and surveys by—  
 W. H. Collins, 1914-1916.  
 P. Eskola, 1922.  
 Surveys by—  
 Department of Naval Service.  
 Department of Lands, Forests and Mines, Ontario.  
 Department of Indian Affairs.  
 Geological Survey, Department of Mines.  
 Canadian Pacific Railway.  
 Map compilation by—  
 R. B. Yorton.

**NOT TO BE TAKEN FROM LIBRARY**  
**NE PAS SORTIR DE LA BIBLIOTHÈQUE**

1970